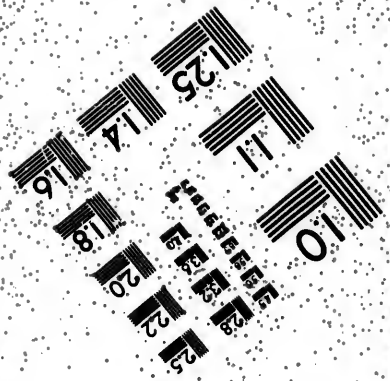
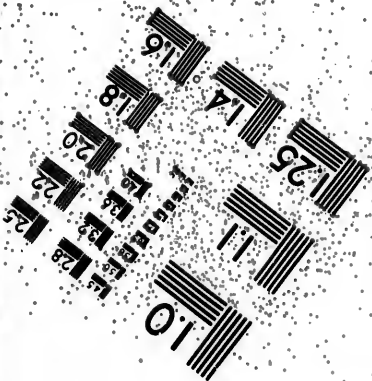
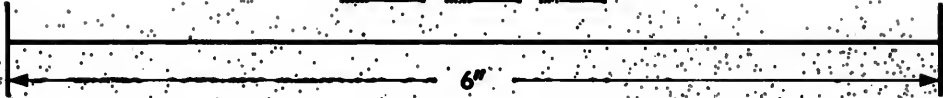
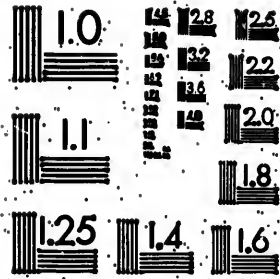


IMAGE EVALUATION
TEST TARGET (MT-3)



Photographic
Sciences
Corporation

23 WEST MAIN STREET
WEBSTER, N.Y. 14580
(716) 872-4503

18
20
22
25

**CIHM/ICMH
Microfiche
Series.**

**CIHM/ICMH
Collection de
microfiches.**



Canadian Institute for Historical Microreproductions / Institut canadien de microreproductions historiques

17
01

© 1982

Technical and Bibliographic Notes/Notes techniques et bibliographiques

The Institute has attempted to obtain the best original copy available for filming. Features of this copy which may be bibliographically unique, which may alter any of the images in the reproduction, or which may significantly change the usual method of filming, are checked below.

L'institut a microfilmé le meilleur exemplaire qu'il lui a été possible de se procurer. Les détails de cet exemplaire qui sont peut-être uniques du point de vue bibliographique, qui peuvent modifier une image reproduite, ou qui peuvent exiger une modification dans la méthode normale de filmage sont indiqués ci-dessous.

- Coloured covers/
Couverture de couleur
- Covers damaged/
Couverture endommagée
- Covers restored and/or laminated/
Couverture restaurée et/ou pelliculée
- Cover title missing/
Le titre de couverture manque
- Coloured maps/
Cartes géographiques en couleur
- Coloured ink (i.e. other than blue or black)/
Encre de couleur (i.e. autre que bleue ou noire)
- Coloured plates and/or illustrations/
Planches et/ou illustrations en couleur
- Bound with other material/
Relié avec d'autres documents
- Tight binding may cause shadows or distortion along interior margin/
La reliure serrée peut causer de l'ombre ou de la distortion le long de la marge intérieure
- Blank leaves added during restoration may appear within the text. Whenever possible, these have been omitted from filming/
Il se peut que certaines pages blanches ajoutées lors d'une restauration apparaissent dans le texte, mais, lorsque cela était possible, ces pages n'ont pas été filmées.
- Additional comments/
Commentaires supplémentaires:

- Coloured pages/
Pages de couleur
- Pages damaged/
Pages endommagées
- Pages restored and/or laminated/
Pages restaurées et/ou pelliculées
- Pages discoloured, stained or foxed/
Pages décolorées, tachetées ou piquées
- Pages detached/
Pages détachées
- Showthrough/
Transparence
- Quality of print varies/
Qualité inégale de l'impression
- Includes supplementary material/
Comprend du matériel supplémentaire
- Only edition available/
Seule édition disponible
- Pages wholly or partially obscured by errata slips, tissues, etc., have been refilmed to ensure the best possible image/
Les pages totalement ou partiellement obscurcies par un feuillet d'errata, une pelure, etc., ont été filmées à nouveau de façon à obtenir la meilleure image possible.

This item is filmed at the reduction ratio checked below/
Ce document est filmé au taux de réduction indiqué ci-dessous.

10X	12X	14X	16X	18X	20X	22X	24X	26X	28X	30X	32X
				✓							

The copy filmed here has been reproduced thanks to the generosity of:

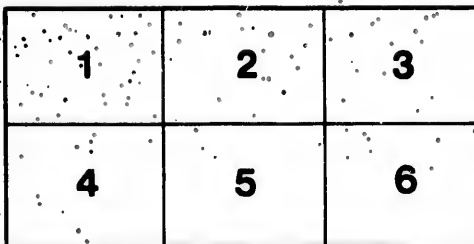
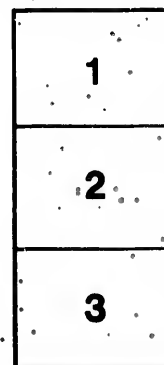
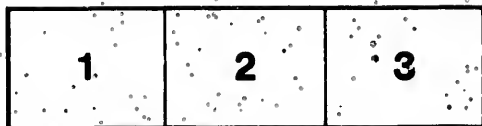
Library of the Public
Archives of Canada

The images appearing here are the best quality possible considering the condition and legibility of the original copy and in keeping with the filming contract specifications.

Original copies in printed paper covers are filmed beginning with the front cover and ending on the last page with a printed or illustrated impression, or the back cover when appropriate. All other original copies are filmed beginning on the first page with a printed or illustrated impression, and ending on the last page with a printed or illustrated impression.

The last recorded frame on each microfiche shall contain the symbol \rightarrow (meaning "CONTINUED"), or the symbol ∇ (meaning "END"), whichever applies.

Maps, plates, charts, etc., may be filmed at different reduction ratios. Those too large to be entirely included in one exposure are filmed beginning in the upper-left hand corner, left to right and top to bottom, as many frames as required. The following diagrams illustrate the method:



L'exemplaire filmé fut reproduit grâce à la générosité de:

La bibliothèque des Archives
publiques du Canada

Les images suivantes ont été reproduites avec le plus grand soin, compte tenu de la condition et de la netteté de l'exemplaire filmé, et en conformité avec les conditions du contrat de filmage.

Les exemplaires originaux dont la couverture en papier est imprimée sont filmés en commençant par le premier plat et en terminant soit par la dernière page qui comporte une empreinte d'impression ou d'illustration, soit par le second plat, selon le cas. Tous les autres exemplaires originaux sont filmés en commençant par la première page qui comporte une empreinte d'impression ou d'illustration et en terminant par la dernière page qui comporte une telle empreinte.

Un des symboles suivants apparaîtra sur la dernière image de chaque microfiche, selon le cas; le symbole \rightarrow signifie "A SUIVRE", le symbole ∇ signifie "FIN".

Les cartes, planches, tableaux, etc., peuvent être filmés à des taux de réduction différents. Lorsque le document est trop grand pour être reproduit en un seul cliché, il est filmé à partir de l'angle supérieur gauche, de gauche à droite, et de haut en bas, en prenant le nombre d'images nécessaire. Les diagrammes suivants illustrent la méthode.

[REDACTED]

2st

DE

CONT

THE NEWFOUNDLAND
ALMANAC,

FOR THE YEAR OF OUR LORD

1875,

[BEING THE LATTER PART OF THE THIRTY-EIGHTH AND THE
BEGINNING OF THE THIRTY-NINTH YEAR OF THE
REIGN OF HER MAJESTY, QUEEN VICTORIA,]

CONTAINING

*Astronomical, Statistical, Commercial, Local and
General Information,*

DERIVED FROM THE MOST AUTHENTIC SOURCES:

ALSO,

A Post Office Directory for Newfoundland,

CONTAINING AN ALPHABETICAL LIST OF THE TOWNS, VILLAGES
AND SETTLEMENTS IN THE COLONY, WITH THE
POST TOWNS AND WAY OFFICES.

PUBLISHED BY JOHN WOODS,

SOLD BY T. MCCONNAN, AND M. FENELON.

ST. JOHN'S, NEWFOUNDLAND:

MDCCCLXXV.

PRINTED AT THE COURIER OFFICE.

St. John's Carriage Factory.

FURLONG BRO'S.

No. 21, Corner of Cochrane and Duckworth Streets.

ST. JOHN'S, NEWFOUNDLAND.

THE Subscribers beg leave to inform the inhabitants of St. John's and the Outports, that they have commenced business in the above line, and are now prepared to manufacture

ALL KINDS OF

Carriages, Sleighs, Carts, &c., &c.

And hope by strict attention to business and superior workmanship, to merit a share of public patronage.

☞ Outport Orders promptly attended to.

No. 123

WATER STREET,

No. 125

JOHN McMILLAN,

WHOLESALE and RETAIL DEALER

—IN—

GROCERIES,

PROVISIONS

—AND—

FURNITURE.

SHIPS' STORES OF ALL KINDS SUPPLIED.

actory.

h Streets.

itants of St.
enced busi-
manufacture

c., &c.

for work-
ge.

led to.

No. 125

ALDER

NS

PLIED.

THE NEWFOUNDLAND

ALMANAC,

FOR THE YEAR OF OUR LORD

1875,

[BEING THE LATTER PART OF THE THIRTY-EIGHTH AND THE
BEGINNING OF THE THIRTY-NINTH YEAR OF THE
REIGN OF HER MAJESTY, QUEEN VICTORIA,]

CONTAINING

Astronomical, Statistical, Commercial, Local and
General Information,

DERIVED FROM THE MOST AUTHENTIC SOURCES:

ALSO,

A Post Office Directory for Newfoundland,

CONTAINING AN ALPHABETICAL LIST OF THE TOWNS, VILLAGES
AND SETTLEMENTS IN THE COLONY, WITH THE
POST TOWNS AND WAY OFFICES.

PUBLISHED BY JOHN WOODS,

Sold by T. McGONNAN, 201 Water Street, St. John's, Newfoundland.

ST. JOHN'S, NEWFOUNDLAND:

MDCCLXXV.

PRINTED AT THE COURIER OFFICE.

RAPE
AX
430
N49N4
1875

Contents.

Advertisements	29
Board of Works Department	29
Boards of Road Commissioners (Outports).	67
Board of Health and Health Wardens	67
Banks—Savings' Bank	79
Union Bank of Newfoundland	79
Commercial Bank of Newfoundland	63
Barristers and Attorneys, Supreme Court	68
Barristers and Attorneys, Northern District	68
Calendar Pages—Moon's Phases, Sun's Rising and Setting at St. John's every day in the year, Sun's Declina- tion, Equation of Time, High Water at St. John's every morning and afternoon, Moon's Rising, Me- moranda, Meteorological Table, Tide Table, Weather Table, &c., &c.	9—28
Census—abstract 1869	5
Colonial Secretary's Office	27
Court Houses and Keepers	35
Commissioners for erection of Public Wharves	35
Commissioners for erection of Breakwaters	35
Court of Civil and Criminal Jurisdiction for Labrador	64
Commissioners of Wrecked Property	63
Commissioners of Pilots	63
Commissioners of Affidavits, &c., in S. and C. Courts	64
Colonial and Continental Church Society	69
Chamber of Commerce, (St. John's)	78
Difference of time at various places on the Globe as com- pared with St. John's	8
Departmental Officers of the Government	27
District Surgeons	35
Eclipses for the year 1875	6
Executive Council	26
Educational Institutions, Protestant and Roman Catholic Education Boards, &c.	68
Ecclesiastical Department, &c., &c.	73
Fixed and Moveable Festivals, Anniversaries, &c.	8

Financial Secretary's Office	27
Foreign Consuls	79
Governor, Commander-in-Chief, and Vice-Admiral of Newfoundland	26
Guols and Guolers	34
Her Majesty's Chief Officers of State	25
House of Assembly	27
Inspectors of Weights and Measures	66
Judicial Department, comprising lists of Barristers, and Attorneys of Supreme Court, Stipendiary Magistrates, Justices of the Peace, &c., &c.	63
Legislative Council	26
Light Houses and Lights	36
Medical Officers for Sick Seamen (Port of St. John's)	68
Masonic Lodges	81
Medical Society of St. John's	82
Newfoundland Wesleyan Academy	68
Naval Establishment	79
Notaries Public	68
Newspapers Published in the Colony	80
Newfoundland Tariff	82
Planetary Notices—Solar System	6
Post Office Department, including Postal Routes, Rates of Postage, and Post Office Directory for New'ld.	41
Police	66
Queen's Printer	68
Royal Family of England	24
Revenue Establishment, &c., &c.	27
Surveyor General's Department	28
Superintendent of Mercantile Marine.	28
St. John's Hospital	35
St. John's Poor House	35
St. John's Lunatic Asylum	35
Stipendiary Magistrates	55
St. John's Academy	68
St. John's Athenaeum	80
St. John's and Newfoundland Bible Society	78
St. Joseph's Catholic Institute	80
Treasury Department	28
Vice-Admiralty Court	64
Wesleyan School and Agency Society	70
Wesleyan Academic Literary Institute	80

Abstract from Newfoundland Census of 1869.

Names of Districts.	Population, '69.		Population, '57.		Religious Denominations, 1869.						
	17204	17352	3654	11247	Church of England.	Church of Rome.	Wesleyan Church.	Mirk of Scotland.	Free Mirk.	Congrega-tional.	Baptist.
St. John's, East	17204	17352	3654	11247			1696	176	282	23*	
St. John's, West	11646	15124	2980	8760			534	115	92	63	
Harbor Main (Conception Bay)	654?	5385	1442	4982			118		8	5	
Port-de-Grave ditto	7536	6489	3224	1910			2397	2			
Harbor Grace ditto	12740	10067	6822	4153			1588	6	171		
Carbonear ditto	5633	5233	895	2368			2367			3	
Bay-de-Verds ditto	7057	6221	469	1731			4857				
Trinity Bay	13817	10736	7428	1384			4985	6	10	4	
Bonavista Bay	11560	8850	7029	2420			2094	7	1	9	
Twillingate and Fogo	13067	9717	646	1961			4235	11	3	11	
Ferryland	6991	5228	172	5817			1			1	
Placentia and St. Mary's†	8794	8334	1171	7390			219	11			
Burin	6731	5529	191	9546			2789	1	3	1	
Fortune Bay	5233	3933	3935	1290			6				
Burgeo and LaPoile	5119	3545	4123	112			843	1		5	
Electoral Districts.....	138670	119304	50685	58101			28639	336	573	338	10
French Shore	5987	3334	2638	2456			186		37		
Labrador	2479	1650	1803	483			165		28		
Total.....	146536	124288	55184	61050			28990	401	573	333	20

*A large emigration, and houses at West end destroyed by fire, some years since, not rebuilt, is the principal cause of decrease in the population of St. John's.

It will be seen that the falling off of the population is much greater in the Western than in the Eastern Division.

†A large migration has taken place, chiefly to Fortune Bay, from Placentia and St. Mary's.

Eclipses, 1876.

In the year 1876 there will be *Two Eclipses*—both of the Sun.

First—A total Eclipse of the Sun, April 5, 1876, invisible at Greenwich.

This Eclipse begins on the Earth generally, April 5, 15h. 38m. 2s., Mean Time at Greenwich, in longitude $35^{\circ}.14'$ E. of Greenwich, and latitude $33^{\circ}.4'$ S. Ends on the Earth generally, April 5, 21h. 16m. 2s., in longitude $134^{\circ}.16'$ E. of Greenwich, and latitude $23^{\circ}.27'$ N.

This Eclipse being visible *only* E. of Greenwich, will consequently be invisible in this Hemisphere.

Second—An annular Eclipse of the Sun, September 28-29, 1876, visible (as a *partial Eclipse*) at Greenwich.

This Eclipse begins on the Earth generally, September 28, 22h. 1m. 6s., Mean Time at Greenwich, in longitude $60^{\circ}.56'$ W. of Greenwich, and latitude $38^{\circ}.9'$ N. Ends on the Earth generally, September 29, 3h. 54m. 1s., in longitude $29^{\circ}.55'$ E. of Greenwich, and latitude $20^{\circ}.14'$ S.

This Eclipse, which begins at sunrise on September 28, in the Western Hemisphere, will first be visible from Panama, along the Eastern coast of the North American continent, $8^{\circ}.14'$ W. of Newfoundland to the North Pole. In the Eastern Hemisphere the Eclipse first begins at sunset, and will be visible from Crozet's Islands in the Southern Pacific, about 30° S. of Cape St. Mary, in the Island of Madagascar, to the entrance of the Persian Gulf, E. of the Peninsula of Arabia.

Planetary Notices.

The Planets of the Solar System are 29 in number. Of them 11 are *primary* and 18 *secondary* or Moons. Of these Moons, our Earth has one. *Jupiter* four, *Saturn* seven, and *Uranus* six. Of the primary planets, two are called *inferior*, viz., *Mercury* and *Venus*, because they are nearer the Sun than the earth: and

othe
Ear

D
Mer
Ven
Ear
Mar
Jup
Sat
Ura

T
the
The
year
Side
355
8h.
of t
over
ann

T
L
V
ann

N
der
add
the
St.
exa
har
it w
hou
Sho

others are called *superior* because further from the *Sun* than the *Earth*.

<i>Distance from the Sun.</i>	<i>Magnitude—diameters in miles.</i>	<i>Length of year.</i>
Mercury, 37 millions of miles	3,130	3 months
Venus, 68 millions of miles	7,700	7½ do
Earth, 95 millions of miles	7,912	1 year
Mars, 142 millions of miles	4,200	2 do
Jupiter, 485 millions of miles	89,000	12 do
Saturn, 890 millions of miles	79,600	29 do
Uranus, 1800 millions of miles	35,000	84 do

The *Solar year* is the time which the sun takes in passing over the twelve signs of the *Zodiac*, which is 365 days, 5h. 48m. 48s. The *Civil year* is 365 days 6 hours, or rather 365 days for three years in succession, and every fourth year 366 days. The *Sidereal year* is 365 days, 6h. 6m. 18-5s. The *Anomalistic year* is 355 days, 6h. 14m. The *Lunar astronomical year* is 354 days, 8h. 48-6m. or 12 lunations. The *Anomalistic year* is an advance of the orbit as part of the solar system in space, and its excess over the *Sidereal* or *Tropical year*, is the stellar measure of the annual advance of the whole system.

St. John's.

True Latitude of Church Hill 47° .34' North.

Longitude (West of Greenwich) 52° .42' West.

Variation of the Compass, 32° .30' and increasing *seven seconds* annually.

NOTE.—The Tide Tables (in the Calendar pages) may be rendered applicable to various other places on the coast, by simply adding or subtracting as the case may be, the difference between the times of High Water on the Full and Change of the Moon at St. John's, and the time of the full tide at any other harbor; for example, to find the time of High Water at any of the principal harbors of Conception Bay, add 45 minutes to the time at which it will be High Water at St. John's; for Placentia Bay, add 2 hours; for St. Peter's, 1h. 50m.; for Ferrolle, on the French Shore, 4 hours, &c.—See table LVII of Norie's Epitome.

Calendar.

Golden Number	14	Dominical Letter	C
Epact	23	Roman Indiction	3
Solar Cycle	8	Julian Period	6588

Fixed and Moveable Festivals, Anniversaries, &c.

Epiphany	Jan. 6	Ascension Day	May 6
Septuagesima Sunday	24	Pentecost—Whit Sunday	16
Quinquagesima—Sh. S. Feb.	7	Trinity Sunday	23
Ash Wednesday	10	Birth of Queen Victoria	24
First Sunday in Lent	14	Corpus Christi	27
St. David.	March 1	Accession of Q. Vic.	June 20
St. Patrick.	17	Proclamation	21
Palm Sunday	21	St. John Bapt.—Mid'r. Day	24
Annunciation—Lady Day	25	St. Michael	Sept. 29
Good Friday.	26	Birth Prince of Wales Nov.	9
Easter Sunday	28	First Sunday in Advent	28
Low Sunday	April 4	St. Andrew	30
St. George	23	St. Thomas	Dec. 21
Rogation Sunday	May 2	Christmas Day	25

The Year 5636 of the Jewish Era commences on September 30, 1875.

Ramadán (Month of Abstinence observed by the Turks) commences on October 1, 1875.

The Year 1292 of the Mohammedan Era commences on February 7, 1875.

A Table

Shewing the difference of Time at various places on the Globe, as compared with St. John's, Newfoundland.

When it is Noon at St. John's, it is

	18 minutes past 11 o'clock, A.M., at Charlottetown, P. E. I.
West Longitude.	17 do 11 do Halifax.
	13 do 11 do St. John, N.B.
	50 do 10 do Portland, Me.
	47 do 10 do Boston, Mass.
	46 do 10 do Quebec.
	34 do 10 do New York.
	30 do 10 do Philadelphia.
	23 do 10 do Washington.
	21 do 7 do San Francisco, Califor.
	14 do 7 do St. Juan, Vancouvers I.
East Long.	30 do 3 P.M. Greenwich.
	20 do 4 do Rome.
	26 do 5 do Constantinople.
	52 do 5 do Jerusalem.
	50 do 8 do Madras, E. I.
	8 do 11 do Canton.

JANUARY, 1875.

MOON'S PHASES,

Calculated for Mean Time at St. John's, Newfoundland.

NEW MOON	7th day,	1h, 38m, Evening.
FIRST QUARTER	14th day,	5h, 52m, Evening.
FULL MOON	21st day,	2h, 10m, Evening.
LAST QUARTER	29th day,	9h, 3m, Morning.

Day of W.	Day of M.	Sun		G. app. time.		High			Memoranda, &c., &c.
		rises	sets	Sun's Declination.	Equa of time.	Water at St. John's.			
						at St. John's.			
		h. m.	h. m.	° ' "	m. s. p.	m. a. m.			
F	1	7 55	4 13	S 23 1	3 45	3 15	3 0	Circumcision.	
S	2	7 54	4 14	22 56	4 13	4 22	4 0		
Su.	3	7 54	4 15	22 50	4 41	3 20	4 46	Fort Royal, Jamaica, burnt, 1763.	
M	4	7 54	4 16	22 44	5 8	6 9	5 35		
T	5	7 54	4 17	22 38	5 36	7 5	6 41		
W	6	7 54	4 19	22 31	6 2	8 0	7 36	Epiphany.	
Th.	7	7 53	4 20	22 23	6 29	6 25	7 21	St. Duff's Day.	
F	8	7 53	4 21	22 15	6 54	7 53	7 21	Bat. New Orleans, '15	
S	9	7 53	4 22	22 7	7 20	9 3	8 39	R. C. Cathedral op'd., 1850.	
Su.	10	7 52	4 24	21 58	7 44	9 46	9 22		
M	11	7 52	4 25	21 49	8 9	10 30	10 6	10—Penny postage, Great Britain, '40.	
T	12	7 51	4 26	21 40	8 32	11 15	10 51		
W	13	7 51	4 27	21 30	8 55	12 1	11 37		
Th	14	7 50	4 29	21 19	9 17	1 7	12 43	R. Bruce died, 1611.	
F	15	7 50	4 30	21 8	9 39	2 0	1 36	James Watt b., 1736	
S	16	7 49	4 31	20 57	9 59	3 5	2 31	Bat. of Corunna, '09.	
Su.	17	7 48	4 33	20 45	10 20	3 56	3 32	B. Franklin b., 1706.	
M	18	7 47	4 34	20 33	10 9	5 3	4 39		
T	19	7 46	4 36	20 21	10 58	7 4	6 40	D. Webster b., 1782.	
W	20	7 45	4 37	20 8	11 16	8 43	8 19		
Th.	21	7 44	4 38	19 55	11 33	9 47	9 23		
F	22	7 44	4 40	19 42	11 49	10 33	10 9	Byron born, 1732.	
S	23	7 43	4 42	19 28	12 5	12 9	11 45	Wm. Pitt died, 1806.	
Su.	24	7 42	4 43	19 13	12 19	1 3	0 36	Fox born, 1739.	
M	25	7 41	4 45	18 59	12 34	1 29	1 5	Conversion St. Paul.	
T	26	7 40	4 46	18 44	12 47	2 8	1 44	Dr. Jenner died, 1823	
W	27	7 38	4 48	18 29	12 59	2 58	2 34	Mozart died, 1756.	
Th.	28	7 37	4 49	18 13	13 11	2 55	3 33	Colonial Building opened, 1850.	
F	29	7 36	4 51	17 57	13 22	3 38	3 14		
S	30	7 35	4 52	17 41	13 22	5 0	4 36	24—Septuagesima	
Su.	31	7 33	4 54	S 17 24	13 41	5 34	5 19	Sunday.	

Mists.—A white mist in the evening over a meadow with a river, will be drawn up by the sun next morning, and the day will be bright. Five or six fogs successively drawn up, portend rain. Where the mist which hangs over low lands, draws towards high hills in the morning, and rolls up to the top, it

C
3
6588
riess, &c.
May 6
nday . 16
23
oria . 24
27
June 20
21
r. Day 24
Sept. 29
les Nov. 9
vent . 28
30
Dec. 21
25
September
Turks) com-
nces on Feb-
Globe, as com-
town, P. E. I.
N.B.
Me.
Mass.
k.
phia.
ton.
cisco, Califor.
Vancouver's I.
ch.
inople.
m.
E. I.

FEBRUARY, 1875.

MOON'S PHASES,

Calculated for Mean Time at St. John's, Newfoundland.

NEW MOON	6th day,	4h, 24m, Morning.
FIRST QUARTER	13th day,	1h, 50m, Morning.
FULL MOON	20th day,	4h, 31m, Morning.
LAST QUARTER	28th day,	6h, 21m, Morning.

Day of W.	Day of M.	Sun		G. app. time.		High		Memoranda, &c., &c.
		rises	sets	Sun's Declination.	Equa of time.	Water at St John's.		
		at St. John's.						
		h. m.	h. m.	° ' "	m. s.	p. m.	a. m.	
M	1	7 32	4 55	S 17 7	13 50	6 25	6 1	
T	2	7 31	4 57	16 50	13 57	7 28	7 4	Candlemas Day.
W	3	7 29	4 59	16 32	14 4	8 48	8 24	1st Ses. 10th General Assembly opened, '70
T	4	7 28	5 0	16 15	14 10	10 4	9 40	Sir R Peel born, 1788
F	5	7 27	5 2	15 57	14 15	7 20	7 4	Fish Convention laid before L. J. 1857.
S	6	7 25	5 3	15 38	14 20	8 8	7 44	Mary Queen of Scots beheaded, 1587.
Sr.	7	7 24	5 5	15 20	14 23	8 41	8 17	Queen Victoria married, 1840.
M	8	7 22	5 7	15 1	14 26	9 2	8 58	Ash Wednesday.
T	9	7 20	5 8	14 42	14 28	10 3	9 59	St. Valentines day.
W	10	7 19	5 10	14 22	14 29	10 46	10 22	1st Sun. in Lent.
T	11	7 17	5 11	14 3	14 30	11 36	11 12	Dr. Kane died, 1857.
F	12	7 16	5 12	13 43	14 29	0 37	12 13	Benevolent Irish Society founded, 1806.
S	13	7 14	5 13	13 23	14 28	1 44	1 20	7 — Quinquagesima, Shrove Sunday.
Sr.	14	7 13	5 15	13 2	14 26	3 19	2 55	Washington b., 1732
M	15	7 11	5 16	12 42	14 23	4 48	4 24	St. Matthias.
T	16	7 9	5 18	12 21	14 20	5 58	5 34	
W	17	7 7	5 19	12 0	14 16	6 54	6 30	
T	18	7 6	5 21	11 39	14 11	7 54	7 30	
F	19	7 4	5 22	11 18	14 5	9 9	8 45	
S	20	7 3	5 24	10 57	13 59	10 16	9 52	
Sr.	21	7 2	5 25	10 35	13 52	11 13	10 49	
M	22	7 0	5 26	10 13	13 44	11 45	11 21	
T	23	6 59	5 27	9 51	13 36	0 36	12 12	
W	24	6 57	5 29	9 29	13 27	1 25	1 1	
Th.	25	6 55	5 30	9 7	13 18	2 5	1 41	
F	26	6 52	5 32	8 45	13 8	2 37	2 13	
S	27	6 51	5 34	8 22	12 58	2 55	2 31	Longfellow b., 1807.
Sr.	28	6 49	5 35	S 8 0	12 46	4 0	3 56	

will be fair: but if the mist hangs upon the hills, and drags along the woods, there will be rain.

Clouds.—Against much rain the clouds increase very fast, especially before thunder. When they are formed like fleeces, but dense in the middle, and bright towards the edge, with the sky bright, they are signs of a frost, with hail, snow or rain.—

MARCH, 1875.

MOON'S PHASES,

Calculated for Mean Time at St. John's, Newfoundland.

NEW MOON	7th day,	4h, 50m, Evening.
FIRST QUARTER	14th day,	9h, 35m, Morning.
FULL MOON	21st day,	8h, 21m, Evening.
LAST QUARTER	29th day,	0h, 54m, Evening.

Day of W.	Day of M.	Sun		G. app. time.		High		Memoranda, &c., &c.
		rises at St. John's.	sets at St. John's.	Sun's Declination.	Equi. of time.	Water at St. John's.		
		h. m.	h. m.	° ' m. s.	p. m.	a. m.		
M	1	6 46	5 39	S 7 57 12 35	5 17	4 53		St. David.
T	2	6 41	5 41	7 14 12 23	6 2	5 38		J. Wesley died, 1791.
W	3	6 42	5 42	6 51 12 10	6 50	6 34		
Th.	4	6 40	5 44	6 28 11 57	8 13	7 49		
F	5	6 38	5 45	6 5 11 44	9 25	9 1		
S	6	6 36	5 47	5 42 11 30	10 35	10 11		
Sa.	7	6 34	5 48	5 18 11 16	...	6 35		
M	8	6 32	5 50	4 55 11 1	8 12	7 48		William III d., 1702.
T	9	6 30	5 51	4 32 10 46	8 55	8 31		
W	10	6 28	5 53	4 8 10 31	9 31	9 7		Prince Wales mar-
Th.	11	6 26	5 54	3 45 10 15	10 25	10 1		ried, 1863.
F	12	6 24	5 56	3 21 9 59	11 18	10 54		
S	13	6 22	5 57	2 57 9 43	12 23	11 59		
Sa.	14	6 20	5 58	2 34 9 26	1 52	1 28		
M	15	6 18	5 59	2 10 9 9	3 11	2 47		Cæsar assassinated
T	16	6 16	6 1	1 46 8 52	4 41	4 17		B.C., 41.
W	17	6 14	6 3	1 23 8 34	5 44	5 20		St. Patrick's Day.
Th.	18	6 12	6 4	0 59 8 16	6 31	6 10		
F	19	6 10	6 6	0 35 7 59	7 20	6 46		
S	20	6 8	6 7	S 0 12 7 41	8 19	7 55		Sir Isaac Newton d.,
Sa.	21	6 6	6 8	N 0 11 7 22	9 16	8 52		1726.
M	22	6 4	6 10	0 35 7 4	9 46	9 22		21—Palm Sunday.
T	23	6 2	6 11	0 58 6 46	11 10	10 46		
W	24	6 0	6 13	1 22 6 27	11 48	11 24		
Th.	25	5 58	6 14	1 46 6 9	12 18	11 54		Lady Day.
F	26	5 56	6 16	2 9 5 59	1 31	1 10		Good Friday.
S	27	6 54	6 17	2 33 5 32	2 18	1 54		
Sa.	28	5 52	6 18	2 56 5 13	2 45	2 29		Raphael born, 1843.
M	29	5 50	6 20	3 20 4 55	3 27	3 3		Easter Sunday.
T	30	5 48	6 21	3 43 4 37	4 40	4 16		Treaty of peace with
W	31	5 46	6 23	N 4 6 4 18	5 39	5 15		Russia, 1856.

If they form high in the air, in thin white trains, like locks of wool, they portend wind and probably rain. When a general cloudiness covers the sky and small black fragments of clouds fly underneath, they are a sure sign of rain, and probably will be lasting. Two currents of clouds always portend rain, and in summer, thunder.

APRIL, 1875.

MOON'S PHASES.

Calculated for Mean Time at St. John's, Newfoundland.

NEW MOON 6th day, 3h, 5m, Morning.
 FIRST QUARTER 12th day, 6h, 3m, Evening.
 FULL MOON 20th day, 1h, 6m, Evening.
 LAST QUARTER 28th day, 3h, 47m, Evening.

Day of W.	Day of M.	Sun		G. app. time.		High		Memoranda, &c., &c.
		rises	sets	Sun's Declination.	Equa of time. subtr.	Water at St. John's.		
		h. m.	h. m.	° /	m. s	p. m. a. m.		
Th.	1	5 44	6 24	N 4 29	4 0	6 28	6 4	
F	2	5 42	6 25	4 52	3 42	7 28	7 4	
S	3	5 40	6 27	5 15	3 24	8 36	8 12	
Su.	4	5 38	6 28	5 38	3 6	9 48	9 24	Low Sunday.
M	5	5 36	6 30	6 1	2 49	...	6 38	
T	6	5 34	6 31	6 24	2 31	7 50	7 26	Goldsmith born, 1774
W	7	5 32	6 32	6 47	2 14	8 30	8 6	Wordsworth b., 1770
Th.	8	5 31	6 33	7 9	1 57	9 32	9 8	
F	9	5 28	6 35	7 32	1 40	10 31	10 7	
S	10	5 26	6 36	7 54	1 24	11 9	10 45	Lord Bacon d., 1620.
Su.	11	5 24	6 38	8 16	1 7	12 17	11 53	
M	12	5 22	6 39	8 38	0 51	1 41	1 17	
T	13	5 20	6 41	9 0	0 36	2 43	2 19	Catholic Emancipation, 1829.
W	14	5 18	6 42	9 21	0 20	4 16	3 52	Franklin died, 1790.
Th.	15	5 16	6 44	9 43	0 5	4 59	4 35	Bat. of Culloden, 1746
F	16	5 15	6 45	10 4	0 9	6 4	5 40	Shakespeare b., 1564.
S	17	5 13	6 46	10 26	0 23	6 42	6 18	Byron died, 1824.
Su.	18	5 11	6 48	10 47	0 37	7 24	7 0	—Lincoln assassinated, 1865.
M	19	5 9	6 49	11 7	0 51	8 19	7 55	St. George.
T	20	5 7	6 50	11 28	1 4	9 16	8 52	Cromwell b., 1599.
W	21	5 5	6 52	11 49	1 17	10 18	9 54	St. Mark.
T	22	5 4	6 53	12 9	1 30	11 20	10 56	Plague of London, 1655.
F	23	5 2	6 54	12 29	1 42	12 21	11 38	Joan of Arc enters Orleans, 1429.
S	24	5 0	6 56	12 49	1 53	1 5	12 45	
Su.	25	4 58	6 57	13 8	2 4	2 0	1 36	
M	26	4 56	6 59	13 28	2 15	2 37	2 13	
T	27	4 55	7 0	13 47	2 25	3 6	2 42	
W	28	4 53	7 2	14 6	2 34	4 10	3 46	
Th.	29	4 51	7 3	14 25	2 43	5 27	5 3	
F	30	4 50	7 4	N 14 44	2 51	5 58	5 34	

Equation of time to be subtracted from apparent time to the 15th, and to be added the remainder of the month.

Dew.—If the dew lies plentifully on the grass after a fair day, it is a sign of another. If not, and there is no wind, rain must follow. A red evening portends fine weather; but if it

MAY, 1875.

MOON'S PHASES.

Calculated for Mean Time at St. John's, Newfoundland.

NEW MOON 5th day, 11h, 33m, Morning.
 FIRST QUARTER 12th day, 4h, 6m, Morning.
 FULL MOON 20th day, 5h, 20m, Morning.
 LAST QUARTER 28th day, 2h, 0m, Morning.

Day of W.	Day of M.	Sun		G. app. time.		High		Memoranda, &c., &c.
		rises	sets	Sun's Decl.	Equa of time.	Water at St. John's.		
		at St. John's.	at St. John's.	in north.	in subt.	p. m. a. m.		
S	1	4 48	7 6	N 15 2	2 59	6 43	6 19	S. S. Philip & James
Su.	2	4 47	7 7	15 20	3 7	7 47	7 23	Rogation Sunday.
M	3	4 45	7 8	15 38	3 13	9 1	8 37	Govr. Inverling sworn
T	4	4 43	7 10	15 55	3 20	10 19	9 55	into office, 1855.
W	5	4 42	7 11	16 13	3 25	6 58	4	Abdication of Na-
Th.	6	4 40	7 12	16 30	3 30	8 10	7 46	poleon I, 1814.
F	7	4 39	7 11	16 46	3 35	9 5	8 41	5—Napoleon I died
S	8	4 38	7 15	17 3	3 39	10 2	9 38	at St. Helena, 1821
Su.	9	4 36	7 16	17 19	3 42	11 0	10 30	6—Peace proclaim'd
M	10	4 35	7 18	17 35	3 45	12 11	11 36	between the allied
T	11	4 35	7 19	17 51	3 47	1 54	1 30	powers & Russia,
W	12	4 32	7 20	18 6	3 49	2 16	1 52	1856. Ascension
Th.	13	4 31	7 21	18 21	3 50	3 29	3 5	Day, Holy Thurs.
F	14	4 29	7 23	18 36	3 51	4 33	4 9	11—Massacre at
S	15	4 28	7 24	18 50	3 51	5 21	4 57	Delhi, 1857.
Su.	16	4 27	7 25	19 4	3 50	6 3	5 59	Pentecost—Whit S.
M	17	4 26	7 27	19 18	3 49	6 42	6 18	12—General Election
T	18	4 24	7 28	19 31	3 48	7 27	7 3	under new Constitu-
W	19	4 23	7 29	19 44	3 46	8 37	8 13	tion, 1855.
Th.	20	4 22	7 30	19 57	3 43	9 37	9 13	Foundation st. Catholic
F	21	4 21	7 31	20 9	3 40	10 46	10 22	Cathedral laid, 1846
S	22	4 20	7 32	20 21	3 36	11 32	11 8	
Su.	23	4 19	7 33	20 33	3 32	12 48	12 24	Trinity Sunday.
M	24	4 18	7 34	20 44	3 27	1 31	1 7	Birth of Queen Vic-
T	25	4 17	7 35	20 55	3 21	2 15	1 57	toria.
W	26	4 16	7 36	21 6	3 15	2 53	2 19	
Th.	27	4 15	7 38	21 16	3 9	3 26	3 2	Corpus Christi.
F	28	4 14	7 40	21 26	3 2	4 41	4 17	13—Pius IX b., 1792
S	29	4 13	7 41	21 36	2 55	5 23	4 59	1st Leg. Gen. As-
Su.	30	4 13	7 41	21 45	2 47	6 11	5 47	sembly opened. Ri-
M	31	4 12	7 42	N 21 54	2 39	7 6	6 42	ots in Water-st. '61.

spread too far upward from the horizon in the evening, and especially morning, it foretells wind or rain, or both. When the sky, in rainy weather, is tinged with sea green, the rain will increase; if deep blue, it will be showery.

HEAVENLY BODIES.—If there be a haziness in the air which

JUNE, 1875.

MOON'S PHASES,

Calculated for Mean Time at St. John's, Newfoundland.

NEW MOON 3rd day, 6h, 50m, Evening.
 FIRST QUARTER 10th day, 4h, 25m, Evening.
 FULL MOON 18th day, 8h, 25m, Evening.
 LAST QUARTER 26th day, 10h, 9m, Morning.

Day of W.	Day of M.	Sun rises at St. John's.		Sun sets		G. app. time.		High Water at St. John's.		Memoranda, &c., &c.
		h. m.	h. m.	h. m.	h. m.	Sun's Declination.	Equa. of time. subt.	p. m.	a. m.	
T	1	4 12	7 43	N 22 2	2 30	8 9	7 45			
W	2	4 12	7 44	22 10	2 21	9 52	9 28			
Th.	3	4 11	7 45	22 18	2 11	.. .	7 26			George III b., 1738.
F	4	4 10	7 45	22 25	2 1	8 14	7 50			Battle of Magenta, 1859.
S	5	4 10	7 46	22 32	1 51	8 47	8 23			
Su.	6	4 10	7 47	22 38	1 40	9 51	9 27			
M	7	4 9	7 48	22 45	1 29	10 45	10 21			
T	8	4 9	7 48	22 50	1 18	11 37	11 13			
W	9	4 9	7 49	22 55	1 7	12 34	12 10			Great Fire, 1846,—
Th.	10	4 8	7 50	23 0	0 55	1 36	1 12			Gov'or. Bannerman sworn into office.
F	11	4 8	7 51	23 5	0 43	2 22	1 58			
S	12	4 8	7 51	23 9	0 31	3 28	3 4			
Su.	13	4 7	7 52	23 13	0 19	4 30	4 6			Magna Charta signed, 1215.
M	14	4 7	7 52	23 16	0 6	5 21	4 57			
T	15	4 6	7 53	23 19	0 5	6 8	5 44			
W	16	4 6	7 53	23 21	0 18	6 51	6 27			
Th.	17	4 6	7 54	23 23	0 31	7 50	7 26			John Wesley b., 1703
F	18	4 5	7 54	23 25	0 43	9 4	8 40			Battle of Waterloo, 1815.
S	19	4 6	7 55	23 26	0 56	10 18	9 54			
Su.	20	4 7	7 55	23 27	1 9	11 32	11 8			Accession of Queen Victoria.
M	21	4 7	7 55	23 27	1 22	12 15	11 51			
T	22	4 8	7 56	23 27	1 35	1 6	12 42			—Proclamation Q.
W	23	4 8	7 56	23 26	1 48	2 1	1 37			Victoria, 1837.
Th.	24	4 9	7 56	23 26	2 1	2 33	2 9			St. John Baptist—
F	25	4 9	7 56	23 24	2 14	3 0	2 36			Midsummer Day.
S	26	4 10	7 56	23 23	2 26	3 47	3 23			29—9th Gen. Assembly
Su.	27	4 10	7 56	23 20	2 39	4 50	4 26			of Nfld. dissolved, 1869.
M	28	4 10	7 56	23 18	2 51	5 46	5 22			
T	29	4 11	7 56	23 15	3 3	6 42	6 18			St. Michael—Michel-
W	30	4 11	7 56	N 23 12	3 15	8 4	7 40			mas Day.

Equation of time to be subtracted from apparent time to the 14th, and to be added the remainder of the month.

fades the sun's light, and makes the orb appear whitish, or ill defined; or at night, if the moon and stars grow dim, and a ring encircles the former, rain will follow. If the sun's rays

JULY, 1875.

MOON'S PHASES,

Calculated for Mean Time at St. John's, Newfoundland.

NEW MOON 3rd day, 1h, 34m, Morning.
 FIRST QUARTER 10th day, 7h, 10m, Morning.
 FULL MOON 18th day, 9h, 56m, Morning.
 LAST QUARTER 25th day, 5h, 9m, Evening.

Day of W.	Day of M.	Sun rises at St. John's.	Sun sets at St. John's.	G. app. time.		High Water at St. John's		Memoranda, &c., &c.
				Sun's Declination.	Equa. of time. add.	p. m.	a. m.	
		h. m.	h. m.	° /	m. s.	p. m.	a. m.	
Th.	1	4 12	7 55	N 23	8 3 27	9 38	9 14	Sir R. Peel died, 1850
F	2	4 13	7 55	23	4 3 39	. . .	6 40	Dominion Canada
S	3	4 13	7 54	22 59	3 50	7 52	7 28	inaugurated, 1867.
Su.	4	4 14	7 54	22 54	4 1	8 45	8 21	American Independence, 1776.
M	5	4 15	7 54	22 49	4 12	9 33	9 9	5—Princess Helena
T	6	4 15	7 53	22 43	4 23	10 19	9 55	married, 1866.
Th	7	4 16	7 53	22 37	4 33	11 2	10 38	7—Free Trade Act
Th	8	4 17	7 53	22 30	4 42	11 45	11 21	passed, 1855.
F	9	4 18	7 52	22 23	4 51	12 35	12 11	<i>Cape Ray and Cape</i>
S	10	4 19	7 51	22 16	5 0	1 11	12 47	<i>Breton electric cable</i>
Su.	11	4 19	7 51	22 8	5 9	2 21	1 57	<i>laid, 1856.</i>
M	12	4 21	7 50	22 0	5 17	3 36	3 12	Havelocks victory at
T	13	4 21	7 50	21 52	5 24	4 38	4 14	Falchpore, 1857.
W	14	4 22	7 49	21 43	5 31	5 37	5 13	St. Swithen's day.
Th	15	4 23	7 48	21 34	5 37	6 28	6 4	
F	16	4 24	7 47	21 24	5 43	7 22	6 58	
S	17	4 25	7 46	21 14	5 49	8 33	8 9	Havelock re-takes
Su.	18	4 26	7 45	21 4	5 54	9 50	9 26	Cawnpore, 1857.
M	19	4 27	7 44	20 53	5 58	11 3	10 37	<i>Governor Hill, C.B.,</i>
T	20	4 28	7 43	20 42	6 2	11 42	11 18	<i>arrived in Nfld., '69</i>
W	21	4 29	7 42	20 31	6 5	12 40	12 16	
Th.	22	4 30	7 41	20 19	6 8	1 45	1 21	
F	23	4 32	7 40	20 7	6 10	2 15	1 51	<i>Prince of Wales ar-</i>
S	24	4 33	7 39	19 55	6 12	2 42	2 18	<i>rived at St. John's,</i>
Su.	25	4 34	7 38	19 42	6 13	3 14	2 50	1860.
M	26	4 35	7 37	19 29	6 14	4 42	4 18	
T	27	4 36	7 36	19 16	6 13	5 23	4 59	<i>Second Atlantic Cable</i>
W	28	4 37	7 35	19 2	6 13	6 32	6 8	<i>laid, 1866.</i>
Th.	29	4 38	7 34	18 48	6 12	7 56	7 32	French Revolution.
F	30	4 39	7 32	18 34	6 10	9 28	9 4	1830.
S	31	4 41	7 31	N 18 19	6 7	. . .	6 52	I. Loyola died, 1556.

appear like Moses' horns, if white at setting, or shorn of its rays, or goes down into a bank of cloud in the horizon, bad weather is to be expected. If the moon looks pale and dim, we expect rain; if red, wind; and if of a natural colour, with a clear sky, fair weather. If the moon is rainy throughout, it

AUGUST, 1875.

MOON'S PHASES,

Calculated for Mean Time at St. John's, Newfoundland.

NEW MOON	2nd day, 9h, 57m, Morning.
FIRST QUARTER	8th day, 0h, 0m, Evening.
FULL MOON	16th day, 10h, 3m, Morning.
LAST QUARTER	23rd day, 10h, 8m, Morning.

Day of W.	Day of M.	Sun		Sun's		Elev. of	High	Water at	Memoranda. Sec., &c.
		rises	sets	Declination.	Time.				
		at St. John's.	at St. John's.	at St. John's.	at St. John's.	at St. John's.	at St. John's.	at St. John's.	
		h. m.	h. m.	° ' "	° ' "	m. s. p.	m. s. p.	m. s. p.	
Sc.	1	4 42	7 29	N 18 4	6 4	7 40	7 16		Slavery abolished in
M	2	4 44	7 28	17 49	6 1	8 21	8 0		British Dominions,
T	3	4 45	7 27	17 34	5 57	9 6	8 42		1834.
W	4	4 46	7 25	17 18	5 52	9 43	9 19		1st Atlantic Telegraph
Th.	5	4 48	7 24	17 2	5 46	10 22	9 58		Cable laid, 1856.
F	6	4 49	7 22	16 45	5 4	11 0	10 36		Duke of Edinburgh
S	7	4 50	7 21	16 29	5 34	11 45	11 21		born, 1844.
Su.	8	4 51	7 19	16 12	5 26	0 35	12 11		Canuing, died, 1827.
M	9	4 53	7 18	15 55	5 18	1 18	12 54		Prince Henry of the
T	10	4 54	7 16	15 37	5 10	2 38	2 14		Netherlands arrived
W	11	4 55	7 15	15 20	5 1	3 59	3 35		at St. John's, 1845.
Th.	12	4 57	7 13	15 2	4 51	5 7	4 43		14—Printing invent-
F	13	4 58	7 11	14 44	4 41	6 5	5 41		ed, 1437.
S	14	4 59	7 9	14 25	4 39	6 57	6 33		
Sc.	15	5 1	7 8	14 7	4 19	8 2	7 38		Gas first used in Lon-
M	16	5 2	7 6	13 48	4 7	9 23	8 59		don, 1807.
T	17	5 3	7 4	13 29	3 55	10 19	9 55		
W	18	5 5	7 3	13 10	3 42	11 23	10 59		
Th.	19	5 6	7 1	12 50	3 29	0 24	11 38		
F	20	5 7	6 59	12 30	3 15	1 9	11 45		Canada discov., 1508
S	21	5 9	6 57	12 11	3 0	1 53	1 19		Foundation stone Wes-
Su.	22	5 10	6 55	11 51	2 46	2 31	2 7		teyan Church laid,
M	23	5 11	6 54	11 30	2 30	3 9	2 45		1856.
T	24	5 13	6 52	11 10	2 15	4 18	3 54		St. Bartholomew's
W	25	5 14	6 50	10 49	1 59	5 31	5 7		Day.
Th	26	5 15	6 48	10 29	1 42	6 39	6 6		Birth of Prince Con-
F	27	5 17	6 46	10 8	1 26	7 59	7 35		sort, 1819.
S	28	5 18	6 44	9 46	1 9	9 0	8 36		
Sc.	29	5 19	6 42	9 25	0 51	10 13	9 49		St. John Baptist be-
M	30	5 21	6 40	9 4	0 33	11 11	10 36		headed.
T	31	5 22	6 38	N 8 12	0 15	8 8	7 44		J. Burvan died, 1638

will clear at the change, and perhaps the rain return a few days after. If fair throughout, and rain at the change, the fair weather will probably return on the fourth or fifth day. If at night the stars appear unusually numerous, and there be little or no wind, easterly wind and rain, or snow generally soon follow.

SEPTEMBER, 1875.

MOON'S PHASES,

Calculated for Mean Time at St. John's, Newfoundland.

FIRST QUARTER	7th day,	6h, 7m, Evening.
FULL MOON	15th day,	9h, 11m, Morning.
LAST QUARTER	22nd day,	3h, 30m, Morning.
NEW MOON	30th day,	8h, 11m, Morning.

Day of W.	Day of M.	Sun		G. app. time.		High Water at St. John's.	Memoranda, &c., &c.
		rises at St. John's.	sets at St. John's.	Sun's Declination.	Equa of time. sub't.		
		h. m.	h. m.	° ' "	m. s.	p. m. a. m.	
W	1	5 23	6 36	N 8 21	0 2	8 33 8 4	
Th.	2	5 25	6 35	7 59	0 21	9 9 8 45	Atlantic Cable of 1865 groggled and secured, 1867.
F	3	5 26	6 33	7 37	0 40	9 43 9 19	
S	4	5 27	6 31	7 15	1 0	10 35 10 11	
Su.	5	5 29	6 28	6 52	1 19	11 4 10 40	
M	6	5 30	6 26	6 30	1 39	11 51 11 27	
T	7	5 1	6 24	6 8	1 59	0 52 12 28	
W	8	5 33	6 23	5 45	2 20	1 46 1 22	Great Eastern arrived at Hearts Content with 1865 Cable, 1867.
Th.	9	5 34	6 21	5 23	2 40	3 19 2 55	
F	10	5 35	6 18	5 0	3 1	4 38 4 14	
S	11	5 37	6 16	4 37	3 22	5 39 5 15	
Su.	12	5 3	6 14	4 14	3 43	6 31 6 7	9—Catholic Cathedral consecrated, 1855.
M	13	5 39	6 12	3 51	4 4	7 20 6 56	11—First Exhibition held in Newfd., '72.
T	14	5 41	6 10	3 28	4 25	8 24 8 0	Moscow burned, 1812
W	15	5 42	6 8	3 5	4 46	9 28 9 4	
Th.	16	5 43	6 6	2 42	5 7	10 38 10 14	
F	17	5 44	6 4	2 19	5 28	0 9 11 55	
S	18	5 45	6 2	1 56	5 50	0 30 12 6	
Su.	19	5 46	6 0	1 32	6 11	1 38 1 14	
M	20	5 47	5 58	1 9	6 32	2 28 2 4	
T	21	5 49	5 56	0 46	6 53	3 2 2 38	Protestant Cathedral consecrated, 1850.—
W	22	5 51	5 54	N 0 22	7 14	4 18 3 54	
T	23	5 52	5 53	S 0 0	7 35	4 25 4 1	22—1st ses. 11th Gen. Assembly dis., 1874.
F	24	5 54	5 50	0 24	7 56	6 19 5 55	Pacific Ocean dis- covered, 1513.
S	25	5 56	5 48	0 47	8 16	7 15 6 51	Strasbourg falls, '70
Su.	26	5 57	5 46	1 10	8 37	8 2 7 38	
M	27	5 58	5 44	1 31	8 57	9 22 8 58	
T	28	6 0	5 42	1 57	9 17	10 21 9 57	
W	29	6 1	5 40	2 21	9 37	.. . 6 59	St. Michael.
Th.	30	6 2	5 38	S 2 44	9 56	7 47 7 23	

WIND.—If the wind veers about, much rain is pretty sure. If in changing it follows the course of the Sun, it brings fair weather, the contrary, foul. Whistling or howling of the wind, a sure sign of rain.

THE MILKY WAY.—That irregular stream of faint, cloudy light, which may be seen on clear, moonless nights by the naked

OCTOBER, 1875.

MOON'S PHASES,

Calculated for Mean Time at St. John's, Newfoundland.

FIRST QUARTER	7th day,	0h, 35m,	Evening.
FULL MOON	14th day,	7h, 44m,	Evening.
LAST QUARTER	22nd day,	10h, 40m,	Morning.
NEW MOON	29th day,	1h, 42m,	Morning.

Day of W.	M.	Sun		G. app. time.		High		Memoranda, &c., &c.
		rises at St. John's.	sets	Sun's Declination.	Equa of time. subl.	Water at St. John's.		
	Day of	h. m.	h. m.	° ' "	m. s.	m. a. m.		
F	1	6 4	5 36	S 3 7	10 15	8 33 8 9		1st Telegraph Message
S	2	6 5	5 33	3 31	10 34	9 11 8 47		from C. Breton, '56
Su.	3	6 6	5 31	3 54	10 53	9 48 9 24		First Steamer on
M	4	6 8	5 29	4 17	11 11	10 33 10 9		River Hudson, '07
T	5	6 9	5 27	4 40	11 29	11 21 10 57		Battle Thames, 1813
W	6	6 11	5 25	5 3	11 47	12 18 11 54		Jenny Lind b., 1820.
Th.	7	6 12	5 23	5 26	12 4	1 9 12 45		
F	8	6 14	5 22	5 49	12 21	2 34 2 10		
S	9	6 15	5 20	6 12	12 38	3 42 3 18		Great fire in Chi-
Su.	10	6 17	5 18	6 35	12 51	4 33 4 9		cago, 1871.
M	11	6 18	5 16	6 58	13 9	5 56 5 32		
T	12	6 20	5 14	7 20	13 25	6 42 6 18		America discovered,
W	13	6 21	5 12	7 43	13 39	7 32 7 8		1492.
Th	14	6 22	5 10	8 5	13 53	8 42 8 18		Battle of Jena, 1806.
F	15	6 24	5 8	8 28	14 7	9 55 9 31		
S	16	6 25	5 6	8 50	14 20	11 15 10 51		Queen Marie Antoi-
Su.	17	6 27	5 4	9 12	14 32	0 13 11 49		nette beheaded,
M	18	6 28	5 2	9 34	14 44	1 30 1 6		1793.
T	19	6 30	5 0	9 56	14 5	2 21 2 0		
W	20	6 31	4 58	10 17	15 6	3 2 2 38		
Th.	21	6 33	4 57	10 39	15 16	4 5 3 41		Battle of Trafalgar,
F	22	6 34	4 55	11 0	15 25	5 8 4 44		1805.
S	23	6 36	4 53	11 21	15 31	5 52 5 28		
Su	24	6 37	4 51	11 42	15 42	6 37 6 13		Webster died, 1852.
M	25	6 39	4 50	12 3	15 49	8 1 7 57		Battle Ballaklava, '54
T	26	6 40	4 48	12 24	15 55	8 28 8 4		
W	27	6 42	4 46	12 44	16 1	9 28 9 4		
T	28	6 43	4 45	13 5	16 6	10 27 10 3		Benevolent Irish So-
F	29	6 45	4 43	13 25	16 10	. . . 6 51		ciety Incorporated,
S	30	6 46	4 41	13 45	16 13	8 3 7 39		1839.
Su.	31	6 48	4 40	S 14	4 16 16	8 43 8 19		

eye, forming a circle entirely round the heavens, is supposed to be the remoter parts of the group of stars in which our Sun is enveloped. To a spectator at a distant point in the heavens it may appear as a small annular nebula, or as a thin stratum of starry light covering but a small space in the sky. In the con-

NOVEMBER, 1875.

MOON'S PHASES,

Calculated for Mean Time at St. John's, Newfoundland.

FIRST QUARTER 6th day, 6h, 22m, Morning.
 FULL MOON 13th day, 5h, 59m, Morning.
 LAST QUARTER 19th day, 9h, 7m, Morning.
 NEW MOON 27th day, 7h, 14m, Morning.

Day of W.	Day of M.	Sun		G. app. time.		High		Memoranda, &c., &c.	
		rises	sets	Sm's Declination.	Equa of time.	Water at St. John's.			
		at St. John's.							
		h.	m.	°	'	m.	s.	p. m.	
M	1	6 49	4 38	S 14	24 16	18	9 24	9 0	All Saints' Day.
T	2	6 51	4 36	14	43 16	19	10 10	9 56	All Souls' Day.
W	3	6 53	4 35	15	2 16	19	10 58	10 34	Free St. Andrew's Church opened, '50.
T	4	6 54	4 33	15	20 16	18	11 50	11 26	Bat. Inkerman, 1854.
F	5	6 56	4 32	15	39 16	17	12 52	12 28	
S	6	6 57	4 30	15	57 16	15	1 45	1 21	
SU.	7	6 59	4 29	16	15 16	12	3 2	2 38	
M	8	7 0	4 27	16	33 16	8	4 15	3 51	
T	9	7 2	4 26	16	50 16	3	5 13	4 49	Prince Wales b., '41.
W	10	7 3	4 25	17	7 15	58	6 5	5 41	Newfoundland and N. Y. Telegraph opened
T	11	7 5	4 24	17	24 15	52	6 53	6 29	1856.
F	12	7 6	4 22	17	40 15	44	8 1	7 47	
S	13	7 8	4 21	17	56 15	37	9 25	9 1	
SU.	14	7 10	4 20	18	12 15	28	10 57	10 33	Mozart born, 1719.
M	15	7 11	4 19	18	28 15	18	0 4	11 40	
T	16	7 12	4 18	18	43 15	7	1 25	1 1	
W	17	7 14	4 16	18	58 14	56	2 19	1 55	Suez Canal opened, 1869.
T	18	7 15	4 15	19	12 14	44	2 47	2 23	
F	19	7 17	4 14	19	27 14	31	3 21	2 57	
S	20	7 18	4 13	19	40 14	17	4 33	4 9	
SU.	21	7 20	4 12	19	54 14	2	5 21	4 57	
M	22	7 21	4 11	20	7 13	46	6 2	5 38	St. Cecilia.
T	23	7 23	4 11	20	20 13	30	6 34	6 10	
W	24	7 24	4 10	20	32 13	13	7 51	7 27	28--1st Sunday in Advent.
Th	25	7 26	4 9	20	44 12	55	8 36	8 12	
F	26	7 27	4 8	20	56 12	35	9 44	9 20	
S	27	7 28	4 7	21	7 12	16	...	6 27	First steam printing, 1814.
SU.	28	7 30	4 7	21	18 11	56	7 39	7 15	
M	29	7 31	4 6	21	28 11	35	8 22	7 58	
T	30	7 32	4 6	S 21	38 11	14	9 6	8 42	St. Andrew.

stellation, Argo Navis is a vast nebular cluster, in which from 2,000 to 6,000 stars have been revealed by the telescope, besides large nebulous tracts which no telescope has yet resolved into stars. This nebula is seen through the Milky Way, but is supposed to lie at an immeasurable distance beyond it.

DECEMBER, 1875.

MOON'S PHASES.

Calculated for Mean Time at St. John's, Newfoundland.

FIRST QUARTER	5th day, 10h, 26m, Morning.
FULL MOON	12th day, 4h, 15m, Evening.
LAST QUARTER	19th day, 11h, 25m, Morning.
NEW MOON	27th day, 3h, 34m, Evening.

Day of W.	Day of M.	Sun		G. app. time.		Equa		High		Memoranda, &c., &c.	
		rises	sets	Sun's Declination.	Time.	of Time.	Water at St. John's.				
		at St. John's.	at St. John's.	°	'	m.	s.	m.	a.	m.	
W	1	7 33	4 5	21	48	10	51	9	50	9 26	Bat. Austerlitz, 1805
T	2	7 35	4 5	21	47	10	28	10	35	10 11	
F	3	7 36	4 4	22	6	10	5	11	22	10 58	St. Andrew's Kirk opened, 1843.
S	4	7 37	4 4	22	14	9	41	0	9	11 46	
Sa.	5	7 38	4 3	22	22	9	16	0	48	12 24	
M	6	7 39	4 3	22	29	8	51	1	59	1 35	St. Nicholas.
T	7	7 40	4 3	22	36	8	25	3	16	2 52	
W	8	7 42	4 3	22	43	7	49	4	28	4 4	Sons of Temperance organized in Nfld., 1850.
Th.	9	7 43	4 3	22	49	7	33	5	30	5 6	
F	10	7 44	4 3	22	55	7	5	6	28	6 4	
S	11	7 44	4 3	23	0	6	38	7	34	7 10	
Sa.	12	7 45	4 3	23	5	6	10	9	9	9 45	
M	13	7 46	4 3	23	9	5	42	10	46	10 24	
T	14	7 47	4 3	23	13	5	13	11	51	11 27	George Street Wesleyan Church opened, 1873.
W	15	7 48	4 3	23	16	4	45	1	7	12 43	
Th	16	7 49	4 3	23	19	4	16	2	2	1 8	
F	17	7 49	4 4	23	22	3	46	2	33	2 9	
S	18	7 50	4 4	23	24	3	17	3	2	2 38	
Sa.	19	7 51	4 4	23	25	2	47	3	42	3 18	
M	20	7 51	4 5	23	26	2	17	4	36	4 12	
T	21	7 52	4 5	23	27	1	47	5	24	5 0	St. Thomas.
W	22	7 52	4 6	23	27	1	17	6	8	5 44	
Th.	23	7 53	4 6	23	27	0	47	6	59	6 23	
F	24	7 53	4 7	23	26	0	17	7	56	7 32	
S	25	7 53	4 7	23	24	0	12	9	7	8 43	CHRISTMAS DAY.
Sa.	26	7 54	4 8	23	2	0	42	10	23	9 57	St. Stephen.
M	27	7 54	4 9	23	20	1	12	6 52	St. John.
T	28	7 54	4 9	23	18	1	42	8	4	7 40	Innocents Day.
W	29	7 54	4 10	23	14	2	11	8	47	8 23	
Th.	30	7 55	4 11	23	11	2	40	9	28	9 4	
F	31	7 55	4 12	23	7	3	9	10	12	9 38	

Equation of time to be subtracted from apparent time to the 24th, and to be added the remainder of the month.

MERCURY.—The Aurora Borealis, after warm days, are generally succeeded by cooler air. Shooting stars are supposed to indicate wind.

A Table,

For telling the Weather through all the Lunations for each Year, for ever.

This table is the result of many years' actual observation; the whole being constructed on a due consideration of the attraction of the Sun and Moon, in their several positions respecting the Earth, and will, by simple inspection, show the observer what kind of weather will most probably follow the entrance of the Moon into any of its quarters, and that so near the truth as to be seldom or never found to fail.

MOON.	TIME OF CHANGE.	IN SPRING.	IN WINTER.
If the New Moon—the first Quarter—the Full Moon—or the last Quarter, happens	Between midnight and 2 ^o in the morning.	Fair.	Hard frost unless the wind be South or West.
	Between 2 and 4 morning.	Cold—frequent showers.	Snow and stormy.
	4 and 6 morning.	Rain.	Stormy.
	6 and 8 morning.	Wind and rain.	Cold rain if wind be West.
	8 and 10 morning.	Changeable.	Snow, if East.
	10 and 12 morning.	Frequent showers.	Snow or rain.
	At 12 o'clock, at noon, and 2 p.m.	Very rainy.	Fair and mild.
	Between 2 and 4 p.m.	Changeable.	Fair.
	4 and 6 p.m.	Fair.	Fair and frosty if wind N, or S.W.
	6 and 8 p.m.	Fair if wind N.W. Rainy if S. or S.W.	Rain or snow, if S. or S.E.
8 and 10 p.m.	Ditto.	Ditto.	
10 and midnight.	Fair.	Fair and frosty.	

OBSERVATIONS. 1.—The nearer the times of the Moon's change, first quarter, full and last quarter, are to midnight, the fairer the weather will be during the seven days following.
 2.—The space of this calculation occupies from ten at night till two next morning.
 3.—The nearer to midday or noon the phases of the moon happen, the more foul or wet weather may be expected during the next seven days.
 4.—The space of this calculation occupies from ten in the forenoon to two in the afternoon. These observations refer principally to the summer; though they affect spring and autumn, nearly in the same ratio.
 5.—The moon's changes—first quarter—full, and last quarter, happening during six of the afternoon hours, *i. e.*, from four to ten, may be followed by fair weather; but this is mostly dependent upon the wind, as is noted in table.

General Meteorological Register

St. John's, Newfoundland, Lat. 47° 34' 30" North.

TEMPERATURE.	JAN.	FEB.	MAR.
Mean temperature	23° 5'	22° 7'	29° 9'
Highest temperature	47.5	39.0	46.0
Lowest temperature	-1	-7	16.0
Mean maximum temperature	30.9	27.5	35.6
Mean minimum temperature	15.7	17.9	24.3
Greatest daily range	30.0	24.5	20.0
Least daily range	7.0	3.5	4.5
Mean height of barometer corrected for } temperature and sea level }	29.576	29.779	29.695
Highest barometer	30.555	30.327	30.219
Lowest barometer	28.911	29.126	29.027
Greatest daily range954	.533	.397
Least daily range080	.016	.037
Mean of daily range319	.180	.112
Mean of cloudness	6.4	6.8	6.4
Prevalent direction of wind	N. W.	N. E.	S. W.
Mean velocity of wind	1.6	1.5	2.1
Total amount of rain and melted snow } inches	4.51	8.70	4.60
Number of days of rain	6	5	8
Total amount of snow	24.07	62.75	16.25
Number of days of snow	8	15	7
No. of days fog and haze	10	12	11
Mean humidity of the air
Total amount of evaporation
No. solar halos observed	9	13	18
No. lunar halos observed	4	7	6
No. of auroras observed	4	3	3
No. of thunder
No. of lightnings
No. of gales	3	4	3
No. of days strong wind	2	3	4
Mean of ozone	3	1.9	2.7

TEMPERATURE.	MONTH.	TEMP.
Mean temperature of the year	40.3
Mean temp. of warmest month	Aug.	60° 4'
Mean temp. of coldest month	Feb.	22° 7'
Date of highest temperature	June 30	81° 0'
Date of lowest temperature	Feb. 3	-7

The above observations have been taken tri-daily, at 8 a.m., 2 p.m., and 9 p.m.

St. John's, Newfoundland, 2nd January, 1874.

for the Year 1873.

Long. 52° 30' 43" West, 150 feet above sea level.

APRIL.	MAY.	JUNE.	JULY.	AUG.	SEPT.	OCT.	NOV.	DEC.
34° 3'	42° 1'	50° 4'	60° 3'	60° 3'	54° 1'	43° 1'	36° 3'	25° 2'
51.0	68.0	81.0	80.0	80.5	74.5	70.0	68.0	54.0
24.0	26.0	33.0	41.0	41.0	30.9	29.4	14.0	6.5
38.6	49.9	59.	63.7	68.4	60.6	54.5	44.7	32.4
30.0	34.2	41.3	52.0	52.3	47.7	41.8	33.9	18.2
19.0	31.5	31.0	28.0	35.5	26.0	29.0	23.0	27.0
3.5	6.0	6.5	4	6.0	5.0	4.0	6	7.0
29.829	29.882	29.927	29.624	29.736	30.104	30.348	29.815	29.987
30.333	30.205	30.327	30.325	30.370	30.457	30.712	30.461	30.510
29.227	29.468	29.101	29.421	29.608	29.657	29.754	29.984	29.187
.439	.308	.347	.382	.210	.373	.291	.733	.751
.023	.009	.025	.009	.010	.013	.037	.028	.070
.271	.069	.080	.114	.080	.140	.118	.256	.276
7.7	6.2	6.4	6.3	5.8	6.5	6.2	7.6	6.4
S.E.	N.E.&E.	N.E.	S.&S.W.	S.S.E.	S.&S.W.	S.S.W.	S.&S.E.	W.N.W.
2.3	1.7	1.2	2.1	1.7	2	1.2	2	1.6
2.86	2.57	2.05	3.79	2.16	2.51	2.92	8.14	8.75
7	6	8	8	7	8	9	9	4
11.50	4.02	0	15.00	65.25
9	3	0	5	11
12	13	10	7	8	9	13	10	8
.....	56	68	68	85
.....	2.06	3.24	3.10	2.48	1.20	0.90
13	10	9	8	9	15	9	8	10
7	6	2	5	3	3	6	4	7
4	4	5	1	2	4	2
.....	1	2	1	1
.....	3	2	2	2
5	2	3	1	2	3	2	3
3	4	3	5	3	6	4	7	4
3	3.2	3	3	1.9	1.2	1.2	1.4	3.6

BAROMETER.	MONTH.	BAR.
Mean pressure of the year	29.858
Month of highest mean pressure	October	30.342
Month of lowest mean pressure	January	29.576
Date of highest pressure of year	Oct. 30	30.712
Date of lowest pressure of year	Jan. 28	28.911

JOHN HIGGINS, *Observer for*
JOHN DELANEY.



The Royal Family of Great Britain.

ALEXANDRA VICTORIA, by the Grace of God, of the United Kingdom of Great Britain and Ireland, Queen, only daughter and heir to the late Prince Edward, Duke of Kent, fourth son of King George III. Her Majesty was born at Kensington Palace, on the 24th May 1819; baptised on the 24th June 1819; ascended the throne on the demise of her uncle, King William IV., 20th June 1837; proclaimed 21st June 1837; and crowned at Westminster on the 28th June 1838. Her Majesty was married at St. James's Palace, on the 10th February 1840, to her cousin, his late Royal Highness, Francis-Albert-Augustus-Charles-Emanuel, Duke of Saxe, Prince of Coburg and Gotha, who died at Windsor Castle, on the 14th December, 1861. Children:—

Victoria-Adelaide-Mary-Louisa, *Princess Royal*, born 21st Nov. 1840; married 25th Jan. 1858, at the Chapel Royal, to His Royal Highness, Prince Frederick-William-Nicholas-Charles, of Prussia.

Albert-Edward, *Prince of Wales and Earl of Dublin*, born 9th November 1841; married 10th March 1863, at Windsor, to Princess Alexandra, daughter of Prince Christian, of Denmark.

Alice-Maud-Mary, born 25th April 1843; married 1st July 1862, at Osborne, to His Royal Highness, Prince Frederick-William-Louis, of Hesse-Darmstadt.

Alfred-Earnest-Albert, born 6th August 1844; married 26th February 1874, to Her Imperial Highness, Marie-Alexandrovna, daughter of the Czar of Russia.

Helena-Augusta-Victoria, born 25th May 1846; married 5th July 1866, to His Royal Highness, Prince Christian, of Schleswig Holstein Sonderburg Augustenburg.

Louisa-Caroline-Alberta, born 8th March 1848; married 23rd March 1871, to the Marquis of Lorne.

Arthur-William-Patrick-Albert, born 1st May 1850.

Leopold-George-Duncan-Albert, born 7th April 1853.

Beatrice-Mary-Victoria-Feodore, born 14th April 1857.

Her Majesty's Chief Officers of State.

THE CABINET.

First Lord of the Treasury—Rt. Hon. B. D. Disraeli.
 Lord High Chancellor—Right Hon. Lord Cairns.
 Lord President of the Council—His Grace the Duke of Richmond.
 Lord Privy Seal—Rt. Hon. Earl of Malmesbury.
 Chancellor of the Exchequer—Rt. Hon. Sir Stafford H. Northcote.
 Secretary for Home Department—Rt. Hon. Richard A. Cross.
 Secretary for Foreign Affairs—Rt. Hon. Earl of Derby.
 Secretary for the Colonies—Rt. Hon. Earl of Carnarvon.
 Secretary of War—Rt. Hon. Gathorne Hardy.
 Secretary for India—Most Hon. Marquis of Salisbury.
 Postmaster General—Lord John Manners.
 First Lord of the Admiralty—Rt. Hon. George W. Hunt.

NOT IN THE CABINET.

President of the Board of Trade—Rt. Hon. Sir C. B. Adderley.
 President of the Poor Law Board—
 Vice-President Education Committee—Rt. Hon. Lord Sandon.
 Chief Commissioner of Works, &c.—Rt. Hon. Lord H. Lennox.
 Commander-in-Chief—H. R. H. the Duke of Cambridge.
 Chancellor of Duchy of Lancaster—Rt. Hon. Col. Taylor, M.P.
 Judge-Advocate-General—Rt. Hon. Stephen Cave, M.P.
 Under Secretaries for the Colonies—Rt. Hon. James Lowther,
 Rt. Hon. Robert G. W. Herbert.
 Attorney General—Sir Richard Bagdally, Q.C.
 Solicitor General—John Holker, Q.C.
 Under Secretary for War—Earl of Pembroke.

IRELAND.

Lord-Lieutenant—His Grace the Duke of Abercorn.
 Secretary for Ireland—Sir R. M. H. Beach.
 Under Secretary—T. H. Burke, Esq.
 Commissioners of the Great Seal—Rt. Hon. Sir Joseph Napier,
 Bart., Mr. Justice Lawson and Master Brooks.
 Lord Justice of Court of Appeal—Rt. Hon. Sir Wm. James.
 Vice-Chancellor—Rt. Hon. H. E. Chatterton.
 Attorney General—Rt. Hon. John J. Ball.
 Solicitor General—Henry Ormsby, Q.C.
 Law Adviser—Geo. A. Chichester May, Q.C.
 Commander of the Forces—Gen. Lord Strathmairn, G.C.B.
 Hereditary Lord High Steward—Adm. the Earl of Shrewsbury and Talbot.

SCOTLAND.

Lord Justice General—Rt. Hon. John Inglis, L.L. D.
 Keeper of the Great Seal—Earl of Selkirk.
 Keeper of Privy Seal—Earl of Dalhousie, K.T., G.C.B.
 Lord Justice Clerk—Rt. Hon. James Moncrieff.
 Lord Advocate—Rt. Hon. Edward S. Gordon, Q.C.
 Lord Clerk Register—Rt. Hon. Sir Wm. Gibson Craig, Bt.
 Solicitor General—John Millar, Q.C.
 Commander of the Forces—Major-Gen. Randal Rumley.



Colony of Newfoundland.

Governor, Commander-in-Chief, and Vice-Admiral.

HIS EXCELLENCY COLONEL SIR STEPHEN J. HILL, C.B.,
K.M.G.

Private Secretary.

CAPTAIN HENRY J. F. SHEA, R.A.

Colonial Aid-de-Camp.

EDWARD L. JARVIS, Esquire.

The Executive Council.

The Honorable F. B. T. Carter, *Premier.*
The Honorable James J. Rogerson.
The Honorable Edward D. Shea.
The Honorable W. V. Whiteway.
The Honorable Stephen Rendell.
The Honorable W. J. S. Donnelly.

Clerk of the Council—Edward D. Shea.

The Legislative Council.

The Honorable Edward Norris, *President.*
The Honorable Nicholas Stabb.
The Honorable Robert Kent.
The Honorable James S. Clift.
The Honorable Edward White.
The Honorable Peter G. Tessier.
The Honorable John Winter.
The Honorable Edward D. Shea.
The Honorable William J. S. Donnelly.
The Honorable Robert J. Pinsent, Q.C.
The Honorable Augustus W. Harvey.
The Honorable Robert Thorburn.
The Honorable Thomas Talbot.
The Honorable Stephen Rendell.

Master-in-Chancery and Clerk—Thomas J. Kough.

Usher of the Black Rod—William F. Rennie.

Doorkeeper—James Waish.

Assistant Doorkeeper and Messenger—James Corcoran.

The House of Assembly.

(See Appendix.)

Clerk—John Stuart.*Clerk Assistant*—Richard B. Holden.*Solicitor*—John H. Boone.*Sergeant at Arms*—John B. Barnes.*Librarian*—Richard B. Holden.*Doorkeeper*—John Hally.*Messengers*—Peter Higgins and George Garrington.*Under Doorkeeper*—Walter Irvine.*Outer Doorkeeper*—John Brien.*Assistant Doorkeeper and Messenger*—William Kelley.*Fireman*—John Higgins.**Public Officers--Departmental.***Attorney General*—Hon. F. B. T. Carter.*Colonial Secretary*—Hon. E. D. Shea.*Receiver General*—Hon. J. J. Rogerson.*Solicitor General*—Hon. W. V. Whiteway.*Surveyor General*—John H. Warren.*Chairman Board of Works*—Charles Duder.**Colonial Secretary's Office.***Colonial Secretary*—Hon. E. D. Shea.*First Clerk*—Joseph Crowdy.*Second Clerk*—John W. Withers.*Office Keeper and Messenger*—James Dunphy.

FINANCIAL SECRETARY'S OFFICE.

Clerk—Richard Howley.**Revenue Department.**

BOARD OF REVENUE.

President—Hon. James J. Rogerson, Receiver General; Edwin Duder, Robert Thorburn.

REVENUE ESTABLISHMENT.

Receiver General, Hon. James J. Rogerson. Assistant Collector, James S. Hayward, Esq. Landing and Tide Surveyor, James L. Noonan. Landing Waiters, James Winter and W. S. Canning. Third Landing Waiter and Assistant Tide Surveyor, William White. First Clerk and Warehouse Keeper, William Doutney. Second Clerk, William Gill. Third Clerk, John R. Kearney. Fourth Clerk and Locker, Patrick Furlong. Fifth Clerk, John R. Noonan. Lockers, Richard Meagher and Richard Lamery.

Authorised Broker, Henry J. Stabb.

OUTPORT SUB-COLLECTORS.

Fogo, John G. Lucas. Greenspond, William Lang. Trinity,

William S. Green, J.P. Carboncar, Felix J. McCarthy. Harbor Grace, Alexander Clift; Clerk and Landing Waiter, Thomas W. Gaden. Brigus, John C. Nuttall. Burin, Thomas Winter.— Lamaline, Henry Benning. Harbor Breton, Thomas Birkett. Pushthrough, (Fortune Bay) Henry Camp. English Harbor, ———. Gaultois, Richard Bradshaw. LaPoile, Francis A. Reid, J.P. Twillingate, Joseph J. Pearce. Great Placentia, William G. Bradshaw. Oderin, Richard McGrath. Channel, (Port-aux-Basque) ———. St. Lawrence, ———.

PREVENTIVE OFFICERS.

Bonavista and Catalina, John Miffen. Bay Bulls to Mobile, exclusive, J. Williams. Mobile, inclusive, to LaManche, Thomas Driscoll. Ferryland, William S. Carter. St. Mary's, Thos. P. O'Leary. Little Placentia, Thomas Freeman. Bay Roberts, G. W. L. Tierlihy. Hants Harbor, James L. Mews. Burgeo, F. A. Parsons. Great Placentia, ———. Grand Bank and Fortune, (Fortune Bay) George Simms. Trepassey, Augustus Simms. Tilt Cove, Samuel W. Baird. Rose Blanche, John Furneaux. St. Lawrence, Hugh Vavasseur.

CUSTOMS DEPARTMENT.

Comptroller of Customs and Registrar of Shipping for Newfoundland and its Dependencies, Hon. James J. Rogerson. Surveyors of Shipping, W. White, St. John's. Alexander Clift, Harbor Grace. ———, Trinity. ———, English Harbor. David Murphy, Cape Bonavista to Salvage. William Lang, Salvage to Cape Freels. ———, Grand Bank and Fortune. John Miffen, Catalina to Ragged Harbor. Joseph J. Pierce, Twillingate to Change Islands. Samuel Baird, Tilt Cove. John Furneaux, Rose Blanche.

TREASURY DEPARTMENT.

Receiver General, Hon. James J. Rogerson. Clerk, George F. Hayward.

LABRADOR—*Collection of Duties under Act 26 Vic., Cap. 1 and 2.*

Collector, M. T. Knight. Sub-Collector, Blanc Sablon, Labrador, M. W. Stephenson.

Superintendent of Mercantile Marine, Robert Carter.

Surveyor General's Department.

Surveyor General, John H. Warren.

First Clerk and Draughtsman, William M. H. Warren.

Second Clerk and Topographical Surveyor, Thomas Long.

Assistant Clerk and Chairman, Carteret Alsop.

DEPUTY SURVEYORS IN OUTPORTS.

Northern District—Gilbert H. Cole, Trinity. Charles E. Thompson, Bonavista. Daniel Murphy, King's Cove. Robert Strathie, Musgrave Cove. John T. Oakley, Green-pond. Henry Miles,

Open Hall. Thomas Peyton, Twillingate. ———, North Shore of Notre Dame Bay. William Casey, Carboncar. G. W. E. Hierlihy, Bay Roberts. John Herne, Brigus. W. Christian, Trinity Bay South. Moses Tilley, Random Sound. Pierce Hanrahan, North Shore Conception Bay. George Carter, South Shore Conception Bay.

Southern District—John W. English, St. Mary's. Henry Camp, Fortune. Philip Hubert, Fortune Bay. ———, Burin. ———, Grand Bank. Michael Kelley, Cape Broyle. Thos. Driscoll, Bay Bulls.

Board of Works Department.

Having the management and superintendence of Government House, Colonial Building, Court Houses, Gaols, Custom Houses, Hospitals, Lunatic Asylum, and all other Buildings and Property belonging to the Colony; Light Houses, Buoys and Beacons erected or to be erected within the Colony and its Dependencies; supervision of Commissioners of Roads, Highways, Bridges, &c.

BOARD OF WORKS.

Chairman, Charles Duder; Hon. W. V. Whiteway, William Boyd, Hon. R. Nent and Gilbert Browning.

Secretary, John Stuart.

Superintendent of Public Works and Buildings and Inspector of Light Houses, John T. Nevill.

Clerk, Robert Reader.

Road Surveyor and Inspector, ———.

OUTPORT BOARDS OF ROAD COMMISSIONERS.

Harbor Grace proper—Robert Walsh, Charles Ross, Patrick Devereux, William Tapp, John Patterson, Mark Parsons and James Hippisley.

South Side Harbor Grace and Bryant's Cove—John Noel, William Webber, John S. Stephenson, (Bryan's Cove) P. K. Norcott and Moses Parsons.

Spaniard's Bay—Moses Gosse, William Baggs, William H. Earle, Robert Gosse and Thomas Whelan.

Upper Island Cove and Bishop's Cove—James Crane, Israel Gosse, John Barrett, Joseph Drover and Eliel Drover.

Carboncar—Nicholas Nichole, Benjamin J. F. Gould, Ambrose Forward, Michael Gould, Michael Dwyer, Felix J. Mc——, Dr. John Ryall.

Bay Roberts—Isaac Bartlett, Stephen Parsons, Charles French, James Culleton, Mark Delauey, sr., Eli Daw.

Brigus to Port-de-Grave, both places inclusive—James Tarahan, Patrick Nowlan, John Wilcox, John Bartlett, Moses Clarke, W. A. Green, J. Walsh, G. G. Crosby, R. LeDrow and John Smith jr., (Cubits.)

Port-de-Grave, Northern side of Northern Gut Bridge—Dr. Bro Thomas Butler, ——— Kenny, John Butler, (Sand) John M. S——.

dock, John Andrews, Isaac Richards, Thomas Batten, James Moores, Robert Hampton.

Topsail to Indian Pond, inclusive—George Carter, Patrick Daily, John Haddon, R. Parmiter and Philip Walsh.

Indian Pond, exclusive, to Turk's Gut, inclusive—Very Rev. J. O'Donnell, Charles Furey, M. Woodford, (Harbor Main) John Kennedy, (Holyrood) James Moore and James Wade, (Cats Cove.)

First Division, Freshwater to Perry's Cove, inclusive—Joseph Joyce, John Swain, Thomas Rose, George Everley and Francis Pike.

Second Division, Spout Cove to Ochreuil, inclusive—John C. Moores, James Thistle, James Crowley, Alfred James, Pierce Mairahan, John Diamond and Archelaus Halfyard.

Third Division, Northern Bay to Caplin Cove, inclusive—John Lewis, J.P., Simeon March, Jacob Moores, Joseph Wilshear, Edwin Turner, George Tuff and George Cull.

Fourth Division, Bay-de-Verds and Low Point—Rev. G. S. Chamberlain, Henry Blundon, Charles Blundon, James Moores, Thos. Neil, Wm. Loquer and Wm. North.

Grates Cove—William Meadus, J. P., John Bensen, Elijah Bensen, Wm. H. Meadus and Joseph Snelgrove.

Old Perlican—Joseph Boyd, William Christian, Elias March, Jabez Strong, Joshua Burt, John Brown (Lance Cove.)

Hants Harbor—James H. Watson, J.P., John Sheehan, J.P., Richard Pelley, Charles Green, John Short, Robert Belbin, (Seal Cove) Moses Button, (Russels Cove.)

Heart's Content—Rev. George Gardner, Richard Penney, Alex. Donnan, Alfred Hopkins, Reuben Bemister, J.P., (New Perlican) Simeon Avery, Jacob Hiscock, (Seilly Cove) William Sooley, and Samuel Humphries, (Heart's Delight.)

New Harbor—Moses Parsons, Thomas Newhook, Jacob Miller, Edward Moore, Albert George, (Dildo Cove) Wm. Hopkins and Charles Crocker (Green's Harbor.)

Random Sound, South West Arm—James Drover, (Hodges Cove) George Vardy, (Clay Pits) Wm. Blundell, Hezekiah Benson, (St. Jones') Matthias Martin, (Northern Bight) Richard Seward, (Gooseberry Cove) James Pond (Fox Harbor.)

Random Sound, North West Arm—Charles Reed, (Foster's Point) Job Pelley, (Robinson's Bight) Charles Bryant, (Conny Island) Hezekiah Blundell, (Hickman's Harbor) Moses Smith, (Elliott's Cove) James Penny King, (Deer Harbor) James Mills (Thoroughfare.)

Random Sound, Shoal Harbor—Moses Tilley, Aaron Tilley, (Shoal Harbor) Charles Ansford, (Deep Bight) Isaac Adey, (Lee Bight) Edmund Pilly, (George's Brook) Joseph Tilley, (Little Shoal Harbor) William Cooper (Maggoty Cove.)

Smith's Sound—Pierce Currie, John Late, David Currie, Absolom Cooper, James Pitman, (Brick Yard) Robert Stone, (Rocky Brook) Hezekiah Blundell (Hickman's Harbor.)

Trinity—Rev. Benjamin Smith, G. H. Cole, J.P., Alexander

Bremner, J.P., Robert White, J.P., William Pitman, Benjamin Miller, Frederick Gover. (Tronty) George Fleet, (Cuckold's Cove) Arthur Watts, (North Side) John Randle, son of Isaac, (Ship Cove) Robert Lawlor, (North Side.)

English Harbor and Salmon Cove—J. S. Collis, Mark Wills, John Batston, William Buggden, Sprague Freeman, John Goss, Jacob Pitcher, (Salmon Cove.)

Bird Island Cove—Arthur Tilley, Charles Trass, Abednego Hobbs, Thomas Tilley, George Oidford.

Catalina and Ragged Harbor—Thomas Stone, Alexander Bremner, Stephen Jeans, David Rennie, Isaac Snelgrove, Thomas McCormack, Wm. Norman, Josiah Stone, (Little Catalina) Thomas Donovan, (Ragged Harbor.)

New and Old Bonaventure—Capt. Field, Moses King, Robert Hobbs, (Cat Cove) Levi Short, (Old Bonaventure) Edward Gardner, (British Harbor.)

Greenspond—J. T. Oakley, J.P., sr., Frederick White, John J. Murphy, J. T. Oakley, jr., George Allen, jr., John Dominy, Robert Whitemarch.

Pool's Island—Peter House, Job Davis, William Knee, (Pool's Island) John Winsor, (Swain's Island) John Hawe, Joseph Gill, (Pinchard's Island) Jacob Bidout, (Cape Freels.)

Brooklyn—M. D. Stares, William Stares, sr., Matthew Wagh, Francis Stares, John Handcock, jr., William Blundon, William Handcock.

Musgrave Town—Robert Strathie, Thomas Greening, Thomas Saint, James Reader, sr., Joseph Greening, Thomas Holloway, George Manuel.

Subrage—Rev. H. M. Skinner, James Burden, J.P., Thomas Oidford, John Sheppard, (Barrow Harbor) John Samson, James Pike, (Flat Island) John Squires and James Brown, (Bishop's Harbor.)

Bonavista—David Candow, J.P., John G. Skelton, M.D., Jabez Saint, J.P., Samuel Rowsell, Charles E. Thompson, Alfred Vincent, William Brown, Thomas Harris, Samuel Milfen, John Swyers.

Kings Cove—Rev. W. Kirby, Rev. — Hanley, James Brown, Daniel Murphy, Samuel Brown, James Sullivan, John Coffin, John Moak, Simon Tobin (Broad Cove.)

Keels & Tickle Cove—Robert Penny, James Penny, James Eagau, John Murphy, Andrew Skiffington, John Taylor, Samuel Coffin.

Gooseberry Island—Ambrose Jeans, Edward Sweetapple, William Jacobs, Simon Wells, Joseph House, John Turner, Joseph Hayward.

Open Hole to Plate Cove and Red Cliff Island—Frederick Shears, Henry Miles, William Barker, (Open Hole,) Nicholas Sheevers, (Plate Cove) William Quinton, (Red Cliff Island.)

Indian Arm and Seal Cove—John Prince, jr., John Prince, sr.,

(Seal Cove) Edward Humby, William Greening, (Indian Arm) Richard Taylor, (Head of Bay) William Tilley, Joseph Brown, (Indian Arm) George Prince, (Seal Cove).

Trilligate—Thomas Peyton, John Spence, William Curtis, William Lethbridge, Francis Roberts, John Roberts, John B. Blandford.

Fogo—John Banks, Nicholas Fitzgerald, Robert Scott, Thomas Humphries, Richard Power, Hay Findlater, James Fitzgerald, Peter Pickett.

Change Islands, Fogo—Alfred Pike, Thomas N. Taylor, John Pilley, Wm. LeDrew, Thomas Tourivelle, Henry Seammell, Edward Elliot.

Indian Islands—Samuel Penny, William Collins, William Perry.

Burr'd Island and Joe Bot's Arm—James Rolls, Joseph Camden, James Primmer, Miles Burke, Thomas Dealy, Thomas Brown, Joseph Jacobs.

Herring Neck—William Bong, Joseph Blandford, Richard Philpots, Henry Miles, William Richards, Robert Lewis, Wm. Tracy.

New Bonaventure—Edward Gardner, James Toop, John Gardner, Joseph Miller, James Iwamy.

Ward's Harbor to Jacket's Arm—J. Campbell, (Little Bay Islands) John Rousell, (Ward's Harbor) James King, (King's Cove) William Marshall, (Little Bay Islands) John B. Wills, James Norris, (Three Arms.)

North West Arm to Shoe Cove—Frederick Thomas, William Noble, Charles Collins, Joseph Mills, James Gray, Jacob Toms, James White.

Tilton Harbor—Rev. James Brown and William Burke, John Brine, John Dwyer, William Green.

Moreton's Harbor, including Black Island—Mark Osmond, Wm. Taylor, Charles Brett, Thomas French, James Jones and Elijah Jennings.

Burnt Island, Exploits—Edward Downton, Thomas Butt, Wm. Sevin, Andrew Pearce, Josiah Manuel, James Winsor, Thomas A. Winsor.

Fortune Harbor—James Hamilton, Michael Bryan, Michael Byrne, Matthias Glaveen, Patrick Carroll, William Corroll, (Indian Cove) James Lyver, (Waldron's Cove.)

Jackets Arm to Head of Green Bay—John Knight, J. Campbell, John Rowsell, John Wills, Joseph Mills.

Shoe Cove to Nippers Harbor—James Grey, John Stark, Wm. Noble, John Walshman.

Leading Tickle—James Alcock, Edward Butler, William Rowsell, Thomas Rowsell, Joseph Hackett.

Cat Harbor to Rocky Bay—John Wheeler, Robert Wellon, John Bradley, William Pardy, (Musgrave Harbor) Matthew Gibbons, Cat Harbor: Robert Shelley, Rocky Bay.

Witless Bay and Baleen—Very Rev. Dean Cleary, James Murphy, Thomas Driscoll, James Carey, Samuel Driscoll, Thomas Gatherall.

Bay Bulls—William G. Williams and Richard Mockler.

Ferryland, Caplin Bay and Aquaforte—Rev. M. A. Clancey, Edmund Hanrahan, John White, James Carter, Ferryland; Patrick Power, Ed. Kough, sr., Benjamin Morry, Caplin Bay; Peter Winsor and Michael Meagher, Aquaforte.

Renews and Fermeuse—Michael Jackman, Andrew Shallow, Jas. Berrigan, Renews; Michael Lawlor, Broad Cove; William Trainor and Thomas Fennelly, Fermeuse.

Cape Broyle and Brigus—Winsor, M. Cashin, Thomas Carew, — Green, Cape Broyle; Nicholas Power, John Badcock, Brigus.

Trepassey—Rev. T. Hennebury, Henry Curtis, James Waddleton, George Devereux, Thomas Sutton.

St. Kyran's—Rev. James Walsh, Rev. Laurence Vereker, and Thomas Sullivan, Oliver's Cove; William Tibbo, Presque; M. E. Dwyer, Isle Valen; William Ryan, Paradise.

Harbor Buffit—Rev. John Kingwell, C. D. Chambers, John Miller, Thomas E. Collett, Thomas Hand, Patrick Murphy.

Bean Harbor—Rev. John Kingwell, Richard Radway, Joseph Smith.

Oderin—Rev. M. Morris, Richard McGrath, Philip Power, Andrew Murphy.

Great Placentia—Rev. Charles Irvine, Thomas O'Rielly, J.P., Stephen Power, P. Fitzpatrick, John Cosgrove.

Little Placentia—Rev. Robert Brennan, W. Phoran, Alexander Burke, Thomas Connors, Thomas Freeman.

Sound Island and vicinity—A. Blackader, Philip Brown, James Hollett.

Branch and Distress—Rev. James Whelan, Edward Conway, Richard Karsen, Peter Nash, Matthew Lonergan, Thos. Young.

Salmonier (South)—Cormack, William Curtis, Daniel Daly.

Salmonier (North)—Matthew Carew, Hector Fraser, Andrew Nowlan.

St. Mary's—Michael Whelan, Patrick Nowlan, Charles Ryan, Michael Fagan, Michael Mahoney.

North Harbor and John's Pond—Patrick Bonia, Thomas Power, Jeremiah Linnahan.

Holyrood and Peter's River—William St. Croix, Michael Hollahan, Michael Londregan.

Burin—Rev. William Born, John Paul, Michael Gorman, James Inkpen, Samuel Bennett, John Marshall, Samuel Breton.

Lamaline—John Collins, Thomas Haley, Robert Bonnel, John Fleming, Benjamin Bonnel, Kyran Maddigan.

Grand Bank—Edward Evans, Jonathan Snook, James Lake, William Burlitt.

Harbor Breton—Rev. W. K. White and Rev. Robert Brennan, Thomas Birkett, Phillip Hubert, James Hardy, F. Luce, H. T. Holman.

Settlements outside Fortune Bay—Rev. W. K. White, Harbor Breton; T. Bulley, Sagona; John Galton, Brunet; Samuel Fiander, Comb's Cove; John Rose, Little Bay; G. Keeping, Rencontre; Joseph Loader, Harbor Mille; Wm. Miles, Bay L'Argent.

Belloram—Rev. J. Bishop, John Grandy, Thomas Rows, John Rowkey, William Cluet.

Garnish—George T. R. Snelgrove, Samuel Banfield, Joseph Grandy, Thomas Grandy, Stephen Grandy.

St. Lawrence—Rev. W. Doutney, Robert Pike, William Fitzpatrick, Richard Quirk, James Reeves.

English Harbor— — Hall, Samuel Fiander, T. Evans, Wm. Burke, Denis Burke, John Ott, Samuel Vallance, Wm. Yarn.

Gaultois—Rev. E. Colley, John Lee, Richard Bradshaw, II. Shepherd, Dr. E. Thompson, Edward C. Gallop.

Rose Blanche and Harbor LeCeu—Rev. T. Netten, Thomas Ridout, John Hanhan, John Rolls, P. H. Sorsoliet, jr., John Farniaux, Charles Hatcher, Alexander McKenzie, R. W. Durfee, Samuel Bonnel.

Burgeo—Rev. John Cunningham, Dr. Hunt, Captain Small, — Filiers, James P. LeGros.

LaPoile—James LeGros, John Cox, Frederick P. Cox, John Hooper, Plante; Thomas Hooper, Henry Jeffries.

Burnt Island, Burgeo and LaPoile—Fred. J. Tweedle, Nathaniel King, sr., George Poole, Robert Smurridge, Jeremiah Fudge, Joseph Small.

Channel—Rev. Mr. Goode, John Keating, Charles Sheaves, John Forsey, John Farniaux, W. S. Green, John LeMoir, Geo. Charles E. Cossman.

Bay between Cape LaHune and Bonne Bay, District of LaPoile—Rev. E. Colley, Abraham G. Skinner, Mat-
thieu Synnes, James R. Watkins.

GAOLS.

St. John's Penitentiary—Keeper, Capt. W. J. Coon. First Turnkey, Samuel Shaw. Second Turnkey, J. Martin. Matron, Mrs. Bryan. Surgeon, Charles Crowley, M.D.

Harbor Breton—Gaoler, David Rogers. Surgeon, William A. C. M. D.

St. John's—Gaoler, Charles Granger.

St. John's—Gaoler, George Geary.

St. John's—Gaoler, Samuel Collins.

St. John's—Gaoler, John Murphy.

Devil's—Gaoler, Michael Fennel.
Twillingate and Fogo—Gaoler, Thomas Peyton.
Harbor Breton—Gaoler, William Lorenzen.
Brigas and Port-de-Grave—Gaoler, Thomas Butler.
Green Pond—Gaoler, John Bridle.

COURT HOUSES.

St. John's—Keeper, Lionel T. Chancey.
Harbor Grace—Keeper, David Rogers.
Ferry Land—Keeper, George Geary.

ST. JOHN'S HOSPITAL.

Medical Attendants—Charles Crowdy, M.D., and Charles H. Renouf, M.D. Matron, Miss Cowan. Keeper, John Prowse.

ST. JOHN'S POOR HOUSE.

Medical Attendants—Charles Crowdy, M.D., and Charles H. Renouf, M.D. Keeper, Mrs. Downey.

ST. JOHN'S LUNATIC ASYLUM.

Resident Physician—Henry H. Stabb, M.D.

DISTRICT SURGEONS.

St. John's—Eastern Ward—William C. Simms, M.D., Henry Shea, M.D. Western Ward—Frederick Bunting, M.D.
Conception Bay—William Allan, M.D.

COLONIAL BUILDING AND GROUNDS.

Keeper—Mrs. Born.

COMMISSIONERS FOR ERECTION OF PUBLIC WHARVES.

Catalina—Stephen Jeans, Thomas Stone, Benjamin Hellygrove, Thomas Murphy, David Rennie.

Carbonear—Israel L. McNeil, John Rorke, Michael Dwyer, Francis Taylor.

Britannia Cove, Trinity Bay—Rev. Geo. Harrington.

Brigus—John Bartlet, W. A. Green, John Wilcox.

Belloram—Rev. John Bishop, Thomas Cluett, John Cluett, John Romkey.

Old Perlican—William Christian, Joseph Bond, Elias Major, Joshua Burt.

Commissioners for the construction of a Public Wharf and T. Burgeo—Rev. John Cunningham, M. De Quetteville, Joseph S.

COMMISSIONERS FOR ERECTION OF BREAKWATERS.

Fortune—Elias Major, John Lake, John Spence, sr., Thomas Rogers, sr., John Forsey, sr., Edward Bennett.

Grand Bank—Robert Forsey, Wm. Burfitt, Henry Hickman, Wilson Lovell, Henry Nicholle, George Tibbo, George Forsey.

Twillingate—John Peyton, John W. Owen, John M. Nurse.

Great Basin—Owen Pine, James Inkpen, Henry Hollett.

Brigus—John Bartlett, W. A. Green, John Wilcox.

Ireland Island, entrance of LaPoile Bay—Philip Clement, Thos. Read, J.P., Frederick Cox.

Commissioners for Deepening Gut at Brigus—James Tarahan, B. G. Gardner, W. A. Green, John Sullivan, John Wilcox.

LIGHT HOUSES, HARBOR LIGHTS, &C.

Fort Amherst Light, at the entrance of St. John's—A light was first established at this station in 1813; in 1850 a new House, Lantern and apparatus were erected. The Light burns at an elevation of 114 feet, is produced by a double argand burner placed in the focus of an annular lens of the fourth order, and in favorable weather can be seen 16 nautical miles. When Cape Spear is enveloped in fog a heavy piece of ordnance is also discharged at this Fort every hour during daylight, to assist vessels in making the harbor. It is situated in lat. $47^{\circ}33'54''$ N., and long. $52^{\circ}40'18''$ W. John Sheppard, Keeper; Thomas Moore, Assistant.

St. John's—Two red lights are exhibited every night from sunset until sunrise, intended as leading marks for vessels entering the narrows. The lower Light on the roof of the Custom House—the other 400 yards in the rear, on a white post, within a few yards of the N.E. angle of the Congregational Church, and 180 feet above the level of the sea. These Lights will be readily distinguished from any other Lights in the town; and keeping them in a line bearing N. W. $\frac{3}{4}$ W., will lead in the largest vessel clear of all danger. To serve as leading marks also during the day, the pediment of the Custom House has been painted white; this is to be kept in line with the upper lantern, also painted white. Exhibited 1st September, 1863.

Cape Spear Light—This Light was first exhibited on the 1st September, 1835; it is produced by seven argand burners and silvered reflectors burning at an elevation of 264 feet—it revolves, shewing a bright Light every minute, and in favorable weather can be seen 26 nautical miles. It is situated in $47^{\circ}31'11''$ N. lat., and $52^{\circ}36'59''$ W. longitude. James Cantwell, Keeper; Dennis Cantwell, Assistant.

Cape Bonavista Light—Situate in lat. $48^{\circ}41'56''$ N., long. $53^{\circ}5'20''$ W.; is a revolving Light, showing alternately every 90 seconds a white and red Light. It is produced by 16 argand burners and reflectors, burns at an elevation above the sea of 150 feet, and in favorable weather can be seen 18 nautical miles. By keeping this Light open with Cape L'Argent, it will carry you clear of the Flower Rocks; first exhibited 11th September, 1843. Nicholas White, Keeper; Matthew White, Assistant.

Cape Pine Light—This tower is of iron, built by the Imperial Government in 1849-50, and first put into requisition on the 1st January, 1851. It is a fixed white Light, has 17 argand burners and reflectors—elevated above the level of the sea 314 feet—situated in lat. $46^{\circ}37'4''$ N., and in long. $52^{\circ}31'45''$ W. In a favorable state of the atmosphere it can be seen 26 nautical miles. George Hewitt, Keeper; Thomas Doran, Assistant.

Harbor Grace Beach Beacon and Light—First exhibited 11th September, 1850; stands on the point of Beach at the entrance of Harbor Grace. Sailing into Harbor Grace with a fair or leading wind, bring the Beach Beacon to bear W. or W. by S., and by keeping the Light or Building a little on the starboard bow it will bring you clear of the Bar, on which at low water there is not more than 8 feet of water. It is situated in lat. $47^{\circ} 41' 28''$ N., and in long. $53^{\circ} 12' 33''$ W.; elevation above the sea level 40 feet; in clear weather it may be seen at a distance of 11 nautical miles. George Brown, Keeper.

Green Island Light at the entrance of Catalina Harbor, Trinity Bay—Situate in lat. $48^{\circ} 36' 16''$ N., long. $53^{\circ} 2' 46''$ W. This is a fixed white light, burns at an elevation of 92 feet above high water, and in favorable weather will be seen from E.N.E. seaward, to S.W., 15 nautical miles. Vessels bound Northward by keeping this Light open with the North Head of Catalina until Beavista Light opens with Cape LeJean, will give the Flower Rocks an ample berth—or when coming from the Northward and bound for Catalina, by giving the N. Head a moderate berth, you will clear the Brandies Rocks by steering for Green Island Light. It was first exhibited in 1857. Peter Woods, Keeper; Henry Roper, Assistant.

Cape Race Light—Exhibits a revolving white Light, from sunset to sunrise. The light will be visible to seaward from N. E. by E., round by the S. E. and S. to W. The Light is elevated 180 feet above the mean water level of the sea, and may be seen in clear weather 19 nautical miles from a ship's deck. The tower is striped red and white vertically. It stands close to the old Beacon, which has been cut down. The Light House is in lat. $46^{\circ} 39' 30''$ N., long. $53^{\circ} 4' 30''$ W., and was first exhibited in 1856. Michael J. Hally, Keeper; George Simms, Assistant.

Cape Race Steam Fog Alarm—A powerful Steam Whistle has been placed on Cape Race, about 250 feet south of the Light House, which is sounded during thick or foggy weather or snow storms, for ten seconds, with intervals of silence of fifty seconds in each minute. The Whistle will probably be heard in calm weather 20 miles; with the wind 30 miles; and in stormy weather against the wind, from seven to ten miles.

Dodding Head, Great Burin Island Light—This Light was put in requisition on the 3rd August, 1858, and is exhibited every night from sunset to sunrise. It is revolving, catoptric of the second order, producing a brilliant White Light every minute, with intermediate flashes, at intervals of twenty seconds, burning at an elevation of 430 feet above the level of the sea, and in favorable weather can be seen 29 miles—situated in $47^{\circ} 0' 26''$ North Latitude, $55^{\circ} 8' 43''$ West Longitude. Austin Sheppard, Acting Keeper; John Churchill, Assistant.

Offer Waltham Island Light—Was first exhibited on the 4th October, 1858, and is lighted every night from sunset to sunrise. The Light is a steady, fixed lens-light, burning on a circular Brick Tower, 100 feet above the level of the sea, and can be

seen in a favorable state of the atmosphere 15 nautical miles. Situated in Latitude $49^{\circ}33'.0''$ North, Longitude $53^{\circ}47'.6''$ West. Charles Brown, Keeper; Henry Waterman, Assistant.

Baccalieu Island Light—This light is exhibited every night from the going away of daylight in the evening to the return of daylight in the morning. The Light house is situated on the Northern end of the Island—Latitude $48^{\circ}8'.51''$ North, Longitude $52^{\circ}47'.53''$ West—the tower is of brick, the keeper's dwelling (a square building detached from the tower,) is painted white, with the roof red.

The light is a catoptric first class Holophotal revolving white Light, showing a flash every twenty seconds. It is elevated 412 feet above high water, and can be seen in clear weather 20 nautical miles, and a lesser distance according to the state of the atmosphere. When the Southern end of the Island bears N.N.E., the Light will not be visible when nearer the Island than 8 miles. It was first exhibited in 1858. James Ryan, Keeper; John Ryan, Assistant.

Cape St. Mary's Light—Was put in requisition on the 20th September, 1860; it is a revolving catoptric Light of the first order, producing alternately every minute a brilliant red and a white light, burning at an elevation of 500 feet above the level of the sea, and will be seen in a favorable state of the atmosphere 26 nautical miles from a vessel's deck; situated in $46^{\circ}49'.36''$ N. lat., $54^{\circ}11'.34''$ W. long. The tower is of brick, and on each side of which stands the dwellings of the Keeper and Assistant, the sides of which are painted white, roofs red. John Rielly, Keeper; William J. Collins, Assistant.

Brunet Island Light, Mercer's Head, Fortune Bay—First exhibited 27th June, 1865. It is a powerful flashing white Light, and attains its greatest brilliancy every ten seconds. It burns at an elevation of 408 feet above the level of the sea, and in clear weather may be seen at a distance of 35 miles, and be visible in every direction from North round East and South, to W.N.W. Mercer's Head is a bold headland, and situated in long. $55^{\circ}59'.30''$ W., and lat. $47^{\circ}16'$ N. Martin Sparrow, Keeper; Jas. Gaulton, Assistant.

Harbor Grace Island Light—The fixed Light for many years past exhibited at Harbor Grace Island, in Conception Bay, was discontinued on the 1st December, 1869. The Light at that station is now revolving, showing in every direction two white flashes, followed by one red flash. The interval between each flash in attaining its greatest brilliancy will be 20 seconds. This Light, in a favorable state of the atmosphere, will be seen 25 nautical miles. It is situated in lat. $47^{\circ}42'.45''$ N., and long. $53^{\circ}8'.15''$ W. Austin Oke, Keeper; Patrick Houlahan, Assistant.

Ferryland Head Light—First exhibited on the 1st October, 1871. From sunset to sunrise a steady white Light of the 3rd order, burning on a brick tower 200 feet above the level of the sea, visible in favorable weather 16 nautical miles. Ferryland Head Light is situated in lat. $47^{\circ}00'.58''$ N., and long. $52^{\circ}51'.07''$ W. The tower is of red brick; the keepers dwelling, detached from

the tower, is painted white and the roof red. Michael Kearney, Keeper; Thomas Costello, Assistant.

1872. *Puffin Island, Greenspond*—The Light House on this Island is built of granite. The tower and keeper's dwelling are attached. The illuminating apparatus is dioptric of the 4th order, and a *fixed red* Light is exhibited every night from sunset to sunrise; it is 85 feet above the level of the sea, and in clear weather should be seen a distance of 12 miles. The Light is visible from North by East, through South to West by North by compass, and is situated in $49^{\circ}31'37''$ North lat., and $53^{\circ}32'27''$ West long. Robert K. Oakley, Keeper.

No. 1, 1873. *Belloram, Fortune Bay*—A *fixed white* Light is exhibited nightly at this place from sunset to sunrise, at an elevation of 35 feet above the level of the sea, and in clear weather should be visible seven miles. The building is a wooden tower, painted white, and is situated in lat. $47^{\circ}29'$ North, and $55^{\circ}27'15''$ West long. The apparatus is dioptric of the 8th order, with a single argand burner, and illuminates an arc of the horizon of 270° . In entering the harbor the light must be kept on the port hand. Samuel Clewett, sr., Keeper.

No. 2, 1873. *Rose Blanche Point*—This Light House is built of granite, upon the eastern head. The tower and keeper's dwelling are attached. The illuminating apparatus is dioptric, of the 4th order, and a *fixed white* Light will be exhibited from sunset to sunrise, at an elevation of 95 feet above the level of the sea, and it should be seen in clear weather for 13 miles. The light illuminates the horizon from East by South, through South to West by compass, and is situated in lat. $47^{\circ}35'48''$ North, and $58^{\circ}41'30''$ West long. Shag Island Black Rock bears West from the light and distant about one mile. Rose Blanche shoals W.S.W. half a mile, and Petites Black Rock E. by S. three miles. Keeper, John A. Roberts.

No. 3, 1873. *Fort Point, Trinity*—On and after 1st January, 1874, a *fixed white* light will be exhibited nightly from sunset to sunrise at this place upon a wooden tower painted white, and at a height of 75 feet above the level of the sea, and it should be visible in clear weather for eleven miles. The erection is situated in $45^{\circ}21'55''$ North lat., and $53^{\circ}29'51''$ West long. The apparatus is dioptric of the 8th order, with a single argand burner, and illuminates an arc of the horizon of 320° . In entering the harbor the light must be kept on the port hand. Keeper, William Rowe.

No. 4, 1874. *Cana Island, Seidonecome!*—A *fixed white* Light is exhibited nightly at this place, from sunset to sunrise, at an elevation of 85 feet above the level of the sea, and should be visible 12 miles. The tower and dwelling are of wood and attached, and are situated in latitude $49^{\circ}31'37''$ North and longitude $53^{\circ}32'27''$ W. The apparatus is dioptric of the 4th order, with a single argand burner, and illuminates an arc of the horizon of 270° . John Dochett, Keeper.

No. 2, 1874. *Boat Island, Bay of Islands*—A *fixed white* Light is exhibited nightly at this place, from sunset to sunrise, at an elevation of

160 feet above the sea, and should be visible 17 miles. The tower and dwelling are of wood and attached, and are situated in latitude $47^{\circ}36'.12''$ N., and longitude $57^{\circ}35'.13''$ W. The apparatus is dioptric of the 6th order, with a single argand burner, and illuminates an arc of the horizon of 270° . Edward Dicks, Keeper.

No. 3: *Channel Head, Port-au-Basques*—A wooden tower has been erected on this head, upon which a *fixed white* light will shortly be exhibited nightly. Latitude $47^{\circ}33'.47''$ N., longitude $59^{\circ}07'.10''$ W. Keeper not yet appointed.

There have been erected at the following places, Beacon Towers of wood, each carrying an octagon and lantern, in which a red light will be exhibited nightly, from sunset to sunrise.

Rocky Point, Harbor Breton, Fortune Bay—Situate in latitude $47^{\circ}27'.30''$ N. Longitude $55^{\circ}47'.45''$ W. William Lorenzen, Keeper.

Garnish, Fortune Bay—Latitude $47^{\circ}14'$ N., longitude $55^{\circ}24'$ W., (approximate.) Geo. T. Snelgrove, Keeper.

Beacon, Ireland Island, entrance of La Poile Bay—A square building of wood, painted white, with three black bands, has been erected on this Island. It is 75 feet high, and is supported by four chains.

J. T. Nevill, General Inspector of Light-houses.

Light Dues—One shilling per ton on all vessels entering any port or harbor of the Colony, except coasting, sealing, or fishing vessels; but not to be levied more than once in one year. Sealing and coasting vessels—Sixpence per ton on registered vessels of 40 tons and upwards; Fifteen shillings per annum on all vessels less than 40 tons.

The 19th of Victoria, Cap. 5, Sec. 5, enacts—"That no greater sum than £25 sterling shall be in any year levied for Light Dues on any steamer or vessel entering any port of this Colony; and no steamer plying between Europe and any port of North America, and entering any port of this Colony as a port of call, shall be liable to pay any Light Dues or other port charges except pilotage."

Gallantry Head, Island of St. Peter's—The Fixed Light on Gallantry Head, (Island of St. Peter's), since the 10th August, 1862, has been replaced by a Flash Light, with intervals of twenty seconds, and by one red flash after two white flashes; situated in lat. $46^{\circ}45'.30''$ N., long. $58^{\circ}27'.00''$ W.; elevation above high water, 64 metres, (204 English feet.) Distance at which the light is visible, 18 miles. The Light is hidden at the Northward by the high land of St. Peter's.

Light at the South Entrance of St. Peter's—Since 1st October, 1862, the entrance of the harbor of St. Peter's, called South Channel, has been marked by two small fixed Lights, one of which is a white Light, illuminating three-fourths of the horizon, and placed on the Battery—and the other a red Light, on

the plain at the north of the town. The white Light has an elevation of 11 metres, and is visible 6 miles. The Red Light is elevated 19 metres, visible 3 miles distant. The line connecting these two Lights indicates the Middle Channel.

The position of the red Light has also been so determined that as soon as it is seen on the left of Cape Eagle, vessels coming from Columbiar in beating into the N.E. entrance will have nothing to fear from the shoals of Cape Rouge.

Light on the South West point of the Islands of Dogs, called Pointe a Leconte—Commencing on the 1st of August, 1874, a Light will be exhibited on the South West Point of the Island of Dogs, at the place called Pointe a Leconte at 400 metres (437 English yards) to the West, † N.W., from the point marked on the chart by the name of Pointe Plate. The Light will be fixed and placed in an iron tower painted red, at an altitude of 19 metres (100 English feet) above the level of the sea. It will be seen in clear weather 7 miles. The extent of the Light is circumscribed in a sector of 163° presenting two cones of Light, one white, of 40° , will Light the passage of the S.E. so as to permit vessels which maintain position within this cone to avoid at the right the shoal Bataille, and to the left the rock of Cape Noir and the rock Bertrand. The second cone will be read, of 123° . It should be avoided by vessels entering by the S. E. passage, and will enable them, when they shall have quitted the white cone, to come to anchor in the roadstead or in the Barachois, in following the line of the white light from Pointe aux Canons, and of the red light from the interior of the city.

A Light House has been erected by the Government of Canada, on the Western side of Cape Ray, on the South-West coast of the Island of Newfoundland. Latitude $47^{\circ}.37'. N.$, Longitude $59^{\circ}.18'. W.$ A powerful flash White Light is exhibited, making a complete revolution in two and a quarter minutes, and flashing every ten seconds; at a long distance, however, it has the appearance of a steady light. The light can probably be seen at a distance of twenty miles in clear weather.

The Tower is a wooden building, hexagonal in shape, forty-one feet high, and painted white. The keeper's dwelling, also of wood, stands at a little distance from the Tower, and is also painted white.

The illuminating apparatus is Catoptric and consists of twelve Lamps and Reflectors.

A Fog Whistle is in operation at Cape Ray. It will be blown in thick and foggy weather and during snow storms, for 10 seconds in each minute, leaving an interval of 50 seconds between each blast. It can be heard from 3 to 15 miles.

Post Office Department.

Postmaster General—John Delaney, Esquire.

First Clerk and General Accountant—George LeMessurier.

Superintendent Money Order Office—Thomas S. Dwyer.

Second Clerk and Assorter—John Freeman.

Third Clerk and Assorter—George Gaden.

Letter Carriers and Messengers—John Higgins, James Campbell and John Power.

Office hours, from 9 o'clock, a.m., to 4 p.m., Sundays excepted.

POST MASTERS.

Harbor Grace, Andrew T. Drysdale; Carbonear, Nicholas Nicholle; Brigus, Sarah Stantaford, (Post Mistress); Trinity, Anne Cross, (Post Mistress); Bonavista, John Lawrence; Greenspond, William Lang; Fogo, James Fitzgerald; Twillingate, Jos. J. Pearce; Bay Bulls, H. J. Williams, (Post Mistress); Ferryland, John Morry; Placentia, Mrs. Hannah Bradshaw, (Post Mistress); Burin, Thomas Winter; Harbor Breton, Thomas Birkett; Burgeo, Francis A. Parsons; Little Placentia, Alexander Burke; New Perlican, Francis Howell; La Poile, Thomas Read; Chamel, Wm. S. Green.

WAY OFFICERS.

Port-de-Grave, Matthew O'Reilly; Bay Roberts, Eliza Moore, (Way Mistress); Black Head, John Moore; King's Cove, Bernard Murphy; Old Perlican, William Christian; Portugal Cove, Mrs. Dooley, (Way Mistress); Exploits, T. Winsor; Grates, Jas. Jeans; Brooklyn, (Goose Bay), D. Stares; Spaniard's Bay, — Earle; Georges Bay, Joseph LeGrande; Bay of Islands, William Petipas; St. Mary's, Patrick Walsh; Harbor Maine, Mr. Ezekiel; Catalina, William Coleridge; Oderin, James Murphy; Paradise, Patrick Healy; Salmonier, Matthew Carew; Hermitage, M. Frances; Garnish, George Snelgrove; Bay-de-Verds, Charles Blundon; Lamaline, James Pittman; Grand Bank, Jonathan Hickman; Fortune, H. J. Haddon; Holyrood, John Veitch; Topsail, James Moise; Hant's Harbor, William Hussen; Cat's Cove, T. O'Brien; Island Cove, John Crane; Trepassey, E. Devereux; English Harbor, A. Stirling; New Harbor, T. Newhook; LaManche, F. J. Kingwell; Freshwater, J. Pritchett; Salvage, T. Oldford; St. Lawrence, Hugh Vavasor; Rose Blanche, Philip Sorsoliel; Western Bay, Pierce Hanrahan; Tilt Cove, L. N. Gill; Nipper's Harbor, Frederick A. Thomas; Bonne Bay, John R. Roberts; Hearts Content, George Moore; Scilly Cove, Robert Pittman; Herring Neck, Robert Lewis.

POSTAL ROUTES.

Summer—Between St. John's and Portugal Cove, every day, except Sunday and Wednesday, by waggon.

Between Portugal Cove, Brigus, Harbor Grace and Carbonear, by Steamer, tri-weekly; Bay Roberts, weekly. Overland, Topsail, Holyrood and Harbor Maine, weekly.

Winter—Overland, by waggon, from Carbonear, via Topsail, Kelligrews, Holyrood, Harbor Maine, Brigus, Port-Croix, every day; Roberts, Spaniard's Bay and Harbor Grace, four hours after the arrival of the Steamer from Halifax.

Between Carbonear and Grates Cove, (adding a Heart's Content, New Perlican, Hants Harbor and Old Perlican,) weekly by messenger.

Between Carbonar, Blackhead and Bay-de-Verds, weekly, by messenger, calling at intermediate places.

Between New Perleam and Trinity, weekly, by boat.

Between Trinity and Bonavista, and between Trinity and King's Cove, weekly, by messenger.

Between Bonavista and Greenspond, fortnightly, by boat, touching at Salvage.

Between St. John's, Bay-de-Verds, Catalina, King's Cove, Trinity, Bonavista, Greenspond, Fogo, Twillingate, Exploits, Tilt Cove and Nippers Harbor, by Coastal Steamer, fortnightly, on the Thursday after the arrival of the Steamer from Liverpool and Queenstown; and during winter months, Greenspond, overland via Harbor Grace, Spaniard's Bay, New Harbor, Come-by-Chance, Random and Freshwater, on the Monday after arrival of Halifax Steamer.

Between St. John's, Ferryland, Renew's, Trepassey, Burin, St. Pierre, Harbor Briton, Burgeo, La Poile, Rose Blanche and Chunnel, by coastal Steamer, fortnightly in summer and monthly in winter; calling at Fermuse and St. Mary's and Placentia every alternate trip.

Between St. John's, Bay Bulls, Witless Bay, Toads Cove and Ferryland, weekly, by waggon, during summer months, and fortnightly in winter.

*Between Ferryland, Aquaforte and Renew's, fortnightly in summer and monthly in winter, by messenger.

Between St. John's and Placentia, by waggon, on Friday, if the Halifax Steamer is in; if not the Mails will be despatched in four hours after her arrival.

*Between Placentia and St. John's, by waggon, in one hour after the arrival of the Packet Boat from Burin.

*Between Salmonier and St. Mary's, by messenger.

*Between Great and Little Placentia, by messenger.

*Between Great Placentia, LaManche, Sound Island, Harbor Buffett, Red Island, Marasheen and Burgeo, by boat.

*Between Great Placentia and Burin, by boat, touching at Paradise and Odein.

*Between Burin and Garnish, by messenger.

*Between Burin, Corban, Little and Great St. Lawrence, Lamaine, Fortune and Grand Bank, by messenger.

*Between Garnish and Harbor Breton, calling at English Harbor, by boat.

*Between Harbor Breton, Pushthrough, Rencontre, Rameo, Burnt Islands and Petites, by boat.

Besides the above mentioned routes, Mails are made up and despatched by steamer, after arrival of steamer from Halifax.

Routes marked thus * are fortnightly in summer and monthly during winter.

Postage on Letters addressed to the United States, the Dominion of Canada and England, are as follows:

For Letters under $\frac{1}{2}$ oz., 6 cents, and 6 cents for every additional $\frac{1}{2}$ oz.

Letters for the British West Indies, 10 cents per $\frac{1}{2}$ oz., and 10 cents for every additional $\frac{1}{2}$ oz.

Newspapers to United States, the Dominion and West Indies, 2 cents, and to England, 1 cent.

Foreign Newspapers re-mailed for transmission to the Out-ports, are charged one cent each, pre-paid by stamp.

All correspondence addressed to the United Kingdom, United States, the Dominion, New Brunswick, Nova Scotia and Prince Edward's Island must be pre-paid, or it cannot be forwarded.

INLAND POSTAGE.

For letters—Under $\frac{1}{2}$ oz. 3 cents.
Under $\frac{1}{4}$ oz. 6 cents.
3 cts. for every additional $\frac{1}{2}$ oz., pre-paid by stamps.

For book packets, pamphlets, magazines and periodicals, not exceeding three pounds in weight, transmitted by post within the Island are charged 5 cents for every quarter pound of their weight. The Pillar Letter Boxes are cleared at 9 a.m. and 2 p.m., for town delivery, every day, (Sundays excepted) and also, two hours before closing the mail by the Halifax steamer. Newspapers dropped in the Pillar Letter Boxes will not be delivered.

Letters dropped in the Pillar Letter Boxes for Town, are delivered for one cent, pre-paid by stamp; if not pre-paid they are transferred to the Dead Letter Office.

PARCEL POST.

Parcels closed at the ends and sides may be posted at any Post Office in Newfoundland for conveyance to any other Post Office (not Way Office), in the Island, at a rate of Postage subject to the following conditions:—

1—No letter or letters shall be concealed.

2—The parcel shall not contain any explosive substance, glass, liquid or other matter, likely to injure the ordinary contents of the mail, under penalty of forfeiture of the parcel.

3—The weight of the parcel shall not exceed 3 lbs., nor the size exceed one foot in length or breadth, or six inches in thickness.

4—Parcels must be pre-paid at the following rates:—

Under $\frac{1}{4}$ lb. 5 cents.

Over $\frac{1}{4}$ lb. and not exceeding $\frac{1}{2}$ lb. 10 cents.

Over $\frac{1}{2}$ lb. and not exceeding $\frac{3}{4}$ lb. 15 cents.

And so on, adding 5 cents for every $\frac{1}{4}$ lb., or fraction thereof.

5—The parcel may be registered on payment of a fee of five cents in addition to the postage.

6—If the name and address of the sender be written on the parcel, it will, if delivery should fail from any cause, be returned unopened to the sender on payment of an additional rate of 20 cents for the return conveyance.

7—The parcel should have the words "by Parcel Post," plainly written over the address. It should be well and strongly put up, and be legibly addressed to the Post Office address of the intended receiver, including the name of the district in which the Post Office is situated. The following is an example of the mode of address recommended :

BY PARCEL POST.

To _____
 _____ Post Office
 District of _____

Sent by _____
 District of _____

PROHIBITORY CLAUSES.

No written communication shall be enclosed in any circular, periodical, pamphlet, book, book parcel, or parcel for the Parcel Post; and no communication shall be written upon any circular, periodical, pamphlet, book, book package, or parcel.

No letter, or any writing, or any marks to serve the purpose of a letter, shall be written upon or enclosed in any newspaper posted to pass as a newspaper.

Prepaid books, pamphlets and magazines, for Great Britain, are charged the following rates, when exceeding two ounces in weight:

For a packet above 2 ozs. and not exceeding 4 ozs. 6 cents.
 not exceeding 8 ozs. 12 cents.
 over 8 ozs. and not exceeding 1 lb. 24 cents.

And so on, adding 6 cents for every additional 4 ozs., or fraction thereof, when the packet exceeds 2 ozs. in weight.

Books, trade patterns, or samples, and all printed papers, other than newspapers, not exceeding *two ounces in weight*, are forwarded to the United Kingdom at the reduced rate of:

For a packet not exceeding 1 oz. 2 cents.

Above 1 oz. and not exceeding 2 ozs. 4 cents.

Unpaid books for the United Kingdom are forwarded, charged with double the prepaid rates of postage.

Letters for officers serving in H. M. service abroad, are chargeable with the ordinary rates of postage.

Table of Postage Rates on Letters posted in Newfoundland for the following places, via England:

Algeria and France, per $\frac{1}{4}$ oz. 16 cents.

Aleppo, Alexandretta, Jaffa, Portugal, Rhodes, Syria, Tunis, Turkey, (except places specified) Spain, Varna, Canary Islands, 16 cents, others 18 cents per $\frac{1}{4}$ oz.

Belgium, Bremen, Brunswick, Frankfort, Hamburg, Hanover, Hesse, Holland, Lauenberg, Lippe Detmold, Lubeck, Luxemburg, Mecklenburg, Oldenberg, Prussia, Schaumburg, Lippe, Saxony, Switzerland, via Belgium, 12 cents per $\frac{1}{4}$ oz.

Belgrade, 14 cents, Denmark, via Belgium and Faroec Islands, 12 cents per $\frac{1}{4}$ oz.

Africa, (West coast) Alexandria, Alexandretta, via Belgium, Azores, via Southampton, Beyrout, Bonny, Bucharest, Cape Coast Castle, Cape-de-Verds, Candia, Constantinople, via Belgium and Trieste, Egypt, via Southampton, Falkland Islands, Fernando Po, Gambia, Gibraltar, Gold Coast, Goree, Larnica, Liberia, Madeira, Malta, Morocco, Poland, Portugal, via Southampton, Rhodes and Russia, via Belgium, Salonica, Scutarri, Sierra Leone, Smyrna, Suez, Tangier, Tasmania, Tehesme, Tene-

dos, Trebisond, Tripoli, Varna, via Belgium, Hawaiian Islands, via New York, 18 cents per $\frac{1}{2}$ oz.

Galatz, via Belgium, 42 cents per $\frac{1}{2}$ oz., Heligoland, via Hamburg, Ibralia, Jassy, Moldavia, Wallachia, via Belgium, 16 cents per $\frac{1}{2}$ oz.

Greece, 22 cents per $\frac{1}{2}$ oz.

Australia and New Zealand, via Brindisi, 18 cents, Ceylon, 28 cents, India, via Southampton, 24 cents per $\frac{1}{2}$ oz.

Argentine Republic, via New York, 24 cents, Ascension, Borneo, Brazil, Buenos Ayres, Cape of Good Hope, Carthagena, China, via Southampton, Ceylon and India, via Brindisi, Costa Rica, Curacao, Gaudaloupe, Guatemala, Hayti, Honduras, Hong Kong, Japan, Java, Labuan, Mexico, Mosquito, Mont Video, Natal, Nicaragua, Panama, Paraguay, Sandwich Islands, Venezuela, 30 cents, and Vanconvers Island, 6 cents per $\frac{1}{2}$ oz.

Bolivia, Chili, Ecuador, Peru, Salvador, West Coast of South America, 42 cents per $\frac{1}{2}$ oz.

Per Packet, via Halifax, Bermuda, United States, Dominion of Canada, Prince Edward Island, 6 cents, and West Indies, 10 cents per $\frac{1}{2}$ oz.

Rules of Rating Letters by British Packet.

For the United Kingdom, West Indies, Dominion of Canada, P. E. Island, and United States, under $\frac{1}{2}$ oz. one rate; under 1 oz. two rates; under $1\frac{1}{2}$ oz. three rates, and so on, adding one rate for every $\frac{1}{2}$ oz.

Letters posted in Newfoundland for delivery at any place within the Island, are charged 3 cents for every $\frac{1}{2}$ oz., if pre-paid, and 6 cents unpaid.

By the Act 28 Vic., Chap. 2, all letters sent from this Colony, and all local letters deposited in any Post Office in this Colony for delivery or transmission within it, shall be pre-paid by stamps, or otherwise such letters shall be chargeable with double postage to the receiver.

Parties desirous of vending Newfoundland postage stamps, will be allowed a commission of five per cent. Stamps, in all cases, to be paid for in advance.

REGISTRATION.

Any Letters found to contain Coin, as well as having the word "Registered" written upon them, which may be posted in Newfoundland, will be forwarded charged with a double registration fee.

MONEY ORDER BRANCH.

Thomas S. Dwyer, Superintendent.

Office hours—From 9 a.m., to 4 p.m.

Money Orders are now interchanged with the United Kingdom, Dominion of Canada, and P. E. Island, at the following rates of commission:—

Scale for United Kingdom—Orders up to £2 stg., 1s. stg.; from £2, up to £5, 2s.; from £5, up to £7, 3s.; from £7, up to £10, 4s.

Scale for the Provinces—Orders up to £5, 1s.; from £5, to £10,

2s. ; from £10 to £15, 3s. ; and from £15 to £20, 4. No single order can be granted for more than £20. No half-pence to be introduced in the orders.

Business of Money Order Office closes one hour before closing the Mails by the Halifax Steamer.

SYSTEM.

1—Money Orders are made out in forms supplied for the use of the Money Order Offices.

2—Persons applying for Money Orders are recommended to use printed "Application Forms," printed for that purpose.

3—Place of payment of a Money Order may be changed in accordance with instructions provided therefor.

4—Alteration of payee's name may be effected, by issue of a new order and payment or commission thereon.

5—Applicants for Money Orders are expected to observe due care in the examination of the same, relative to filling and stamping ; defect in Orders when presented for payment may cause difficulty and delay, for which the paying office is not to be held accountable.

6—Postmasters should be particularly careful to obtain from the person who presents a Money Order, whether the rightful owner or not, full information as to the christian name, surname, and address of the party who originally obtained it, unless such party be a firm, when the name of the firm will suffice. *The only exception to this rule is—*When an Order is presented through the Bank, in which case it will suffice that the Order, being properly signed, be also crossed with the Banker's name.

7—As however, *after once paying a Money Order, by whomsoever presented, the Office will not be liable to any further claim,* the public are strictly cautioned,—

1st—To take all means to prevent the loss of the Money Order.

2nd—To be careful on taking out an Order, to state correctly the christian as well as the surname of the person in whose favor it is to be drawn.

3rd—To see that the name of the person taking out the Money Order is correctly known to the person in whose favour it is drawn.

8—Payment of a Money Order must be obtained before the end of the sixth calendar month after that in which it was issued, otherwise a new Order will be necessary, for which a second commission will be charged ; and if the order be not paid before the twelfth calendar month after that in which it was issued, all claims to the money will be lost.

Neglect of the foregoing instructions will risk the loss of the money, besides leading to delay and trouble in obtaining payment.

The Money Order Offices, are—General Post Office, St. John's ; Post Offices at Bay Bulls, Bonavista, Briggs, Gargoy, L'Anse-au-Loup, Channel, Carbonear, Ferryland, Fogo, Greenspond, Harbor

Breton, Harbor Grace, Placentia, Trepassey, Trinity, Twillingate.

9.—Postmasters should recommend the use of Money Orders for the transmission of money, in preference to such transmission otherwise.

Suggestions to the Public.

Facility will be given to the Post Office in the discharge of its daily duties, and greater security afforded to the Public, by careful attention to the following recommendations.—

Post all Letters and Newspapers, &c., as early as practicable, especially when sent in large numbers.

When a number of Newspapers are addressed to the same office, put them up in one parcel.

When a number of circulars are posted, tie them up in a bundle, with the addresses all in one direction.

Address letters, papers, &c., in a legible and complete manner, always giving the name of the Post Office; and if there be more than one Post Office of that name, the name of the district in which situated. In case of letters going abroad, the name of the country, as well as of the town and city, should be given in full. Letters, for example, intended for London, England, if simply addressed "London," would be forwarded to London, Canada West, and thus be delayed.

Letters, Papers or Parcels for Outports should have the name of the District, the Post or Way Office, distinctly written as part of the address. For instance, Letters for Bonne Bay, French Shore, are sometimes sent to Bonne Bay, Fortune Bay District, being simply directed Bonne Bay—there are several settlements named Broad Cove, Little Bay, English Harbor, Blackhead, Balline, Caplin Cove, Deer Island, Flat Islands, Fortune, Fox Cove, Freshwater, Island Cove, Long Harbor, Burgeo, New Harbor, Salmon Cove, Seal Cove, Ship Cove, and unless properly directed, are liable to go to wrong office for delivery. The loss and inconvenience arising from imperfect directions, is caused by the carelessness of the sender, and no blame can attach to the Post Office—other places besides those named, have settlements with corresponding appellation, hence the necessity of being particular in addressing all letters, &c.

See that every letter, newspaper, or other packet sent by post, is securely folded and sealed. Every such packet has to be several times handled; and even when in the mail bag, is exposed to pressure and friction. Unless, therefore, the article be light and pliant, it should be enclosed in strong paper, linen, parchment, or some other material which will not readily tear or break.

Fasten the covers of newspapers firmly, so as to prevent them from slipping out.

When dropping a letter or newspaper into a letter-box, always see that the packet falls into the box, and does not stick in its passage.

Never seal letters for the East and West Indies and other hot

climates, with wax. Such a practise is attended with much inconvenience, and frequently with serious injury, in consequence of the melting of the wax, and the adhesion of the letters to each other. In all such cases use wafers or gum, and advise your correspondents in the country referred to, to do the same.

Never send money or other articles of value through the Post Office, except either by means of a money order, or in a registered letter. "Any person who sends money or jewellery in an unregistered letter, not only runs a risk of losing his property, but exposes to temptation every one through whose hands his letter passes, and may be the means of ultimately bringing some clerk or letter carrier to moral ruin." Carefully secure every letter or packet containing money or value, first with gum and afterwards with good sealing-wax, on which mark the clear impression of the seal.

On posting a registered letter or packet, always obtain a receipt for the same at the office where posted.

When letters or papers are delayed or missing, at once communicate the fact to the Postmaster of the division in which is situated the Post Office at which the delay or missing letters were posted. In case of a missing letter enclose value, state the exact contents, the exact address, and the office at which posted; the name of the person by whom posted, and the name of the person by whom received at the office. In the case of a delayed letter or paper, send the cover or wrapper in an entire state, in order that the place of delay may be ascertained by an examination of the post marks.

Trouble and loss occasionally arise out of the carelessness or dishonesty of parties employed in the Post Office service; yet instances are not wanting in which it has been shown to the satisfaction even of the complainants, that the fault at first attributed to the Post Office, in truth rested in other quarters.— Theft by private hands, although very difficult of proof, have not unfrequently been brought to light; and it is greatly to be desired that those who suffer loss should, in the first instance, and while the circumstances are fresh, endeavor to ascertain with the utmost precision all particulars respecting the despatch or receipt of the lost letters or papers, and lose no time in communicating this information to the Postmaster. Indeed, generally speaking, it is only by careful inquiry into minute details that the offender can be detected, whether he be a servant of a Department or not.

The Post Office is a department which admits of constant improvement and expansion. The public, by sending to the Postmaster General, clear and correct information respecting faulty arrangements, may materially benefit the service. It must be remembered, however, that changes in machinery so extensive and intricate as that of the Post Office, must be made cautiously and with much previous consideration.

Time is generally required to carry out any material change in postal arrangements; for even when decided upon, old contracts, requiring notice of termination, may have to be got rid

of, and tenders of new contracts invited by public advertisements, before the decision can take effect.

New Post Offices are established by the Department wherever it is ascertained that a sufficient number of inhabitants can be accommodated, and a sufficient amount of postal revenue collected to warrant such a measure. When a new Post Office is required, a petition should be addressed to the Postmaster General, signed by as many of the inhabitants as can conveniently subscribe the same. The petition should state the name of the settlement and district in which it is desired the office should be established; the distance from the neighboring offices; whether at the sight of the proposed Post Office there is a village; the number of mills, stores, taverns, and houses thereat; the extent of the settlement to be served and the probable cost of the mail; together with any other facts which may form any ground for the accommodation applied for.

Post Office Directory for Newfoundland,

CONTAINING

An Alphabetical List of the Towns, Villages and Settlements in the Colony, with the Post Towns and Way Offices.

POST TOWNS—those marked thus * are Money Order Offices.

NAME OF OFFICE.	DISTRICT.	NAME OF OFFICER.
*Brigus	Port-de-Grave	Mrs. Stantaford
*Bonavista	Bonavista	John Lawrence
*Burin	Burin	Thomas Winter
*Burgeo	Burgeo and La Poile	F. A. Parsons
*Bay Bulls	Ferryland	H. J. Williams
*Carbonear	Carbonear	Nicholas Nicholle
*Fogo	Fogo and Twillingate	James Fitzgerald
Ferryland	Ferryland	John Morry
*Greenspond	Bonavista	William Lang
*Harbor Grace	Harbor Grace	Andrew Drysdale
*Harbor Breton	Fortune Bay	Thomas Birkett
Little Placentia	Placentia and St. Mary's	Alexander Burke
*Placentia	Placentia and St. Mary's	Mrs. H. Bradshaw
*Twillingate	Fogo and Twillingate	Joseph J. Pierce
*Trinity	Trinity	Anne Cross
New Perlican	Trinity	Francis Howell
La Poile	Burgeo and La Poile	Francis Read
*Channel	Burgeo and La Poile	N. J. Smith

Way Offices.

NAME OF OFFICE.	DISTRICT.	WAY OFFICE KEEPER.
Bay Roberts	Port-de-Grave	Eliza Moore
Black Head	Bay-de-Verds	J. C. Moors
Bay-de-Verds	Bay-de-Verds	Charles Blundon
Catalina	Trinity	S. Jeans
Cats Cove	Harbor Main	Thomas O'Brien
Come by Chance	Placentia Bay	A. Blackadar
English Harbor	Fortune Bay	
Fortune	Burin	H. J. Haddon
Freshwater	Bonavista Bay	J. Pritchett
Grand Bank	Burin	Jonathan Hickman
Garnish	Burin	George Snelgrove
Harbor Main	Harbor Main	Mrs. Ezekiel
Hermitage	Fortune Bay	M. Frances
Hants Harbor	Trinity	Mary Hussen
Holyrood	Harbor Main	John Veitch
Island Cove	Harbor Grace	John Crane
King's Cove	Bonavista	Patrick Murphy
Lamaline	Burin	James Pittman
La Manche	Placentia and St. Mary's	T. J. Kingwell
New Harbor	Trinity	Thomas Newhook
Oderin	Placentia and St. Mary's	James Murphy
Old Perlican	Trinity	William Christain
Paradise	Placentia and St. Mary's	Patrick Healy
Port-de-Grave	Port-de-Grave	Matthew O'Rielly
Portugal Cove	St. John's East	Margaret Dooley
Random	Trinity Bay	J. Tilley
Salmonier, North	St. Mary's and Placentia	Matthew Carew
St. Mary's	Placentia and St. Mary's	Patrick Walsh
Topsail	Harbor Main	James Moise
Trepassey	St. Mary's	Elizabeth Devoreux
Western Bay	Bay-de-Verds	Pieree Hanrahan
Salvage	Bonavista	Thomas Oldford
St. Lawrence	Burin	Hugh Vavasor
Rose Blanche	Burgeo and La Poile	P. Sorsoliel
Tilt Cove	Fogo and Twillingate	L. N. Gill
Nipper's Harbor	Fogo and Twillingate	F. A. Thomas
Exploits	Fogo and Twillingate	Thomas Winsor
Grates Cove	Bay-de-Verds	Wm. Meadus
Georges Bay	French Shore, West	Joseph LeGrande
Bay of Islands	French Shore, West	Wm. Pettipass
Brooklyn (Goose Bay)	Bonavista	D. Stares
Spaniard's Bay	Harbor Grace	William Earle
Boone Bay	French Shore, West	J. R. Roberts
Hearts Content	Trinity	George Moore
Scilly Cove	Trinity	James Hiscock
Herring Neck	Twillingate	Robert Lewis

NAME OF OFFICE.	DISTRICT.	WAY OFFICE KEEPER.
Burnt Island	Burgeo and La Poile	Geo. Tweedle
Gooseberry Isl'd.	Bonavista	Thomas Harris
Fortune Harbor	Twillingate	R. M. Hamilton
Fermeuse	Ferryland	Ann Collett
Lower Is'd Cove	Bay-de-Verds	Geo. Cooper
Little Bay Islands	Twillingate	John Campbell
Pushthrough	Fortune Bay	Henry Camp
Petty Harbor	St. John's	Jacob Bishop
Torbay	St. John's	John McGuire
Cupids	Brigus	W. K. Ledrow

Alphabetical List of Towns, Villages and Settlements.

NAME OF PLACES.	DISTRICTS.	POST TOWNS.
Adam's Cove	Bay-de-Verds	Carbonear
Amherst Cove, (Upr)	Bonavista	Trinity
Amherst Cove, (Lor)	do	do
Apsey Cove	Fogo	Fogo
Aquaforte	Ferryland	Ferryland
Admiral's Cove	St. Mary's and Placentia	St. Mary's
Angel's Cove	do do	Placentia
Arnold's Cove	do do	Little Placentia
Ann's Cove	do do	Great Placentia
Belle Isle	St. John's East	Portugal Cove
Balline	do	do
Broad Cove	do	do
Blackhead	St. John's West	St. John's
Broad Cove	Harbor Main	Harbor Main
Bacon Cove	do	Brigus
Burnt Head, (Cupids)	Brigus	do
Broad Cove	do	do
Bull Cove	do	do
Blow-me-Down	do	do
Bareneed	do	do
Brigus	do	do
Bryant's Cove	Harbor Grace	Harbor Grace
Rishop's Cove	do	do
Beachy Cove	do	do
Blow-me-Down	Bay-de-Verds	Carbonear
Broad Cove, (No. S.)	do	do
Blackhead	do	do
Bay-de-Verds	do	do
Boney Brook	do	do
Bird Island Cove	Trinity	Bonavista
Birchey Cove	Bonavista	do
Barrow Harbor	do	do
Back Harbor	Fogo and Twillingate	Twillingate
Broom Close	Trinity	Trinity

NAME OF PLACES.	DISTRICTS.	POST TOWNS.
Bloody Bay	Bonavista	Trinity
Bonavista	do	Bonavista
Bragg's Island	do	Greenspond
Burnt Island	do	do
Bennett's Island	do	do
Bayly's Cove	do	do
Bermoth Island	do	do
Bloody Arm	Fogo	Fogo
Beaver Cove	do	Tilt Cove
Bard Islands	do	Fogo
Blackhead Cove	do	do
Black Island	do	Exploits
Burnt Bay	do	do
Birchy Bay	do	do
Bet's Cove	do	Fogo
Bay Bulls	Ferryland	Bay Bulls
Burnt Cove	do	do
Balline (South)	do	do
Brigus (South)	do	Ferryland
Biscay Bay	Placentia and St. Mary's	Trepassey
Barisway	St. Mary's	St. Mary's
Beckford C. Shore	Placentia and St. Mary's	Placentia
Branch	Placentia	do
Bordeaux	do	Little Placentia
Black River	do	do
Green Island	do	do
Bett's Hole	do	do
Burgeo	do	do
Bona	do	Great Placentia
Burnt Islands	do	do
Bane Harbor	do	do
Beau Bois	Burin	Burin
Burin	do	do
Brunet Island	Fortune Bay	Harbor Breton
Bay de East	do	English Harbor
Bay de North	do	do
Rock Side Cove	Trinity	Trinity
British Harbor	do	do
Black Duck Cove	do	do
Boun's Dear Cove	do	do
Broad Cove	do	do
Barrow	Fortune Bay	English Harbor
Belloram	do	do
Blue Pinion	do	do
Bay L'Argent	do	do
Ball Bay	do	do
Banburgh's Cove	do	do
Boxy	do	Harbor Breton
Blanchett	do	do
Bay de Leau	do	do

NAME OF PLACES.	DISTRICT.	POST TOWNS.
Brimball's Head	Fortune Bay	Harbor Breton
Bonne Bay	do	do
Brimball's Store House	La Poile	Burgeo
Burgeo (Upper)	do	do
Burgeo	Placentia and St. Mary's	Little Placentia
Burgeo (Lower)	La Poile	Burgeo
By zils	do	Rose Blanche
Baker's Tickle	do	do
Burnt Islands	do	do
Brent's Cove	do	do
Bede Cove	do	do
Bear Cove	do	do
Cape Spear	St. John's East	St. John's
Chamberlain	Harbor Main	do
Chapel's Cove	do	Harbor Main
Cats Cove	Harbor Main	do
Cow Head	Fogo and Twillingate	Twillingate
Colliers	Harbor Main	Brigus
Cupids	Brigus	do
Caplin Cove	do	do
Clark's Beach	do	do
Centre Harbor	Harbor Grace	Harbor Grace
Coosh	do	do
Coley's Point	do	Brigus
Carbonear	Carbonear	Carbonear
Cloun's Cove	Bay-de-Verds	do
Caplin Cove	do	do
Chapel Arm	Trinity	Harbor Grace
Chance Cove	do	do
Cat Cove	do	Trinity
Cuckold's Cove	do	do
Catalina	do	do
Careless Harbor	do	do
Castle Cove	do	do
Cottrell's Island	Bonavista	Greenspond
Cobbler's Island	do	do
Cape Island	do	do
Cape Freels	do	do
Cat Harbor	Fogo	do
Can Island	do	Fogo
Cape Fogo	do	do
Change Islands	do	do
Caplin Cove	do	Tilt Cove
Caplin Bay	Ferryland	Ferryland
Cape Broyle	do	Bay Bulls
Cape Race	St. Mary's and Placentia	Trepassey
Cape Pine	do	do
Colinet	do	St. Mary's
Cape Dog	do	do
Cuslett	do	Great Placentia

NAME OF PLACES.	DISTRICT.	POST TOWNS.
Clattice Harbor	St. Mary's and Placentia	Great Placentia
Corbin	Burin	Burin
Conn	Fortune Bay	Harbor Breton
Cinque Serf	La Poile	Rose Blanche
Corbon	do	English Harbor
Con Harbor	do	Harbor Breton
Corbon	do	do
Coomb's Cove	do	do
Cannaigre Bay	do	do
Cul de Sac	do	do
Cape La Have	do	do
Coppett	do	Burgeo
Cotteau	do	do
Channel	Burgeo and La Poile	Channel
Dock port de Grave	Brigus	Brigus
Dock Point	Harbor Grace	Harbor Grace
Daniel's Cove	Trinity	Carbonear
Dildo Cove	do	Harbor Grace
Deer Island	Bonavista	Greenspond
Dead Man's Bay	Fogo and Twillingate	do
Doting Cove	do do	do
Dog Bay	do do	Twillingate
Distress	Placentia and St. Mary's	Placentia
Dog Harbor	do do	Little Placentia
Davis's Cove	do do	do
Duricile	Burin	Burin
Dawson's Cove	Fortune Bay	Harbor Breton
Despair Bay	do	do
Doctor's Harbor	do	English Harbor
Dragon Bay	Burgeo and La Poile	Harbor Breton
Deer Island	do do	Burgeo
English Harbor	Trinity	Trinity
Exploits, Burnt Island	Fogo and Twillingate	Exploits
English Harbor	Fortune Bay	Harbor Breton
English Harbor, { near Belloram }	do	English Harbor
Eastern Point	Burgeo and LaPoile	La Poile
Flat Rock, Torbay	St. John's East	St. John's
Freshwater	do do	do
Fox Trap	Harbor Main	do Topsail
Freshwater	Bay-de-Verds	Carbonear
Fox Harbor	Trinity	Trinity
Friday's Cove	do	do
Fool's Island	do	do
Freshwater Bay	Bonavista	Greenspond
Flat Island	do	Bonavista
Flower Island	do	Greenspond
Fair Island	do	do
Fogo Har. and Island	Fogo and Twillingate	Fogo
Fortune Harbor	do do	Exploits

NAME OF PLACES.	DISTRICTS.	POST TOWNS.
Flurry's Bite	Fogo and Twillingate	Exploits
Ferryland	Ferryland	Ferryland
Ferneuse	do	do
Fox Harbor	Placentia and St. Mary's	Little Placentia
First Beach & Fresh'tr	do do	Great Placentia
Flat Island	Burin	do
Fox Cove	do	Burin
Fortune	do	do
Forn	Fortune Bay	Harbor Breton
Furby's Cove	do	do
Fox Island Harbor	do	Burgeo
Francois	Burgeo and LaPoile	Burin
Frenchman's Cove	Burin	do
Gullies (Upper)	Harbor Main	Topsail
Gullies (Lower)	do	do
Gasters	do	do
Gullies and Goulds	Brigus	Brigus
Grate's Cove	Bay-de-Verds	Carbouear
Green Harbor	Trinity	Harbor Grace
Gooseberry Cove	do	do
Ganny Cove	do	do
Green Bay	do	Trinity
Green Island Cove	do	do
Gooseberry Island	Greenspond	Bonavista
Greenspond & Tickle	do	Greenspond
Grant's Island	do	do
Gander Bay	Fogo and Twillingate	Fogo
Grapes Cove	do do	do
Goulds (Bay Bulls)	St. John's West	St. John's
Gaskier	St. Mary's and Placentia	St. Mary's
Gull Cove	Placentia and St. Mary's	Placentia
Golden Bay	do do	do
Gooseberry	do do	do
Grandy's Point	do do	do
Gallows Harbor	do do	Great Placentia
Golds Cove	Burin	Burin
Grand Bank	do	do
Grand Beach	do	do
Garnish	Fortune Bay	do
Grand John	do	Harbor Breton
Grant's Cove	do	do
Great Harbor	do	do
Grole	do	do
Gripe Island	do	do
Gaultois	do	do
Great Jervois	do	do
Grandy's Brook	do	Burgeo
Gana	Burgeo and LaPoile	La Poile
Gull Island	Fogo and Twillingate	Twillingate
Horse Cove	Conception Bay	Portugal Cove

NAME OF PLACES.	DISTRICTS.	POST TOWNS.
Holyrood, Nor. & S th	Harbor Main	St. John's
Harbor Main	do	Harbor Main
Hiall's Town	Port-de-Grave	Brigus
Hibb's Hole	do	do
Harbor Grace	Harbor Grace	Harbor Grace
Hant's Harbor	Trinity	Carbonear
Heart's Disease	do	do
Heart's Delight	do	do
Heart's Content	do	do
Heart's Ease	do	do
Hare Bay	Fogo and Twillingate	Fogo
Harbor Island	do do	do
Herring Neck	do do	Twillingate
Hall's Bay	do do	do
Holyrood, pond	St. Mary's and Placentia	St. Mary's
Harry Cove	do do	Salmonier
Harbor Buffett	do do	Little Placentia
Hay Stack	do do	do
Harbor Mille	Fortune Bay	Harbor Breton
Hare Harbor	do	do
Harbor Breton	do	do
Hermitage Cove	do	do
Harry's Cove	do	do
Harbor Gulley	do	do
Hatter's Point	Burgeo and La Poile	Burgeo
Harbor Le Cou	do do	Rose Blanche
Hiscock's Point	do do	do
Island Cove	Harbor Grace	Harbor Grace
Island Cove (Lower)	Bay-de-Verds	Carbonear
Island Cove	Trinity	do
Ireland's Eye	do	Trinity
Indian Arm	Bonavista	Bonavista
Indian Bay	do	do
Indian Islands	Fogo and Twillingate	Fogo
Indian Cove	do do	Exploits
Isle of Valen	Placentia and St. Mary's	Great Placentia
Isle of Glue	Fortune Bay	English Harbor
Isle de Mort	Burgeo and LaPoile	Rose Blanche
Juniper Stump	Port-de-Grave	Brigus
Juggler's Cove	Harbor Grace	Harbor Grace
Job's Cove	Bay-de-Verds	Carbonear
Joe Batt's Arm	Fogo and Twillingate	Fogo
Jackson's Arm	do do	Nippers Harbor
John's Pond	St. Mary's and Placentia	St. Mary's
Jigging Hole	Trinity	Trinity
Jean de Bay	Burin	Burin
Jack Fountain	Fortune Bay	Harbor Breton
Jersey Harbor	do	do
Kelligrews	Conception Bay	St. John's, Topsail
Kerley's Harbor	Trinity	Trinity

NAME OF PLACES.	DISTRICTS.	POST TOWNS.
Knicht's Cove	Trinity	Trinity
King's Cove	Bonavista	King's Cove
Keel's	do	do
King's Cove	Fogo and Twillingate	Tilt Cove
King's Harbor	Burgeo and La Poile	La Poile
Logy Bay	St. John's East	St. John's
Long Pond	Harbor Main	do Topsail
Lance Cove	do	do do
Long Beach	Port-de-Grave	Brigus
Lower Small Point	Bay-de-Verds	Carboncar
Low Point	do	do
Lance Cove	Trinity	do
Lower Amherst Cove	Bonavista	Bonavista
Lion's Den	Fogo and Twillingate	Fogo
Loon Bay	do do	Exploits
Leading Tickle	do do	do
Little Bay Island	do do	Nippers Harbor
Little Island	St. Mary's	St. Mary's
Little Salmonier	do	Salmonier
Lear's Cove	Placentia and St. Mary's	Great Placentia
Little Placentia	do do	Little Placentia
LaManche	do do	do
Little Harbor	do do	do
Little Bay	Burin	Burin
Lawn	do	do
Lamaline	do	Lamaline
Lounge de Serf	Fortune Bay	Harbor Breton
Lobster Cove	do	do
Lolly Cove	do	English Harbor
Little Bay	do	do
Little Bay	Fogo and Twillingate	Nippers Harbor
Lambell's Passage	Fortune Bay	Harbor Breton
Little River	do	do
Little Bay—LaPoile	Burgeo and LaPoile	La Poile
LaPoile	do do	do
LaPlante	do do	do
Maddox Cove	St. John's West	St. John's
Middle Bight	Harbor Main	Topsail
Manuel's	do	do
Middle Arm	do	Harbor Main
Middle Cove	St. John's East	St. John's
Mercer's Cove	Harbor Grace	Harbor Grace
Mosquito	Carboncar	Carboncar
Marshall's Folly	Bay-de-Verds	do
Mulley's Cove	do	do
Muddy Hole	Fogo and Twillingate	Fogo
Merriott's Harbor	do do	Twillingate
Moreton's Harbor	do do	do
Mause Point	do do	do
Mobile	Ferryland	Bay Bulls

NAME OF PLACES.	DISTRICTS.	POST TOWNS.
Mosquito Island	St. Mary's and Placentia	St. Mary's
Mall Bay	do do	do
Mother Ixx's	do do	do
Middle House	do do	St. John's
Muzzle Pond	do do	St. Mary's
Marguise	do do	Little Placentia
Muzzle Harbor	do do	do
Merasheen	do do	do
Mahoney's Cove	do do	Great Placentia
Murphy's Cove	do do	do
Mortier Bay	Burin	Burin
Molyers & Barrisway	do	do
Mose Ambrose	Fortune Bay	Harbor Breton
Miller's Passage	do	do
Mosquito	Burgeo and LaPoile	Burgeo
Moon's Face	do do	La Poile
Margarec	do do	do
Northern Gut	Port-de-Grave	Brigus
New Perlican	Trinity	Carboncar
New Harbor	do	Harbor Grace
New Bonaventure	do	Trinity
Norman's Cove	do	Harbor Graco
New Harbor	do	do
Newell's Island	Greenspond	Greenspond
Newman's Cove	Bonavista	Bonavista
Noggin Cove	Fogo and Twillingate	Fogo
New Bay	do do	Exploits
Nimrod	do do	do
Nipper's Harbor	do do	Nippers Harbor
North Harbor	St. Mary's and Placentia	St. Mary's
North Harbor	do do	Little Placentia
New Harbor	Fortune Bay	Harbor Breton
New Harbor	Burgeo and La Poile	Burgeo
Outer Cove	St. John's East	St. John's
Otterbury	Bay-de-Verds	Carboncar
Ochre Pit Cove	do	do
Old Perlican	Trinity	do
Old Shop	do	Harbor Grace
Old Bonaventure	do	Trinity
Open Hall	Bonavista	do
Oliver's Cove	Placentia and St. Mary's	Placentia
Oderin	do do	do
Old Man's Bay	Burgeo and La Poile	Burgeo
Pass Island	Fortune Bay	Harbor Breton
Pouch Cove	St. John's East	St. John's, Torbay
Portugal Cove	do	do Por'l. Cove
Petty Harbor	do West	do
Port-de-Grave	Port-de-Grave	Brigus
Perry's Cove	Bay-de-Verds	Carboncar
Plate Cove	Bonavista	Trinity

NAME OF PLACES.	DISTRICTS.	POST TOWNS.
Pouch Cove	Bonavista	Bonavista
Pool's Island	Greenspond	Greenspond
Pinehard's Island	do	do
Pig Island	do	do
Pond Head	do	do
Portugal Cove	St. Mary's and Placentia	Trepassey
Point La Haye	do do	St. Marys
Patrick's Cove	do do	Great Placentia
Point Verd	do do	do
Placentia (Great)	Placentia and St. Mary's	do
Placentia (Little)	do do	Little Placentia
Point Mall	do do	do
Presque	do do	Great Placentia
Paradise (Great)	do do	do
Paradise (Little)	do do	do
Paradise Sound	do do	do
Petit Ford	do do	do
Pickarce	Fortune Bay	Harbor Breton
Petites	Burgeo and LaPoile	Rose Blanche
Quidi Vldi	St. John's East	St. John's
Rip Rap	Port-de-Grave	Brigus
Red Head Cove	Bay-de-Verds	Carbonear
Random Sound	Trinity	Trinity
Rider's Harbor	do	do
Russel's Cove	Carbonear	Carbonear
Ragged Harbor	Fogo and Twillingate	Fogo
Ragged Harbor	Trinity	Trinity
Red Cliff Island	Bonavista	do
Round Harbor	Fogo and Twillingate	Tilt Cove
Renews	Ferryland	Ferryland
Rams Island	Placentia and St. Mary's	Little Placentia
Red Island	do do	do
Ragged Islands	do do	do
Rushooner's Harbor	do do	do
Red Harbor	Burin	Burin
Rund's Cove	Trinity	Carbonear
Rock Harbor	Burin	Burin
Reneontre	Fortune Bay	Harbor Breton
Round Cove	do	do
Raymond Island	do	do
Round Harbor	do	do
Richard's Harbor	Burgeo and LaPoile	do
Reneontre	do do	do
Rameo	do do	Burgeo
Red Island	do do	do
Rock Harbor, West	do do	do
Rotto	do do	La Poile
Rose Blanche	do do	Rose Blanche
Seal's Cove	Harbor Main	St. John's, Topsail
Salmon Cove	do	Harbor Main

NAME OF PLACES.	DISTRICTS.	POST TOWNS.
Salmon Cove (S. Gut)	Port-de-Grave	Brigus
Ship Cove	do	do
Sandy Cove	do	do
Spaniard's Bay	Harbor Grace	Harbor Grace
Salmon Cove Head	Bay-de-Verds	Carbonear
Spout Cove	do	do
Selly's Cove	Trinity	do
Seal Cove	do	do
Shoal Harbor	do	Trinity
Still Down	do	do
Selby's Cove	do	do
Spaniard's Bay	do	do
Ship Cove	do	do
Salmon Cove	do	do
Spillard's Cove	do	Bonavista
Stock's Cove	Bonavista	do
Sandy Cove	do	do
Salvage	do	do
Shoe Cove	Greenspond	Greenspond
Swain's Island	do	do
Ship Island	do	do
Seldom-come-by	Fogo and Twillingate	Fogo
Shoal Bay	do do	do
Stocking Harbor	do do	Nippers Harbor
Snook's Arm	do do	Tilt Cove
Shoe Cove	do do	do
St. Shot's	Placentia and St. Mary's	Trepassey
St. John's	St. John's	St. John's
Ship Cove	Placentia and St. Mary's	Great Placentia
St. Lawrence (Great)	Burin	Burin
St. Lawrence (Little)	do	do
Spencer's Cove	Placentia and St. Mary's	Little Placentia
Seeveley's Cove	do do	do
Southern Harbor	do do	do
Sandy Harbor	do do	Great Placentia
St. Kyran's	do do	do
South East Bite	do do	do
Spanish Room	Burin	Burin
Sagona Island	Fortune Bay	Harbor Breton
Stones Cove	do	do
St. Jacques	do	do
S. W. Bainsway	do	do
Sam Hitches	do	do
Southern Harbor	do	English Harbor
Swoir Cove	Burgeo and La Poile	Burgeo
Seal Island Harbor	do do	La Poile
Topsail	Harbor Main	St. John's, Topsail
Turk's Gut	Port-de-Grave	Brigus
Turk's Cove	Trinity	Carbonear
Tickle Harbor	do	Harbor Grace

NAME OF PLACES	DISTRICTS.	POST TOWNS.
Trinity	Trinity	Trinity
Trouty	do	do
Thoroughfare	do	do
Tilton Harbor	Fogo and Twillingate	Fogo
Three Arms	do do	Nippers Harbor
Twillingate	do do	Twillingate
Tory Town	do do	do
Tizzard's Harbor	do do	do
Tilt Cove	do do	Tilt Cove
Triton Islands	do do	Exploits
Torbay	St. John's East	St. John's
Trepassey	St. Mary's and Placentia	Placentia
Tack's Beach	do do	Little Placentia
Toselo	do do	Great Placentia
The Brook	Fortune Bay	English Harbor
Turnip Cove	do	do
The Reach	do	do
Upper Small Point	Bay-de-Verds	Carbonear
Upper Amherst Cove	Bonavista	Bonavista
Virgin's Cove	Placentia and St. Mary's	Little Placentia
Victoria Town	Bonavista	Bonavista
Vitter's Cove	Trinity	Trinity
White Monday Hill	Harbor Grace	Harbor Grace
Western Bay	Bay-de-Verds	Carbonear
White Point	Trinity	Trinity
Witless Bay	do	do
Warren's Harbor	Bonavista	Bonavista
West'n Arm, Rocky B'y	Fogo and Twillingate	Fogo
Western Head	do do	Twillingate
Wild Cove, S. -come-by	do do	Fogo
Ward's Harbor	do do	Exploits
Waldron's Cove	do do	do
Witless Bay	Ferryland	Bay Bulls
Woody Island	Placentia and St. Mary's	Little Placentia
Wreck Island	Burgeo and La Poile	Burgeo
Western Point	do do	LaPoile
La Croix	Fogo and Twillingate	Tilt Cove
Brien's Cove	do do	do
Pacquet	do do	do
Mings	do do	do
Coachman's Cove	do do	do
Flower de Louis	do do	do
Lock Drawer	do do	do
Seal Cove	do do	do
Hawling Point or } Bears Cove }	do do	do

Commissioners of Wrecked Property.

Placentia and St. Mary's, George Simms, jr. District of Burin, George Bishop. Channel, W. S. Green. LaPoile, Thomas Read. Burgeo, Francis Parsons. Placentia, James E. Croucher. St. Mary's, Adam J. McKen. Ferryland, Pierce Mallowney and W. W. Carter. Bay-de-Verds, John Lewis. Trinity, South, James L. Mews. Trinity North, John Millen. Greenspond, John T. Oakley. Fogo, James Fitzgerald. Twillingate, Thomas Peyton. Fortune Bay, Thomas Birkett. Conception Bay, G. W. R. Hierlihy. St. John's, T. G. Morry. Labrador, Robert H. Ellis. Point May to Garnish, Joseph G. Haddock. Point May to Lawn Point, Henry Bemung. Cape Race to St. Peter's River, Henry Pennel, Augustus Simms. Cape Bonaventure to Salvage, Michael Murphy.

Commissioners of Pilots.

Chairman—John Goodridge, Esq.; Hon. R. Thorborn, Capt. Cleary, Lewis Tessier and Allan Goodridge.

Judicial Department.

SUPREME COURT.

Chief Justice—Sir Hugh W. Hoyles, Knight.

Assistant Judges—Honorable Bryan Robinson and John Hayward.

Attorney General—Honorable F. B. T. Carter.

Queen's Counsel—Hon. George H. Emerson, Hon. Fred. B. T. Carter, Hon. W. V. Whiteway, R. J. Pinsent, P. Emerson and J. I. Little.

Chief Clerk and Registrar Supreme Court—H. T. B. Wood, acting.

Chief Clerk and Registrar Supreme Court on Northern Circuit—Lewis W. Emerson.

Clerk of Supreme Court on Southern Circuit—Robert John Parsons, jr.

Registrar Southern District—Henry T. B. Wood.

Crier of the Supreme Court and Tipstaff—John Burke.

Barristers and Attorneys of the Supreme Court at St. John's, according to Seniority, exclusive of Attorney and Solicitor Generals and Queen's Counsel—John S. Stephens, Robert R. W. Lilly, Thomas J. Kough, Augustus O'Hayward, D. W. Prowse, Michael J. O'Mara, Prescott Emerson, Robert J. Kent, Henry T. B. Wood, Robert J. Parsons, jr., James S. Winter, Alexander J. W. McNily, B.A., John H. Boone, D. J. Brown, D. J. Greene, R. Raftus, J. G. Conroy, P. J. Scott, T. F. Walsh.

Barristers and Attorneys Northern District—Henry A. Clift, William O. Wood, Harbor Grace.

Attorneys at Law—Robert R. Holden, Stanley B. Carter.

Law Society Benchers—Hon. Solicitor General, Treasurer; ———, Secretary; Hon. Attorney General, J. I. Little, Thomas J. Kough. Librarian, L. T. Chancey.

Sheriffs—Central District, Thomas Talbot; Sub-Sheriff, Lionel T. Chancey. Northern District, John Bemister. Southern District, Edmund Hanrahan; Deputy Sheriff for District of Burgeo and LaPoile, Frederick Cox.

Masters-in-Chancery—Hon. George H. Emerson, Thomas J. Kough, Robert J. Pinsent, Hon. W. V. Whiteway.

VICE-ADMIRALTY COURT.

Judge—The Chief Justice for the time being.

Registrar—R. R. W. Lilly.

Marshall—James Bayly.

Surrogates—Henry T. B. Wood, and D. W. Prowse, St. John's. Lewis W. Emerson, Harbor Grace.

COURT OF CIVIL AND CRIMINAL JURISDICTION FOR LABRADOR.

Judge—Israel L. McNeil, acting.

Bailiff—Jonas Purchase.

This Court is held during the summer months on the coast of Labrador. The Judge is ex-officio a Magistrate and Coroner.

CENTRAL DISTRICT COURT.

Judges—D. W. Prowse and Henry Renouf.

Clerk of the Court—R. R. W. Lilly.

Supreme Court—Spring Term commencing 20th May, to continue three weeks, Autumn Term 20th November, and to continue three weeks: with power to the Judges to prolong the term from day to day, not exceeding six days in all.

Sessions after Term—The first Monday in February, March, April and July, and to continue for a period not exceeding six days.

Commissioners for Issuing Mesne and Final Process and Subpœnas returnable into the Supreme and Circuit Courts, for taking Affidavits and Recognizance of bail in any Suit pending in said Courts.

Central District—Henry T. B. Wood and George R. Lilly, St. John's.

Northern District—Lewis W. Emerson, David Rodgers, Harbor Grace. Isreal McNeil, Carbonear. John C. Nuttall, John Wilcox, Brigus. John Louis, Lower Island Cove. G. W. R. Hierlihy, Bay Roberts. William Holden, Harbor Main. James L. Mews, Hants Harbor. William Christian, Old Perlican. Rev. G. Gardner, Hearts Content. William S. Green and Gilbert H. Cole, Trinity. Alexander Bremner, Catalina. John Lawrence, Bonavista. John T. Oakley, William Lang, Greenspond. James Fitzgerald, Fogo. John Peyton, Twillingate. ———, King's Cove. John M. Maddock, Port-de-Grave. Israel L. McNeil, Labrador.

Southern District—Edmund Hanrahan, and David H. O'Mara,

Ferryland. Adam J. McKen, Placentia. — — — —, Harbor Buffett. — — — —, Port aux Basque. James Pittman, Laminine. George Simms, Grand Bank. Francis A. Parsons, Burgeo. Thomas Rirkett, Harbor Breton. James Moran, Thomas Winter, Burin. Nelson Bailie, Oderin. James P. LeGros, Petites. Geo. Sutton, Trepassey. Thomas Driscoll, Toads Cove. Henry Camp, Pushthrough.

STIPENDIARY MAGISTRATES.

St. John's—Daniel Woodley Prowse and Henry Renouf, Judges Central District Court.

Conception Bay—Thomas R. Bennett, District Judge, Harbor Grace. Israel L. McNeil, Carbonear. John Wilcox, Brigus.

Trinity Bay—Gilbert H. Cole, Trinity. James L. Mews, Old Perlican.

Bonavista—David Candow.

Fogo—James Fitzgerald.

Twillingate—John Peyton.

Ferryland—David W. O'Mara.

Placentia and St. Mary's—Adam J. McKen, Placentia. Thomas P. O'Donnell, St. Mary's.

Burin—James Moran.

Grand Bank—George Simms.

Fortune Bay—Thomas Birkett, Harbor Breton.

Burgeo—John Jordan.

JUSTICES OF THE PEACE.

For the Colony of Newfoundland—The Judges of the Supreme Court, the Members of the Executive Council, and Hon. Ambrose Shea, Edmund Hanrahan, Hon. Edward D. Shea, James J. Rogerson, Daniel W. Prowse, R. R. W. Lilly, Paul Carty, Henry Renouf.

Central District—Hon. Stephen Rendell, Hon. John Winter.

Northern District—John Peyton, John T. Oakley, John Tilley, James L. Mews, Alexander Bremner, John G. Skelton, John Munn, William H. Ridley, David Candow, William S. Green, John Rorke, James L. Prendergast, John Wilcox, Philip Levesconte, James Fitzgerald, Lewis W. Emerson, Israel L. McNeil, John Lewis, Reuben Bemister, George Skelton, James Acock, William Stirling, Joseph J. Pearce, Nathan Norman, William Lang, William Holden, Hay Findlater, John Sheehan, William P. Taylor, Gilbert H. Cole, John W. Owen, George W. R. Hierlihy, Edward Thomas Pike, Alexander W. Bremner, George C. Rutherford, Patrick Nowlan, James Tarahan, John M. Maddock, Benjamin T. H. Gould, Michael Dwyer, Hon. William J. S. Donnelly, James Burden, James Winsor, Charles Furey, John Bartlett, John Milten, Samuel Evans, James Murphy, William Lethbridge, Ellis Cornish Watson, James Gardner, Daniel Green, William Meadus, John S. Lock-

yer, Alexander McMillan, Thomas Winsor, Michael Bolger, George Vardy, Charles Dawe, James Alexander, M.D., Dr. R. White, Thomas C. Duder, James H. Watson, Frederick White, Daniel Murphy, John Smith, George Gushue.

Southern District—Thomas Renouf, Edward Evans, Francis Berteau, Owen Pine, Richard Marshall, Patrick Furlong, Thomas Winter, Philip Sorsoliel, John W. English, Thomas Birkett, John Jordan, Richard McGrath, Philip Holman, Thomas R. Keats, Francis Read, Thos. O'Rielly, James Pittman, Henry Benning, John White, Michael Gorman, Adam J. McKen, John Furneaux, Thomas Driscoll, Charles E. Cossman, David W. O'Mara, Edward C. Gallop.

Labrador—Nathan Norman, Thomas R. Crockwell, Donald A. Smith, William B. Bendell, Sampson Dawe, Thomas G. Larmour, George Goodridge.

CLERKS OF THE PEACE.

St. John's—(For Central District)—Robert R. W. Lilly.—Harbor Grace—John Fennell. Carbonear—Jos. Mackay. Brigus—John C. Nuttall. Trinity—W. S. Green, J.P. Bonavista—John Lawrence. Twillingate—Aaron A. Pearce.

CORONERS.

St. John's, Charles, H. Renouf, M.D. Harbor Grace, Thomas R. Bennett. Bay-de-Verds, John Lewis. Trinity, Dr. R. White. Bonavista, John Lawrence. District of Twillingate and Fogo, James Fitzgerald. Hermitage Bay, Dr. Bruorton. Burgeo and LaPoile, Dr. Brown. South Side of Trinity Bay, and from Split Point to Caplin Cove Brook in Conception Bay, James L. Mews. Brigus, John Wilcox. Trinity Bay, South Side, from Seilly Cove, West, James Gardner. Carbonear and thence to Penny's Cove, Israel L. McNeil. Ferryland (North), Lawrence Fortune. Channel, Dr. T. Jacobs.

CONSTABULARY.

Inspector and General Superintendent of Constabulary for Newfoundland—Paul Carty. St. John's—Acting Sub-Inspector—James Kenna. Cavalry Head Constable—John R. McCowan. Head Constable—John Nicol. Infantry Sergeants—Patrick Goady, Edward Doyle, John Sullivan and George Winslow. Acting Sergeant—Michael Kearney. Medical Attendant—Dr. Crowley.

Harbor Grace—Head Constable—Luke Fallon. Sergeant—Frederick Williams.

Carbonear—Sergeants—Peter McBaie and Matthew McKee.

Twillingate—Sergeant Wells, acting.

Brigus—Sergeant Jackson, acting.

INSPECTORS OF WEIGHTS AND MEASURES.

Thomas Brien, St. John's. John Bruce, Harbor Grace. Peter McBaie, Carbonear. William Horwood, Brigus. John Mifflin, Ragged Harbor to Spiller's Cove, inclusive, (District of Trinity).

William Harding, District of Burin. Henry Camp, from Pass Island to Cape LeHune, District of Burgeo. John Lawrence, Bonavista South. Charles Harris, Gooseberry and adjacent Islands. G. W. R. Hierlihy, Bay Roberts. William D. Cross, North Side of Trinity Bay. John G. Lucas, Fogo. Marmaduke Clow, District of Ferryland. Albert Stirling, District of Fortune Bay. Frederick Wyatt, Greenspond. L. Mills, Grand Bank. James Peyton, Twillingate. John Coffin, King's Cove. John Collis, Trinity. Charles Randall, Hearts Content. Edward O'Brien, Harbor Main. Thomas E. Collett, Harbor Buffett.

Savings' Bank.

Governors—Five members of the House of Assembly and three members of the Legislative Council, viz :—

Hon. F. B. T. Carter, Hon. James. J. Rogerson, Hon. Ambrose Shea, Hon. W. V. Whiteway and the Hon. the Speaker of the House of Assembly. Honorables Nicholas Stabb, Edward White and W. J. S. Donnelly of the Council.

Directors—Hon. F. B. T. Carter, Hon. Nicholas Stabb and Hon. Ambrose Shea.

Cashier—Hon. Edward Morris.

The Bank is open every Monday between the hours of 12 and 2 o'clock, for depositors' business.

BRANCH BANK—HARBOR GRACE.

Cashier and Clerk—Alexander Clift.

Board of Health.

Health Officers—Henry Shea, M.D., and Thomas Howley, M.D., St. John's. William Allan, M.D., Harbor Grace. Francis Moran, M.D., Burin. William Stirling, M.D., Twillingate. Hay Findlater, M.D., Fogo. Robert White, M.D., Trinity. Roland M. Nelson, Carbonear. Dr. Fitzgerald, Fortune Bay. Dr. A. Robillard, Channel. Dr. Anderson, Brigus and Port-de-Grave. Dr. Skelton, Greenspond. Dr. Alexander, Tilt Cove. Dr. T. Jacobs, Channel.

Board of Health and Health Wardens for the Town and District of St. John's—Major Renouf, Chairman; Hon. A. W. Harvey, J. I. Little, Hon. R. Thorburn, Henry Shea, M.D., (Health officer), Wm. Simms, M.D., Stephen Rendell, Lewis Tessier, James B. Wood, W. P. Walsh, T. R. Smith, R. H. Prowse, R. R. W. Lilly, (Secretary), Charles H. Renouf, M.D., Frederick Bunting, M.D., Charles Crowdy, M.D., Thomas Howley, M.D.

Board of Health, Harbor Grace—Israel L. McNeil, William Allan, John Munn, Thomas H. Ridley, Hon. W. J. S. Donnelly, James L. Prendergast, Geo. Rutherford and Lewis W. Emerson.

Board of Health, Carbonear—John Burke, Edward T. Pike, B. T. H. Gould, Michael Bolger, William P. Taylor, Israel L. McNeil, Dr. Nelson and Michael Dwyer.

Medical Officer to Board of Trade for sick seamen, Port of St. John's—William C. Simms, M.D.

Notaries Public.

St. John's—Hon. George H. Emerson, Robert H. Prowse, G. F. Bown, Hon. Fred. B. T. Carter, Robert R. W. Lilly, Hon. E. Morris, William H. Marc, Thomas J. Kough, Hon. W. V. White-way, Hon. Nicholas Stabb, Robert J. Pinsent, Richard B. Holden, Augustus O. Hayward, James S. Winter, Robert J. Parsons, jr., John H. Boone, A. J. W. McNeily, John T. Gillard, Daniel J. Green, John Maher, John A. Rochfort.

Harbor Grace—Lewis W. Emerson, H. A. Clift, William O. Wood. Carbonear, Israel L. McNeil. Twillingate, John Peyton. Bay Roberts, G. W. R. Hierlihy. Burin, Francis Bertean. Fogo, James Fitzgerald. Brigus, George Gushue.

Queen's Printer.

John Collier Withers, Esquire.

Educational Institutions.

ST. JOHN'S ACADEMY.

Directors—Church of England Board—Right Rev. the Lord Bishop, Hon. the Chief Justice, Hon. Judge Robinson, Hon. F. B. T. Carter, D. W. Prowse. Head Master—Rev. Joseph F. Phelps. Second Master—T. Owain Jones.

Roman Catholic Board—Rt. Rev. Dr. Power, Joseph I. Little, Hon. Thomas Talbot, William P. Walsh, Maurice Fenelon. Masters—Very Rev. P. A. Slattery, Rev. William Fitzpatrick, and Messrs. Ward and Shortall.

General Protestant Board—Walter Grieve, Thomas McMurdo, Hon. P. G. Tessier, William Royd. Master—Adam Scott.

NEWFOUNDLAND WESLEYAN ACADEMY.

Directors—Rev. John S. Peach, Hon. J. J. Rogerson, Hon. Nicholas Stabb, C. R. Ayre, Hon. Stephen Rendell. Principal—Robert E. Holloway, B.A. Second Master—Emile Handcock. Third Master—J. W. Nichols.

HARBOR GRACE GRAMMAR SCHOOL.

Directors—John Munn, T. Harrison Ridley, Hugh W. Trappnell, John Ryan, D. Greene, Hon. W. J. S. Donnelly, Mark Parsons. Master—John I. Roddick.

CARBONEAR GRAMMAR SCHOOL.

Directors—Rev. W. J. Hoyles, W. Hawker and John Pearce, Church of England branch. Rt. Rev. Dr. Carfagnini, Rev. J. O'Connor and Richard McCarthy, Roman Catholic branch. Rev. James Dove, Israel L. McNeil, Benjamin T. H. Gould and Wm. Penny, Wesleyan branch.

COMMERCIAL SCHOOLS.

Brigus—Commissioners, Rev. R. H. Taylor, John C. Nuttall, Thomas Kelly, James Tarahan, John Wilcox, John Bartlett. Teacher—William Green.

Bay Roberts—Commissioners, Rev. W. C. Shears, the Wesleyan Minister for the time being, Dr. William Fraser, Isaac Bartlett, Charles Dawe. Teacher, Elias Mare.

Lower Island Cove—Commissioners, Rev. John S. Peach, John Lewis, Levi Garland, William Lacey. Teacher, Joseph Thistle.

Old Perlican—Commissioners, Rev. Thomas Fox, Stephen K. March. Teacher—William Christian.

Bonavista — Commissioners, Peter Ward, John Lawrence. Teacher—Samuel Rowsell.

Burin—Episcopal branch, Commissioner, James Norman; Jas. Bristow, Teacher; Roman Catholic, Michael O'Donnell, Teacher; Wesleyan, — Bird, Teacher.

Twillingate—Commissioners, Rev. John Reay, John W. Owen, Wm. Lethbridge, Jonathan Mitchell, J. B. Blanchford. Teacher John E. Duder.

Muddy Hole—Teacher, John Wheeler.

Seldom-come-By—Teacher, John Pike.

Bay-de-Verds—Teacher, Patrick Fox.

Harbor Grace—(River Head), Teacher, Michael Scully.

Harbor Main—Teacher, Cornelius Kennedy.

Bay Bulls—Teacher, Terrence Morrissey.

St. Mary's—Teacher, Patrick Walsh.

Great Placentia—Teacher, M. Kelley.

COLONIAL AND CONTINENTAL CHURCH SOCIETY.

[Incorporated 1862—Instituted originally as the Newfoundland School Society, 1823.]

Patron—Her Most Gracious Majesty the Queen. Vice-Patrons—His Grace the Archbishop of Canterbury, His Grace the Archbishop of York, His Grace the Archbishop of Armah. President—The Most Hon. the Marquis of Cholmondeley, and 72 Vice-Presidents, consisting of Peers of the United Kingdom, English and Colonial Bishops, Deans, Colonial Governors, (including the Governor of Newfoundland) Members of Parliament, &c., &c.

Corresponding Committee in Newfoundland—President, Hon. Frederick F. B. T. Carter; Vice-President, Robert J. Pinsent; Treasurer, E. L. Jarvis; Inspector, J. W. Marriott; Secretary, James Bayly; Hon. J. Winter, Hon. W. V. Whiteway, J. B. Wood, Theodore Clift, D. W. Prowse, J. L. Noonan, P. Emerson.

School Teachers—St. John's, (Central School) Mr. Currie, Boys; Miss Lundy, Girls; Training Pupil Teachers of the Society, Miss Prowse, Miss Blackler, Miss Wilmore, Miss Adams, Miss Cole, Miss Everett, Miss Martin, Miss Mercer, Miss Renouf, Miss Powsland; Infant' School, Miss Mills. Belloram, Miss Saunders. Petty Harbor, Mr. and Mrs. Bishop. Portugal Cove,

Mr. and Mrs. Talk. Brigus, Mr. and Mrs. Lawrence. Port-de-Grave, Mr. and Mrs. Maddock and Miss Andrews. Spaniard's Bay, Mr. and Mrs. Earle. Bishop's Cove, Miss Manderson. Harbor Grace, Mr. and Miss Ward. Heart's Content, Mr. Gardner. Trinity, Mr. Edwin Collis and Miss Lockyer. Bonavista, Mr. and Mrs. Lawrence. Salvage, Mr. Rowsell. Grenspond, Mr. and Mrs. H. Lind. Swains Island, Mr. Edward Bishop. Twillingate, ———. Fogo, Mrs. Plomer. Great St. Lawrence, Mr. Pitcher.

NEWFOUNDLAND WESLEYAN SCHOOL AND AGENCY SOCIETY.

Committee—President and Secretary of the Conference, Chairmen and Financial Secretaries of the Districts; Rev. G. S. Milligan, A.M., President and Treasurer; Rev. J. S. Peach, Secretary. Rev'ds. W. E. Shenstone, C. Ladner, J. Goodison, G. Forsey, J. Reay, C. Pickles, S. Matthews, S. Dunn, J. G. Currie, W. Swann, J. Embree, G. Boyd, G. H. Bryant; and Hon. E. White, Hon. Nicholas Stabb, Hon. Stephen Rendell, Hon. J. J. Rogerson, C. R. Ayre, John Steer, C. Duder, A. J. W. McNeily, J. Rorke, J. McNeil, J. Munn, John Bemister, James Saint, J. Manuel, J. Barlett, jr., J. Lewis, R. T. Gillingham, Edward Evans, John Evans, Daniel Bishop.

Executive Committee—The President of the Conference, the Secretary, the Financial Secretaries of the Districts, and the Rev. J. S. Peach, Secretary of the Committee; Hon. J. J. Rogerson, C. R. Ayre, John Steer, John Bemister, John Rorke.

Teachers—Carbonear, Richard Bransfield. Cupids, John C. Moors. Port-de-Grave, John A. Brown. Black Head, Matthew Hudson. Old Perlican, William Christian. Catalina, Mrs. Diamond. Flat Islands, John H. Parsons. Sound Islands, Chas. Downs. Green's Harbor, Simeon, Reed. Garia, Joseph Troke. Western Point, William Brock. Musgrave Town, Gideon Way.

PRESBYTERIAN (ST. ANDREW'S) SCHOOL, ST. JOHN'S.

Committee—John Boyd, Secretary; Gilbert Browning, Alexander M. McKay, Andrew Thompson. Teacher, R. Stott, M.A.

BOARDS UNDER EDUCATION ACT.

St. John's—Rev. G. M. Johnson, Rev. G. S. Milligan, A.M., Rev. Moses Harvey, Rev. Thomas M. Wood, William H. Mare, Hon. James S. Clift, Hon. John Winter, M.D., Hon. W. V. White-way, Q.C., Hon. James J. Rogerson, Dr. Crowdy, Rev. R. M. Johnson, Rev. Thomas Hall, Edwin Duder, Rev. E. Botwood.

Harbor Grace—Rev. Bertram Jones, Rev. Charles Ladner, Rev. Alexander Ross, T. Harrison Ridley, Rev. John M. Noel, James Hipsisley, William O. Wood.

Carbonear—Rev. James Dove, Rev. William J. Hoyles, and John Rorke, Edward Pike, James Forward, jr., Israel McNeil, and Benjamin Gould.

Bay Roberts—Rev. W. C. Shears, Rev. G. Boyd, Isaac Bartlett, Charles Dawe, Eli Dawe.

Port-de-Grave—Rev. James C. Harvey, Dr. Brown, J. M. Maddock, John Andrews, Thomas Batten, Rev. J. W. Boyd.

Brigus—Rev. W. E. Shenstone, Rev. Thomas Harris, Rev. Robert H. Taylor, and John Bartlett, John Smith, Abraham Bartlett, George Gushue, John Wilcox.

Bay-de-Verds—Rev. R. W. Freeman, Rev. J. S. Peach, John Lewis, William Lareey, Rev. G. S. Chamberlain, Henry Blundon, (Bay-de-Verds), George Perry.

Trinity Bay North—Rev. Benjamin Smith, and William Pittman, Alexander Bremner, jr., Gilbert H. Cole, Dr. Robert White.

Trinity Bay West—Rev. George Gardner, and Robert Ollerhead, James Moore, Robert Rockwood, Charles Randall, (Heart's Content), James Wiseman, (Heart's Delight), Reuben Bemister, (New Perlican), Joseph Hanrahan.

Trinity Bay South—Rev. Thomas Fox, James J. Mews, Levi March, Rev. G. S. Chamberlain, Henry Blundon, (Bay-de-Verds), James H. Watson, (Hants Harbor), W. H. Meadus, (Grates Cove), Benjamin Benson, jr.

Trinity Bay East—Rev. William Netten, Rev. John Pratt, and Alexander Bremner, William Norman, John Daymond, Arthur Tilley, and Benjamin Snelgrove.

Bonavista Bay North—John T. Oakley, George Skelton, M.D., Darius Blanford, Charles Edwards, Rev. Henry M. Skinner, Rev. J. G. Cragg, J. S. Lockyer, Henry Lind.

Bonavista Bay South—A. E. C. Bayly, Rev. John Goodison, and Jabez Saint, John G. Skelton, William Brown, Stephen Abbott, David Candow.

Bonavista Bay West—Rev. W. Kirby, Frederick Shears, Open Hall; Samuel Coffin, William Hancock, jr., and John Coffin.

Musgrave Town, Brooklyn, and Portland or James Cove—William Stares, John Hancock, Michael Stares, Gideon Way, Elias Brown, Caleb Reader, Israel Taylor.

Fogo—Rev. William Swan, Rev. Christopher Meek, Hay Findlater, Henry Simmons, James Rolls, jr., Henry Banks, Kenneth Carter, Robert Scott.

North West Arm of Green Bay to Cape John—Jacob Thomas, (Shoe Cove) Leander N. Gill, (Tilt Cove) George Prole, (Indian Burying Place) Charles Collins, Round Harbor.

Twillingate—Rev. F. R. Murray, Rev. John Reay, and John Peyton, William Lethbridge, Rev. Alfred Winsor, (Herring Neck) and William Hudder.

Moreton's Harbor—Rev. Walter Smith, Rev. Simeon Dunn, and Josiah Manuel, Exploits; Mark Osmond, William Osmond, John Taylor.

Ferryland—Rev. C. Ellingham, James Carter, John Morry, Peter Winsor, Daniel H. Winsor, William T. S. Carter.

Placentia—Rev. John Kingwell, James Butler, Thomas E. Collett, Thomas Collins, (Oderin) James Hollett, and James Chambers.

Burin—Rev. George Forsey, Rev. John Lockward, Francis

Berteau, Owen Pine, Richard Wille, George Goddard, and Richard Paul.

Lamaline—Rev. Josiah Darrel, James Pittman, George Butt, Thomas Lasky, Henry Haskell, Robert Bonnell, John Pittman, Benjamin Bonnell.

Grank Bank—Rev. Charles Pickels, Edward Evans, James Hickman, James P. Snook, Edward Bennett, James Lake.

Fortune Bay—Rev. W. K. White, Rev. E. Colley, Henry Camp, Conrad Fitzgerald, M.D., John Gaulton.

Burgeo—Rev. John Cunningham, Rev. Edward Colley, Geo. Hunt, M.D., Stephen Vatcher, William Anderson, and James P. LeGros.

LaPoile—Rev. Theophilus G. Netten, Rev. Solomon Matthews, Thomas Read, Philip Sorsoliel, Frederick Cox, William Stone, John Rolls.

Channel—Rev. T. A. Goode, John Gillham, William Bragg, Edward Gillham, Morgan Genge, Charles Sheaves, Charles E. Cossman.

Inspector of Protestant Schools—John Haddon.

ROMAN CATHOLIC SCHOOLS.

St. John's—Orphan Asylum, (Boys). Teachers, Edward St. George, Robert McKeown. Industrial Department—Bartholomew Connors.

St. Patrick's, River Head—Teacher, Thomas Foster.

Harbor Grace—St. Patrick's Free School, (Boys). Teacher, Patrick Fox.

BOARDS UNDER EDUCATION ACT.

St. John's—Rt. Rev. Dr. Power, Richard Howley, Hon. R. Kent, Hon. Edward Morris, Hon. E. D. Shea, John Casey and J. G. Conroy.

Harbor Grace, Carbonear, Bay-de-Verds and Trinity, South and West—Most Rev. Dr. Carfagnini, Hon. W. J. S. Donnelly, Patrick Devereux, Michael Bolger, Thomas Green, Daniel Green and James Bolger.

Brigus—Rt. Rev. Dr. Carfagnini, Rev. E. F. Walsh, James Tarahan, James Moore, Patrick Nowlan, Richard Delaney, sr., Patrick Brophy.

Harbor Main—Very Rev. Jeremiah O'Donnell, William Holden, Charles Fury, William Woodford, (Harbor Main), John Kennedy, sr., (Holy Rood), James Hearn, jr., (Colliers).

Trinity Bay North—Rev. William Veitch, and William Hartery, James Connors, Michael Murphy, John Ryan and John Murphy.

Fogo—Rev. James Brown, and J. Fitzgerald, Miles Burke, (Joe Bat's Arm) William Green, Daniel Bryan, (Tilton Harbor.)

Ferryland—Rev. M. A. Clancey, Rev. John Walsh, and Henry O'Neil, Philip Jackman, Nicholas Power, Richard Cashin, Gerald Jackman.

Bay Bulls—Very Rev. P. Cleary, Rev. Nicholas Roach, and Martin Williams, Michael Driscoll, J. Blackler, Michael Casey, (Witless Bay) and Thomas Gatherall, (Balline.)

Great Placentia—Rev. C. Irvine, Maurice Power, Thomas Rielly, John Sinnott, Francis Mooney, Samuel Collins.

Little Placentia—Rev. Robert Brennan, and Thomas Freeman, Alexander Burke, John Rielly and Thomas Keits.

Placentia West—Rev. Laurence Vereker, and Thomas Sullivan, Timothy Connors, Daniel Ryan, and Dennis Ryan.

St. Mary's—Rev. Richard O'Donnell, and J. Walsh, John Grace, William Burke, Michael Fagan, James Murphy, and John Whelan.

Trepassey—Rev. Thomas Hennebury, and James Waddleton, John Tobin, James Devereux, John Neil, jr., and John Hewitt.

Burin—Rev. Wm. Born, Richard Marshall, John Power, Matthew Marshall, Wm. Fitzpatrick, Rev. Wm. Doutney, and Thomas Gorman.

Fortune Bay—Rev. Dr. Howley, Rev. John Cullen, and P. Burke, W. Burke, P. Burke, jr., T. Kinsella, and T. Hearn.

Inspector of Roman Catholics Schools—Michael J. Kelly.

Ecclesiastical Department.

CHURCH OF ENGLAND.

DIOCESE OF NEWFOUNDLAND.

The Right Rev. EDWARD FIELD, D.D., Lord Bishop of Newfoundland.

The Right Rev. JAMES B. KELLEY, D.D., Coadjutor Bishop.

DEANERY OF AVALON.

Rural Dean—Rev. T. M. Wood.

Rev. G. M. Johnson, Cathedral.

Rev. J. S. Williams, Cathedral.

Rev. T. M. Wood, St. Thomas', St. John's.

Rev. A. C. F. Wood, M.A., St. Thomas', St. John's.

Rev. E. Botwood, St. Mary's.

Rev. R. M. Johnson, Pouch Cove.

Rev. R. T. Dobic, Petty Harbor.

Rev. Benjamin Fleet, Foxtrap.

Rev. George Hutchinson, B.A., Topsail.

Rev. William Pilot, Vuidi Vidi.

Rev. Cornelius Ellingham, Aquaforte.

DEANERY OF CONCEPTION BAY.

Rural Dean—Rev. James C. Harvey.

Rev. Bertram Jones, Harbor Grace.

Rev. John Godden, Harbor Grace and Bryants Cove.

Rev. William J. Hoyles, Carbonear.

Rev. J. C. Harvey, Port-de-Grave.

Rev. Robert H. Taylor, Brigus.
 Rev. W. C. Shears, Bay Roberts.
 Rev. J. M. Noel, Upper Island Cove.
 Rev. G. S. Chamberlain, Bay-de-Verds.

DEANERY OF TRINITY BAY.

Rural Dean—Rev. B. Smith.

Rev. B. Smith Trinity.
 Rev. Henry Petley, M.A., New Harbor.
 Rev. George Gardner, Heart's Content.
 Rev. William Netten, Catalina.

DEANERY OF BONAVISTA BAY.

Rural Dean—Rev. A. E. C. Bayly.

Rev. A. E. C. Bayly, Bonavista.
 Rev. William Kirby, King's Cove.
 Rev. H. M. Skinner, Salvage.
 Rev. John G. Cragg, Greenspond.

DEANERY OF NOTRE DAME.

Rural Dean—Rev. Frederick R. Murray.

Rev. Frederick R. Murray, Twillingate.
 Rev. Alfred Winsor, Herring Neck.
 Rev. Christopher Meek, Fogo.
 Rev. Robert Temple, White Bay.
 Rev. Walter Smith, Tilt Cove.

DEANERY OF PLACENTIA BAY.

Rural Dean— — — — —.

Rev. J. Kingwell, Harbor Buffett.
 Rev. J. Lockward, Burin.
 Rev. Josiah Darrel, Lamaline.

DEANERY OF FORTUNE BAY.

Rural Dean—Rev. W. K. White.

Rev. W. K. White, Harbor Briton.
 Rev. E. Colley, Hermitage Cove.
 Rev. J. Cunningham, Burgeo.
 Rev. Theophilus G. Netten, LaPoile.
 Rev. Alfred C. Warren, St. George's Bay.
 Rev. Joseph J. Curling, Bay of Islands.
 Rev. John Bishop, Belloram.
 Rev. T. A. Goode, Channel.
 Rev. S. M. Wren, Bonne Bay.

LBRADOR.

Rev. George Bishop, Battle Harbor.

RETIRED CLERGYMAN.

Rev. Thomas Boone, late Rural Dean, Notre Dame Bay.

THEOLOGICAL INSTITUTION.

Visitor—The Lord Bishop.

Principal— — — — —.

Vice-Principal—Rev. William Pilot.

Students—Thomas P. Massiah, Frederick Skinner, Charles Jeffries, John Hewitt, Algernon C. Clarke, F. J. J. Smith.

NEWFOUNDLAND CHURCH SOCIETY.

Patron—His Excellency the Governor.

President—The Rev. the Lord Bishop.

Vice-Presidents—The Revds. the Deans.

Treasurer—William H. Mare.

Secretary—Rev. G. M. Johnson.

Committee—J. C. Withers, Hon. W. V. Whiteway, Q.C., E. Duder, Hon. F. B. T. Carter, Q.C., C. Crowdy, M.D., H. LeMessurier, Joseph Crowdy, Hon. J. S. Clift, Thomas Clift, A. O. Hayward, Hon. Judge Robinson, Hon. A. W. Harvey, G. J. Hayward.

DIOCESAN SYNOD OF NEWFOUNDLAND.

Executive Committee—The Right Rev. the Bishop of the Diocese, the Right Rev. the Coadjutor Bishop, Rev. A. C. F. Wood, Rev. G. M. Johnson, Rev. E. Botwood, Rev. J. F. Phelps, Hon. Judge Robinson, R. J. Pinsent, Q.C., P. Emerson, Q.C., Hon. A. W. Harvey, G. T. Rendell.

ROMAN CATHOLIC CHURCH.

Bishop—Right Rev. Dr. THOMAS JOSEPH POWER.

Vicar General—Very Rev. THOMAS O'CONNOR, P.P.

Dean—Very Rev. PATRICK CLEARY, P.P.

St. John's—Cathedral—Very Rev. T. B. McGrath, Adm., Rev. Wm. Forristal, Rev. Patrick Delaney.

St. Bonaventure College—President, Very Rev. P. A. Slattery; Dean, Rev. Wm. Fitzpatrick.

St. Peter's Chapel, Queen's Street—Rev. John Scott.

St. Patrick's, River Head—Rev. John Ryan.

Petty Harbor—Rev. John Walsh.

Portugal Cove and Torbay—Very Rev. T. O'Connor, P.P., V.G., Rev. M. J. Clarke.

Willess Bay and Bay Bulls—Very Rev. Dean Cleary, P.P., Rev. N. Roach, Rev. M. O'Driscoll.

Ferryland and Cape Broyle—Rev. M. A. Clancey.

Fermeuse and Renewes—Rev. John Walsh.

Trepassey—Rev. Thomas Hennebury, P.P.

St. Mary's and Salmonier—Rev. Richard O'Donnell, P.P., Rev. John St. John.

Great Placentia—Rev. Charles Irvine, Rev. James Whelan.

Little Placentia—Rev. R. Brennan, Rev. M. MacCullow,

St. Kyran's—Rev. L. Vereker.

Burin—Rev. Wm. Born, P.P.

Oderin—Rev. M. Morris.

St. Lawrence—Rev. Wm. Doutney.

Lamaline— — — — —.

Harbor Briton—Dr. Howley, P.P.

St. Jacques—Rev. Vincent Reardon.

PREFECTURE APOSTOLIC.

St. George's Bay—Prefect Apostolic, Very Rev. T. Sears.

CONVENTS.

St. John's—Presentation Convent, Military Road; Mercy Convent, Military Road; Presentation Convent, Patrick's Street; Mercy Convent, Belvidere.

Torbay—Presentation Convent.

Witless Bay—Presentation Convent.

Burin—Mercy Convent.

Ferryland—Presentation Convent.

Fermeuse—Presentation Convent.

St. Lawrence—Mercy Convent.

Great Placentia—Presentation Convent.

St. Mary's—Presentation Convent.

Harbor Briton—Presentation Convent.

An Orphanage for girls, at Belvidere; Orphan Asylum School, Cathedral Hill.

DIOCESE OF HARBOR GRACE.

The Right Rev. HENRY CARFAGNINI, D.D., O.S.F., Lord Bishop of Harbor Grace,

Very Rev. Jeremiah O'Donnell, Vicar General of the Diocese.

Harbor Grace—Very Rev. D. Falconio, Administrator, Rev. Wm. Donnelly.

Carbonear—Rev. Wm. Veitch.

Brigus—Rev. E. F. Walsh, P.P.

Harbor Main—Very Rev. J. O'Donnell, P.P., Rev. P. O'Donnell, C.C.

Northern Bay—Rev. J. Cummins.

Bonavista—Rev. J. Carolan.

King's Cove—Rev. M. Hanley.

Tilton Harbor—Rev. James Brown, P.P.

Fortune Harbor—Attended from Tilton Harbor.

La Couche—Attended from Tilton Harbor.

Labrador—Attended once a year by a Priest from Harbor Grace.

Convents—3 of the Presentation Order, and 2 of the Order of Mercy.

WESLEYAN METHODIST CHURCH.

Rev. GEORGE S. MILLIGAN, M.A., President of Conference.

Rev. THOMAS HARRIS, Secretary.

ST. JOHN'S DISTRICT.

Rev. GEORGE S. MILLIGAN, M.A., Chairman.

Rev. JOSEPH PASCOE, Financial Secretary.

St. John's—Rev. George S. Milligan, M.A., Rev. Joseph Pascoe,
Rev. George J. Bond, B.A., Rev. Joseph Lister.

Bonavista—Rev. John Goodison.

Twillingate—Rev. John Reay.

Burin—Rev. George Forsey.

Grand Bank and Fortune—Rev. C. Pickles and Rev. C. Myers.

Petites—Rev. Solomon Matthews.

Channel—Rev. James Nurse.

Exploits—Rev. Simeon Dunn.

Greenspond—Rev. Jeremiah Embree.

HOME MISSIONS.

Musgrave Town—Rev. William B. Seecombe.

Musgrave Harbor—Rev. Henry Lewis.

Fogo—Rev. William Swan.

Change Islands—Rev. E. Taylor.

Moreton's Harbor—Rev. William J. Jennings.

Little Bay Island—Rev. James Pincock.

Tilt Cove—Rev. Samuel Snowden.

St. Anthony—Rev. Alexander McGregor.

Flower Cove—Rev. John B. Bowell.

Bonne Bay—Rev. Jabez Hill.

Bay of Islands—Rev. Patrick Robinson.

St. Pierre—Rev. Joseph Parkins.

Fortune Bay—Rev. Charles Myers, during summer months.

Flat Island—Rev. Thomas H. Janes.

Sound Island—Rev. Henry C. Hatcher.

CARBONEAR DISTRICT.

Rev. THOMAS HARRIS, Chairman.

Rev. JAMES DOVE, Financial Secretary.

Carbonear—Rev. James Dove, Rev. John G. Currie.

Harbor Grace—Rev. Charles Ladner.

Brigus—Rev. Thomas Harris, Rev. James B. Heald, Rev. W. E.
Shenstone, Sup'y.

Bay Roberts—Rev. George Boyd.

Blackhead—Rev. John S. Peach, Rev. George Payne.

Island Cove—Rev. Robert W. Freeman.

Old Perlican—Rev. Thomas Fox.
 Hants Harbor—Rev. Anthony Hill.
 Catalina—Rev. John Prat.

ROME MISSIONS.

Port-de-Grave—Rev. Jesse Hayfield.
 Trinity—Rev. John Dixon.
 Shoal Harbor—Rev. Thomas W. Atkinson, Rev. James Alexander.
 Green's Harbor—George H. Bryant.
 Labrador—Rev. J. G. Currie, during the summer months.

CHURCH OF SCOTLAND.

The Rev. James Paterson, St. Andrews Church, St. John's.

CONGREGATIONAL CHURCH.

The Rev. Thomas Hall, Queen's Road Chapel, St. John's.
 The Rev. George Harrington, Rendell Harbor, Smith's Sound, Trinity Bay.

FREE PRESBYTERIAN CHURCH.

The Rev. Moses Harvey, St. John's.
 The Rev. Alexander Ross, Harbor Grace.

LAYMEN LICENSED TO CELEBRATE MARRIAGE.

Charles Harris, Gooseberry Island.
 George Goodridge, Labrador.

St. John's and Newfoundland Auxiliary Bible Society.

His Excellency the Governor, Patron. Hon. Nicholas Stabb, President. Hon. S. Rendell, Hon. John Winter, Hon. P. G. Tessier, William Boyd, J. Goodfellow, Hon. J. J. Rogerson, Vice-Presidents. Robert Brown, Treasurer. Rev. M. Harvey, John McDougall, Secretaries. Committee—Rev. Thomas Hall, Rev. G. S. Milligan, M.A., Rev. J. Pascoe, Rev. J. Paterson, Hon. R. Thorburn, Hon. Edward White, James Bayly, Ed. L. Jarvis, C. R. Ayre, Sames Seaton, John Woods, Richard Neyle, Allan Goodridge, David Selater, G. Browning, James Baird, David Watson, T. W. Stabb, James Howe, J. N. Finlay, L. T. Chancey, John Steer, John McCauley, J. F. Chisholm.

Chamber of Commerce, St. John's.

C. Bowring, President. E. Duder and R. Alexander, Vice-Presidents. J. Goodfellow, Secretary and Treasurer. Hon. R. Thorburn, Hon. A. W. Harvey, Hon. P. G. Tessier, Hon. S. Rendell, T. W. Stabb, W. B. Grieve, R. H. Prowse, T. R. Smith, W. H. Mare.

Manager of Commercial Rooms—John Goodridge.

Banks.

UNION BANK OF NEWFOUNDLAND.

Directors—Robert Alexander, Hon. R. Thorburn, Hon. A. W. Harvey, John Munn, Walter B. Grieve.

John W. Smith, Manager. Randal Greene, Accountant.—Charles S. Pinsent, Teller. Prescott N. Bully, and William H. Crowdy, Clerks. Hon. R. J. Pinsent, Q.C., Standing Counsel and Solicitor.

Discount Days—Mondays and Thursdays, from 12½ o'clock.

Hours of Business—From 10 a.m., to 3 p.m.

COMMERCIAL BANK OF NEWFOUNDLAND.

Directors—Hon. Stephen Rendell, Charles Bowring, James Goodridge, Edwin Duder, Hon. J. Winter.

Robert Brown, Manager. Henry Cooke, Accountant and Teller. John W. Hayward, William B. Dryer, and Henry D. Carter, Clerks. Hon. F. B. T. Carter, Q.C., Standing Counsel and Solicitor.

Discount Days—Tuesdays and Fridays, from 12½ to 1½ o'clock.

Hours of Business—From 10 a.m., to 3 p.m.

Foreign Consulates.

Portugal—Charles Fox Bennett, Consul-General for Newfoundland. Vice-Consul—Thomas R. Smith, St John's; John Munn, Harbor Grace; William Jnott, Burin; E. C. Gallop, Harbor Breton and Gaultois; Gilbert Humphery Cole, Trinity; Philip John Grouchy, LaPoile; Charles Middleton, Burgeo; George Messervy, Jersey Harbor; Thomas De Bourcier, Little Harbor.

Spain—Don Jose Fronscky, Vice-Consul, St. John's; T. Harrison Ridley, Harbor Grace. Consular Agents—John E. Duder, Twillingate; ———, Greenspond; Dr. Hay Findlater, Fogo; Gilbert Humphery Cole, Trinity; Philip Sorsoliel, Rose Blanche; Philip Hubert, Harbor Breton; Henry F. Holman, Caultois; Francis Berteau, Burin.

German Empire—Robert H. Prowse, Consul, St. John's.

France—J. C. Toussaint, Vice-Consul for Newfoundland.

Italy—James Bayly, Consular Agent for Newfoundland.

United States of America—Thomas N. Molloy, Consul for Newfoundland. Consular Agent, Harbor Grace, P. Deyereux.

Sweden and Norway—Robert H. Prowse, Vice-Consul for Newfoundland.

Naval.

Commander-in-Chief on the West India and North American Station—Vice-Admiral Edward Gennys Fanshawe, C.B.

Newspapers Published in the Colony.

Courier—Published every Wednesday and Saturday morning.

Commercial Journal—Published every fortnight, immediately previous to the closing of the Mail per Halifax steamer.

Express—Published every Tuesday, Thursday and Saturday morning.

Morning Chronicle—Published every morning, Sundays excepted.

Newfoundlander—Published every Tuesday and Friday morning.

North Star—Published every Saturday morning.

Patriot—Published every Monday afternoon.

Royal Gazette—Published every Tuesday.

Semi-Weekly Chronicle—Published every Tuesday and Friday morning.

Standard (Harbor Grace)—Published every Saturday morning.

Star (Harbor Grace)—Published every Thursday morning.

Times—Published every Wednesday and Saturday morning.

Telegraph—Published every Wednesday morning.

Temperance Journal—Published on the 1st and 15th of every month.

St. John's Athenæum.

Hon. R. Kent, President. Rev. M. Harvey and James Baird, Vice-Presidents. Alexander Taylor, Secretary. Committee—William Boyd, James Fox, Thomas McConnan, C. T. Ryland, William Killebrew, William Kitchin, William Pitts, A. J. W. McNeily, W. D. Hally, James S. Winter and David Selater.

C. Barnes, Librarian and Superintendent of Rooms.

St. Joseph's Catholic Institute.

Established 26th May, 1872, on the amalgamation of the Catholic Institute and St. Joseph's Association. Patron—The Most Rev. Thomas J. Power, Bishop of St. John's. Spiritual Director, Rev. William Forristal. Robert J. Kent, President. W. P. Walsh, Vice-President. Richard Raftus, 1st Assistant Vice-President. William Donnelly, 2nd Assistant Vice-President. John Fitzgerald, Treasurer. William J. Hogan, Secretary. Edward St. George, Librarian. Council—Wm. Doughty, James J. F. Parker, John Howlett, Edmond Fitzgibbon, John J. Coleman, John O'Flaherty, Thomas Greene, William Comerford.

Wesleyan Academic Literary Institute.

President, H. J. B. Woods. 1st Vice-President, J. A. Whiteford. 2nd Vice-President, G. W. News. Secretary, S. R. March. Treasurer, C. Campbell. Librarian, John Curran. Committee, J. E. P. Peters, J. W. Nichols and R. Blackwood.

Harbor Grace Literary Institute.

Hon. W. J. S. Donnelly, President. L. W. Emerson, and R. S. Munn, Vice-Presidents. J. Bemister, Treasurer. C. Watts, Secretary. Committee, W. H. Thompson, James Hippisley and E. W. Quinton.

Masonic.

[Under the jurisdiction of the Grand Lodge of England.]

Hon. J. S. Clift, District Grand Master; W. V. Whiteway, Deputy D. G. Master; ———, D. G. Senior Warden; J. F. Chisholm, D. G. Junior Warden; ———, D. G. Chaplain; C. S. Pinsent, D. G. Treasurer; H. T. B. Wood, D. G. Secretary; R. T. Rankin, D. G. Senior Deacon; J. S. Hayward, D. G. Junior Deacon; M. Monroe, D. G. Master of Ceremonies; A. J. W. McNilly, D. G. Organist; G. G. Geddes, D. G. Pursuivant; W. Smith, D. G. Tyler.

The District Grand Lodge holds quarterly communications.

St. John's Lodge, No. 579—A. Pearce, W.M.; R. Laurie, S.W.; W. Irving, J.W.; H. Cooke, Treasurer; H. T. B. Wood, Secretary; J. Rodger, S.D.; J. Hill, J.D.; G. Garland and E. M. Archibald, Stewards; J. Smith, I.G.; W. Smith, Tyler.

Meetings on the first Friday in every month, at Masonic Hall, British Square.

Avalon Lodge, No. 776, R.E.—James L. Duchemin, W.M.; W. Langston, S.W.; John H. Ebsary, J.W.; Joseph Wilson, Secretary; Thomas Withycombe, Treasurer; John Crossman, S.D.; Walter Williams, J.D.; William Winsborrow and Charles Lewis, Stewards; Edward White, I.G.; William Smith, Tyler.

Meetings on the second Thursday in every month, at the Masonic Hall, British Square.

Hiram Lodge, Burin, No. 1281—George Bishop, W.M.; John Ware, S.W.; George Goddard, J.W.; Philip Pine, Secretary; John Paul, Treasurer; Daniel Bishop, S.D.; Wm. Pine, J.D.; George Collins and Gabriel Goddard, Stewards; Wm. Collins, I.G.; Joseph Dibbin, Tyler.

Victoria Lodge, Fortune, Fortune Bay, No. 1373—William P. Lake, W.M.; George Tuck, S.W.; John E. Lake, J.W.; Eli Tuck, S.D.; John Ahier, J.D.; Henry J. Haddon, Secretary; Charles Bennett, Treasurer; John Dixon, I.G.; Robert Snook, O.G.; James M. Lake, Chaplain; Charles Hillier and William Tuck, Stewards.

[Under the jurisdiction of the Supreme R. A. Chapter of England.]

St. John's R. A. Chapter—J. S. Clift, P.P.Z.; N. S. Stabb, P.Z.; J. F. Chisholm, P.H.; M. Monroe, P.J.; C. S. Pinsent, S.E.; J. S. Hayward, S.N.; G. G. Geddes, P.S.; A. J. W. McNilly, S.S.; W. R. Stirling, J.S.; H. J. Stabb, Treasurer; William Smith, Janitor.

[Under the jurisdiction of the Grand Lodge of Scotland.]

Alexander M. McKay, P.G.M.; T. H. Ridley, S.G.M.; J. N. Finlay, S.G.W.; W. M. Warren, J.G.W.; Alexander Graham, G.T.; Prescott Emerson, G.S.; William P. Mann, G.C.; Rev. Moses Harvey, G.C.; E. L. Moore, S.G.D.; W. D. Morrison, J. G.D.; John Carnell, G.S.; A. Martin, G.M.; W. Cooke, G.I.G.; William Smith, G.T.

The Provincial Grand Lodge holds quarterly communications.

Tasker Lodge, No. 454 R.S.—Edward Rothwell, R.W.M.; R. J. Pinsent, W.S.W.; Wm. S. Canning, W.J.W.; John R. Hughes, Treasurer; John W. Collier, Secretary; Rev. Moses Harvey, Chaplain; R. A. McCoubrey, S.D.; James Jardine, J.D.; A. Rankin and John Farquar, Stewards; Robert Mellis, I.G.; Wm. Smith, Tyler.

Meeting on the third Thursday in every month, at Masonic Hall, British Square.

Harbor Grace Lodge, No. 475—W. P. Mann, R.W.M.; James Huppisley, S.W.; Selby G. Allen, J.W.; John Paterson, Treasurer; F. M. Cairns, Secretary; Joseph Russell, S.D.; Daniel Fletcher, J.D.; Rev. C. Ladner, Chaplain; Stephen Andrews, Bible Bearer; Robert MacRae and E. W. Lynds, Stewards; H. Hiscock, I.G.; Fitz Grim, Tyler.

Medical Society, St. John's.

T. Howley, L.R.C.S.I., &c., President and Secretary; C. H. Renouf, M.R.C.S.E., Treasurer; Henry H. Stabb, M.D., Frederick Bunting, M.D., Charles Crowdy, M.R.C.S.I., &c., Wm. C. Simms, M.D., &c., Henry Shea, L.R.C.S.I., &c.

Newfoundland Tariff,

According to Revenue Act, passed 28th March, 1874.

Horses, Mares, &c., each.....	\$2.30
Pigs and Calves.....	0.23
Oxen and Cows, the \$100.....	5.00
Ale, Porter, Cider and Perry, the gallon.....	0.10
Apples, the barrel.....	0.30
Bacon, Hams, Tongues, Smoked Beef, and sausages, the cwt.....	2.00
Beef and Pigs' Heads, salted and cured, the barrel of 200 lbs.....	0.60
Biscuit or Bread, the cwt.....	0.07
Butter, the cwt.....	1.12
Cheese, the cwt.....	1.50
Chocolate and Cocoa, the lb.....	0.04
Cigars, 5 per cent. <i>ad valorem</i> , and the M.....	2.64
Coffee, the lb.....	0.03
Coal, imported or brought into the port of St. John's, the ton.....	0.25
Confectionary, the cwt.....	3.50
Feathers and Feather Beds, the lb.....	0.05

Fish—salted, dried and pickled, the cwt.....	1.32
Flour, the barrel.....	0.20
Fruit—dried, the lb.....	0.04
“ Other descriptions, (except Apples) the \$100.....	5.00
Lumber, the M.....	1.00
Molasses, the gallon.....	0.03
Oatmeal the barrel.....	0.20
Indian Meal and Pease, the barrel.....	0.15
Pork, the barrel of 200 lbs.....	1.00
Salt, the ton.....	0.20
Shingles, the M.....	0.40
Shooks and Staves (manufactured and dressed) the \$100.....	20.00
Spirits, viz:—Brandy or other Spirits, not herein defined or enumerated, and not exceeding the strength of proof by Sykes's Hydrometer and so in proportion for any greater strength than the strength of proof, the gallon....	1.00
All other Spirits, of greater strength than forty-three over proof, shall be deemed to be undefined Spirits, and subject to duty accordingly	
Rum, not exceeding the strength of proof by Sykes's Hydrometer, and so in proportion for any greater strength than the strength of proof, the gallon.....	1.00
Gin, not exceeding the strength of proof by Sykes's Hydrometer, and so in proportion for any greater strength than the strength of proof, the gallon.....	1.20
Whiskey, not exceeding the strength of proof by Sykes's Hydrometer, and so in proportion for any greater strength than the strength of proof, the gallon.....	1.50
Cordials, Shrub and other Spirits, being sweetened or mixed, so that the degree of strength cannot be ascertained as aforesaid, the gallon	0.80
Sugar—Loaf and refined, the cwt.....	3.50
“ Unrefined, the cwt.....	2.00
“ Bastard, the cwt.....	2.50
Tea—Souchong, Congon and Bohea, the lb....	0.05
“ All other sorts, the lb.....	0.12
Tobacco—Manufactured, the lb	0.12
“ Leaf, the lb.....	0.07
“ Stems, the cwt	0.50
Timber, the ton.....	0.50
Vinegar, the gallon.....	0.10
Wines, viz:—Champagne, the gallon.....	2.00
Port and Madeira, the gallon.....	1.50
Sherry and Manzanilla, 12 per cent. <i>ad valorem</i> , and the gallon	0.50

N.
n,
y.
J.
i.;
is.
J.
es,
ey,
A.
m.
nic
nes
ea-
niel
ws,
H.
H.
der-
C.
2.30
0.23
5.00
0.10
0.30
2.00
0.60
0.07
1.12
1.50
0.04
2.64
0.03
0.25
3.50
0.05

Spanish Red, Denia, Sicilian, Figueira, Red Lisbon, Common, Cape and Malaga, the gallon	0.70
Claret, the gallon.....	0.40
Hock, Burgundy and Light Rhenish Wine, the gallon	0.50
All other Wines, 12½ per cent. <i>ad valorem</i> , and the gallon	0.80
Ready-made Clothes, viz. :—Coats, Jackets, Trowsers, Waistcoats and Southwesters, the \$100	20.00
Stockings, Shirts and Drawers, (made by hand and not woven) the \$100... ..	20.00
Mantles, Dresses, Cloaks, Sacks, the \$100.....	20.00
Candles, the \$100.....	20.00
Manufactures of Wood, (except Cabinet Wares, Musical Instruments, and Agricultural Implements) the \$100.....	20.00
Empty Casks of all kinds, not containing Merchandize—including FishBoxes and returned Casks, the \$100.....	20.00
Packages in which Dry Goods are imported, \$100	13.00
Fresh Meat and Poultry, the \$100	5.00
Anchors and Chain Cables, Coper and Composition Metal for Ships, viz. :—Bar, Bolt and Sheathing; Nails; Iron, viz. :—Bar, Bolt, Sheathing and Sheet; Wrought Nails; Cordage and Hemp Cables; Oakum; Canvas; Corks and Corkwood; Pitch, Tar, Resin, Raw Turpentine; Fishing Tackle, Masts and Spars; Sheet Tin and Solder; Machinery and parts of Machinery, imported for the use of Foundries, Factories, Mills, or other purposes; Staves, undressed; Oats, Rice, Indian Corn, Bran, Barley, Medicines, the \$100	8.00
Goods, Wares and Merchandize, not otherwise enumerated, described or charged with duty in this Act, and not otherwise exempt, the \$100.....	13.00

LOCAL DISTILLATION.

Brandy, not exceeding the strength of proof by Sykes's Hydrometer, and so in proportion for any greater strength than the strength of proof, the gallon.....	1.20
Gin, not exceeding the strength of proof by Sykes's Hydrometer, and so in proportion for any greater strength than the strength of proof, the gallon.....	1.00
Whiskey, not exceeding the strength of proof by Sykes's Hydrometer, and so in proportion for any greater strength than the strength of proof, the gallon.....	1.00
Rum, not exceeding the strength of proof by	

Sykes's Hydrometer, and so in proportion for any greater strength than the strength of proof, the gallon..... 0.75

TABLE OF EXEMPTIONS.

Printing Presses, Printing Paper, (Royal and Demy), Printing Types and all other Printing Materials
 Printed Books and Pamphlets, Maps and Charts
 Coin and Bullion, Hemp, Flax, Tow
 Fresh Fish, Bait
 Wheat, Eggs
 Plants, Trees, Shrubs
 Unmanufactured Wool and Raw Cotton
 Specimens illustrative of Natural History
 Works of Art—viz., Engravings, Paintings and Statuary, not intended for sale
 Articles imported for Religious purposes, and not intended for sale
 Manure of all kinds
 Agricultural Implements and Machinery imported by Agricultural Societies, for the promotion of Agriculture
 Arms, Cloth and Provisions for Her Majesty's Land and Sea Forces
 Passengers' Baggage, Household Furniture, and Working Tools and Implements, used and in the use of persons arriving in the Island
 Refuse Rice, Seeds for Agricultural purposes
 Vegetables of all sorts
 Hides and pieces of Hides, not tanned, curried or dressed
 Coals, (when not imported or brought into the Port of St. John's)
 Articles of every description imported for the use of the Governor
 Donations of Clothing specially imported for distribution gratuitously by any Charitable Society
 Cotton Yarn
 Pig Iron, Coke
 Bark for Tanning Leather
 Sulphuric Acid when used for the manufacture of Manure
 Twines, to be used in manufacturing Nets in this Colony
 Dye Stuffs
 Junk, Old Iron, Old Copper and Composition-metal
 Articles for the official use of Foreign Consuls
 Steam Engines, Boilers, Propellers, Water-wheels, and Saws when used in the original construction of Steam Boats built in this Island, Mills or Factories, also crushing Mills for mining purposes
 Philosophical Instruments and apparatus, including Globes, when imported and for the use of Colleges and Schools, Scientific or Literary Societies
 Materials for sheathing the bottoms of Vessels, such as Zinc, Copper, and Composition-metal together with nails, Paper or Felt, which may be used under the same

0.70
 0.40
 0.50
 0.80
 20.00
 20.00
 20.00
 20.00
 20.00
 20.00
 13.00
 5.00
 8.00
 3.00
 1.20
 1.00
 1.00

Live Sheep, Sand, Wollen Yarn, and Corn for the manufacture of Brooms

It shall not be lawful for any Importer of dried Fish to Warehouse the same in any of the Ports of this Colony or its Dependencies, without the payment of the duty hereinbefore imposed; and the provisions of any Act of this Colony with regard to the Warehousing of Goods on the first entry thereof, or to the allowance of drawbacks upon exportation, shall not in either case apply to or be construed to apply to such fish: Provided, that the section shall not apply to such fish of British catch and cure, unless otherwise declared by Proclamation of the Governor, published in the *Royal Gazette*.

All Yachts sailing under Warrant of the Lords of the Admiralty, or belonging to the Royal Yacht Club, shall be exempted on view of the said Warrant, from payment of all local Duties whatsoever.

Appendix.

The following notifications and appointments have been made since the foregoing sheets went to press:

Members returned to serve in the General Assembly of Newfoundland:

District of St. John's West—Lewis Tessier, Maurice Fenelon and Patrick J. Scott, Esquires.

District of St. John's East—Robert J. Kent, Robert J. Parsons and John J. Dearin, Esquires.

District of Conception Bay, Southern Division—Joseph I. Little and Patrick Nowlan, Esquires.

District of Port-de-Grace—Nathaniel Rabbitts, Esquire.

District of Carbonear—John Rorke, Esquire.

District of Bay-de-Verde—Hon. James J. Rogerson.

District of Ferryland—Richard Raftus and James Gerve Conroy, Esquires.

District of Placentia and St. Mary's—O. F. Bennett, James Collins and Michael E. Dwyer, Esquires.

District of Harbor Grace—Hon. Ambrose Shea and Joseph Godden, Esquire.

District of Trinity—Hon. W. V. Whiteway, John Steer and James H. Watson, Esquires.

District of Bonavista—John H. Warren, Charles Bowring and A. J. W. McNally, Esquires.

District of Burin—Charles R. Ayre and James S. Winter, Esquires.

District of Fortune Bay—Robert Alexander, Esquire.

District of Burgeo and LaPolle—Prescott Emerson, Esquire.

District of Twillingate and Fogo—Hon. F. E. T. Carter, Charles Duder and William Kelligrew, Esquires.

John M. Maddock, J.P., John Andrews, William Brown, M.D., Patrick Kenny, Isaac Richards, Thomas Batten, James Butler, George F. Payne, and George H. Bussey, to be a Board of Road Commissioners for Port-de-Grave, Conception Bay.

William Brown, Michael Brennan, and John Pearson, to be a Board of Road Commissioners for Paradise, in the District of Placentia and St. Mary's.

George T. R. Snellgrove, to be Sub-Collector for English Harbor, St. Jacques, and Belloram.

Wm. K. LePrew, R. Pitman, A. Smith, and Capt. Wm. Whelan, to be Commissioners for the erection of a Public Wharf at Capids.

Moses Tilley, Random, and Thomas Hodge, Fogo, to be Justices of the Peace for the Northern District.

John Casey, to be Stipendiary Commissioner of the Poor.

James Inkpen and Samuel Darby to be Commissioners for the erection of a Breakwater at Burin.

Dr. H. Fiedlater, James Fitzgerald, Robert Scott, Thomas Duder and Thomas Hodge, to be a Board of Road Commissioners for Fogo.

Rev. Alfred Winsor, Richard Philipots, Esau Blandford, Henry Miles, John Squires, Thomas Dally and William Richmond, to be a Board of Road Commissioners for Herring Neck.

Edward Rowe, Henry Penny, Patrick Foley, Jacob Rowe, and William Penny, to be a Board of Road Commissioners for Seldom-Come-By.

